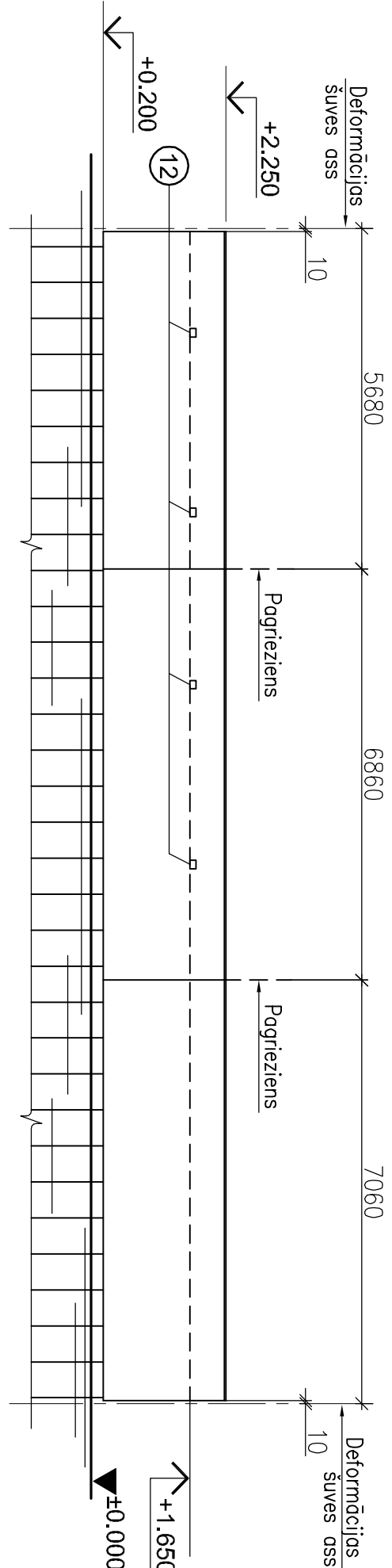


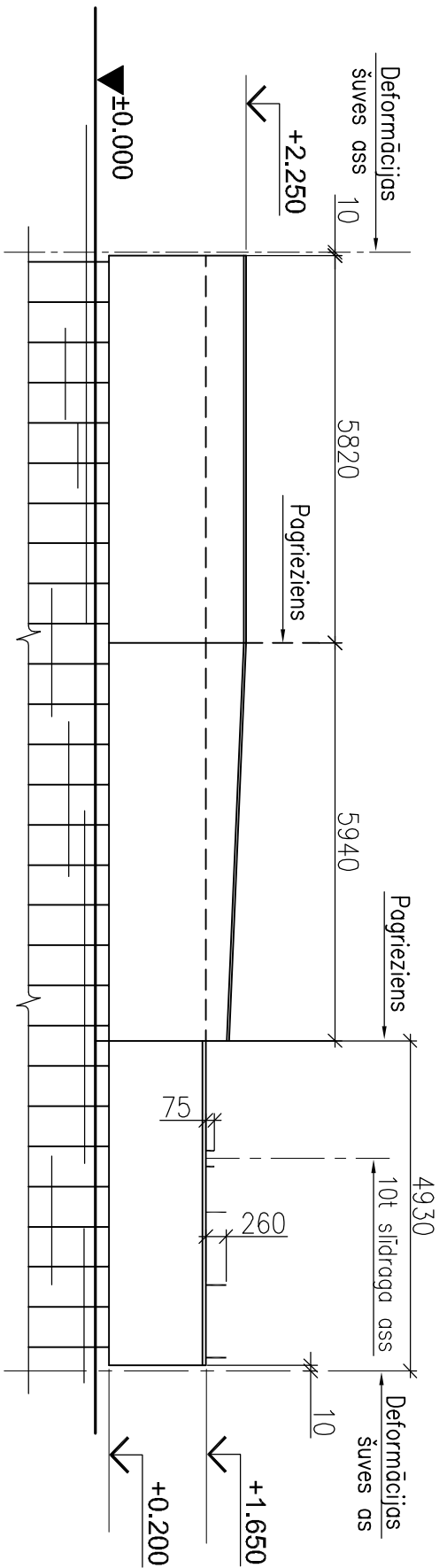
Virsbūves Vm - 2 fasāde

M 1:100



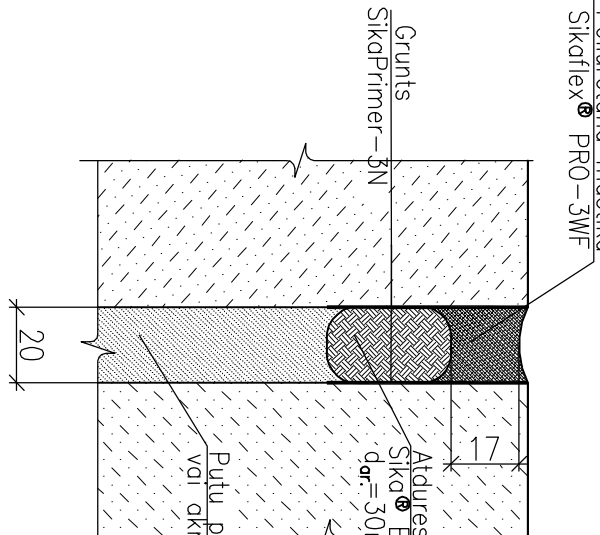
Virsbūves Vm-3 fasāde

M 1:100



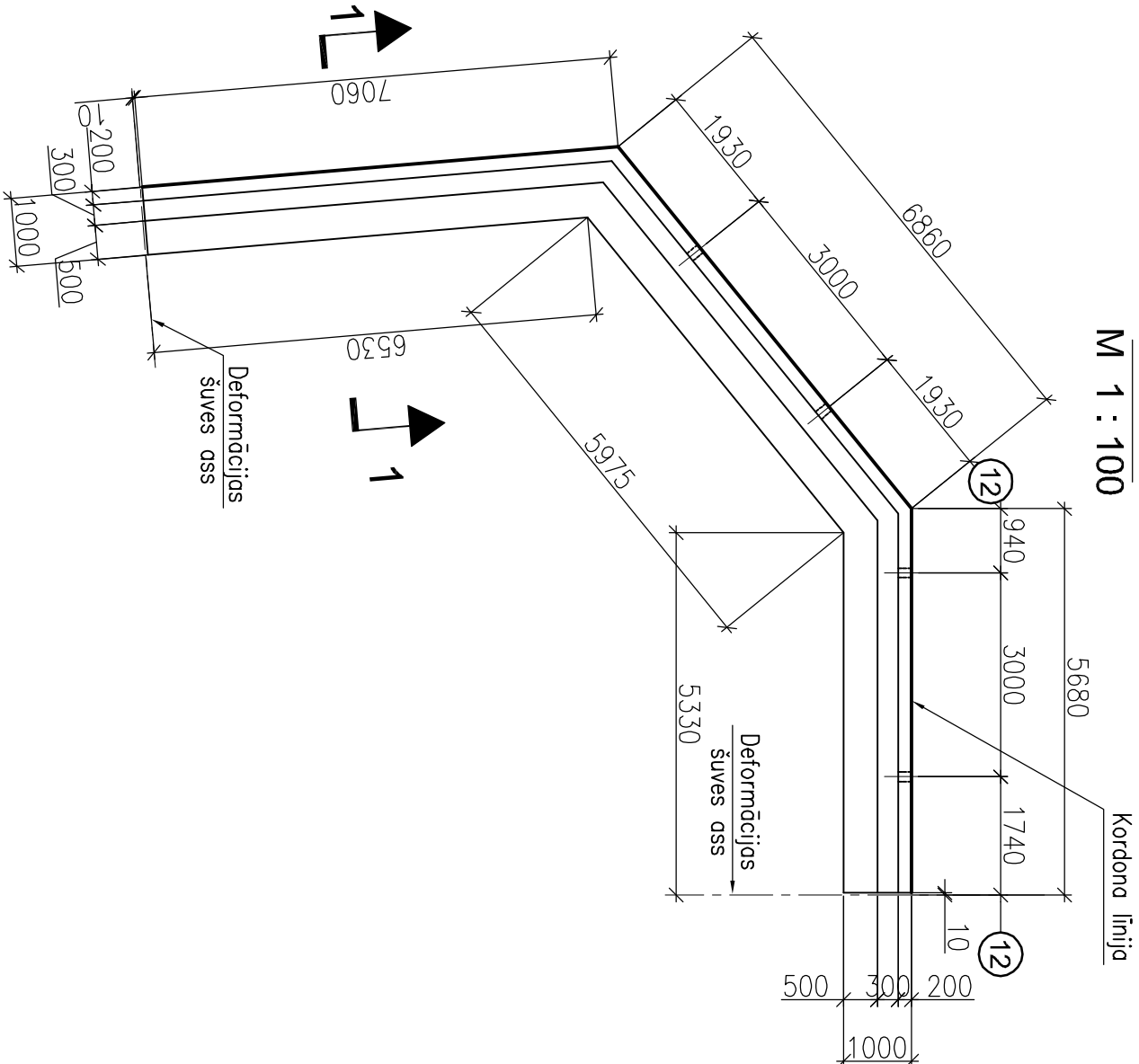
Pa A-A

M 1:2



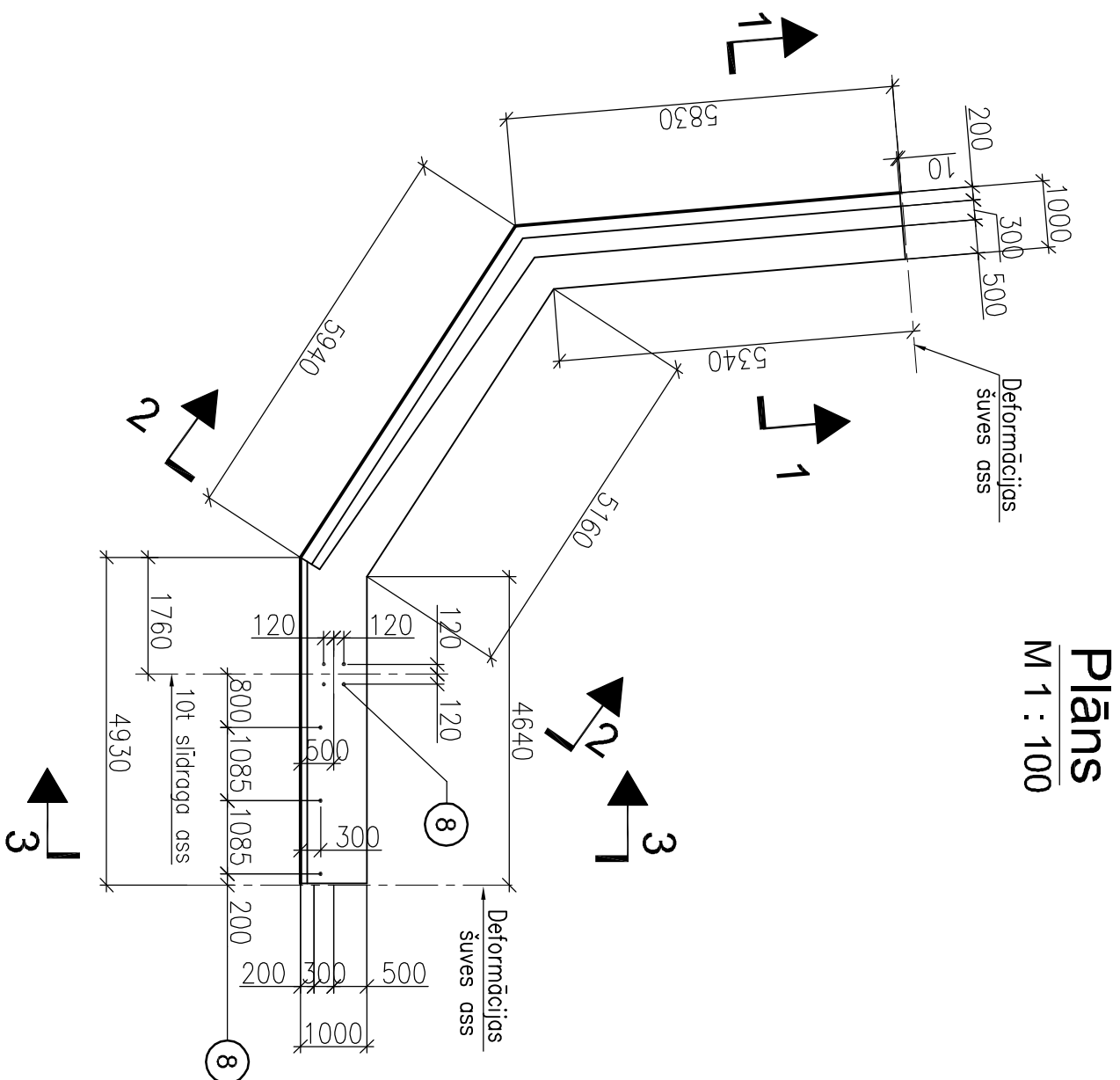
Plans

M 1 : 100



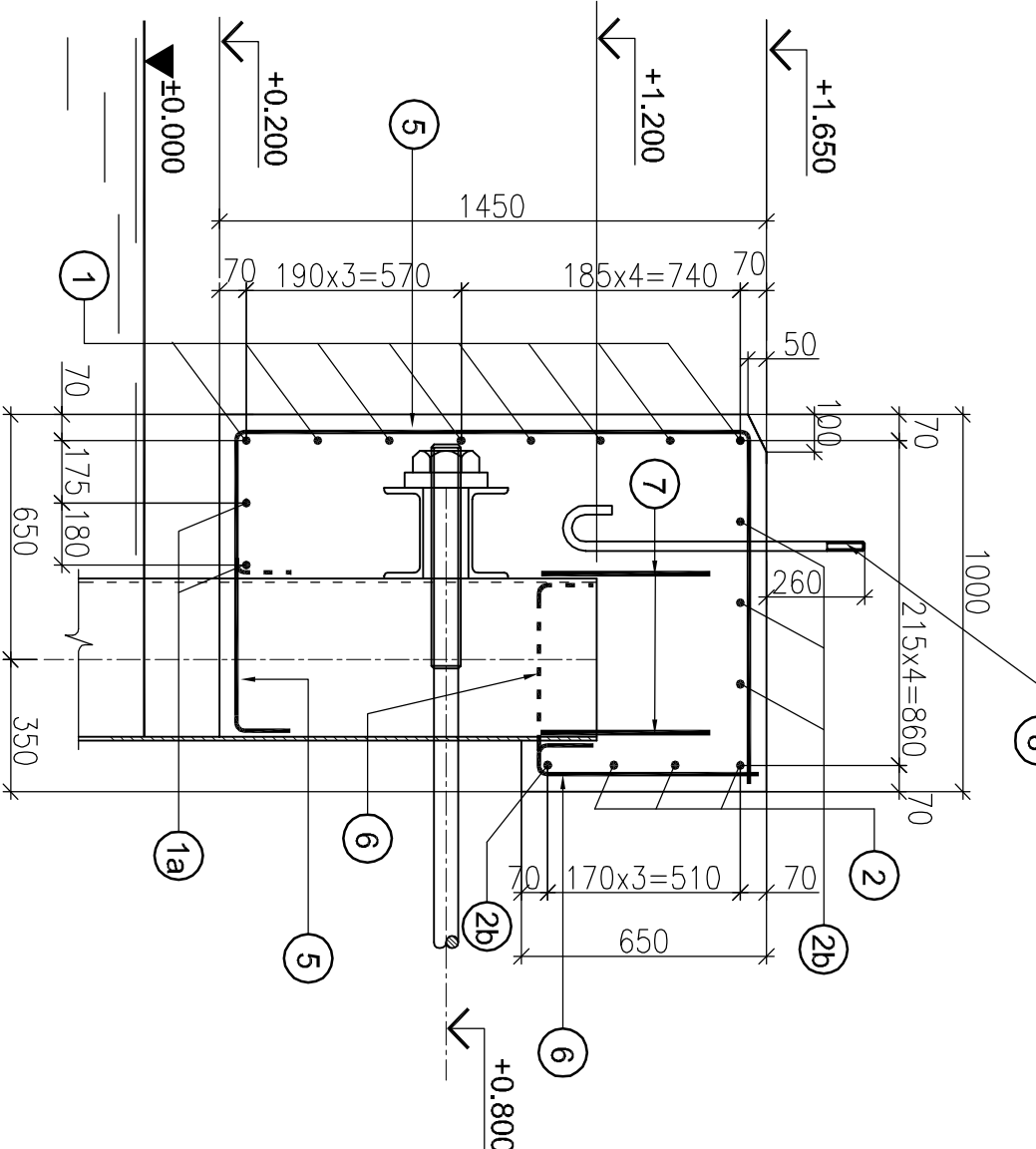
Šķersgriezums 2 - 2

M 1:20



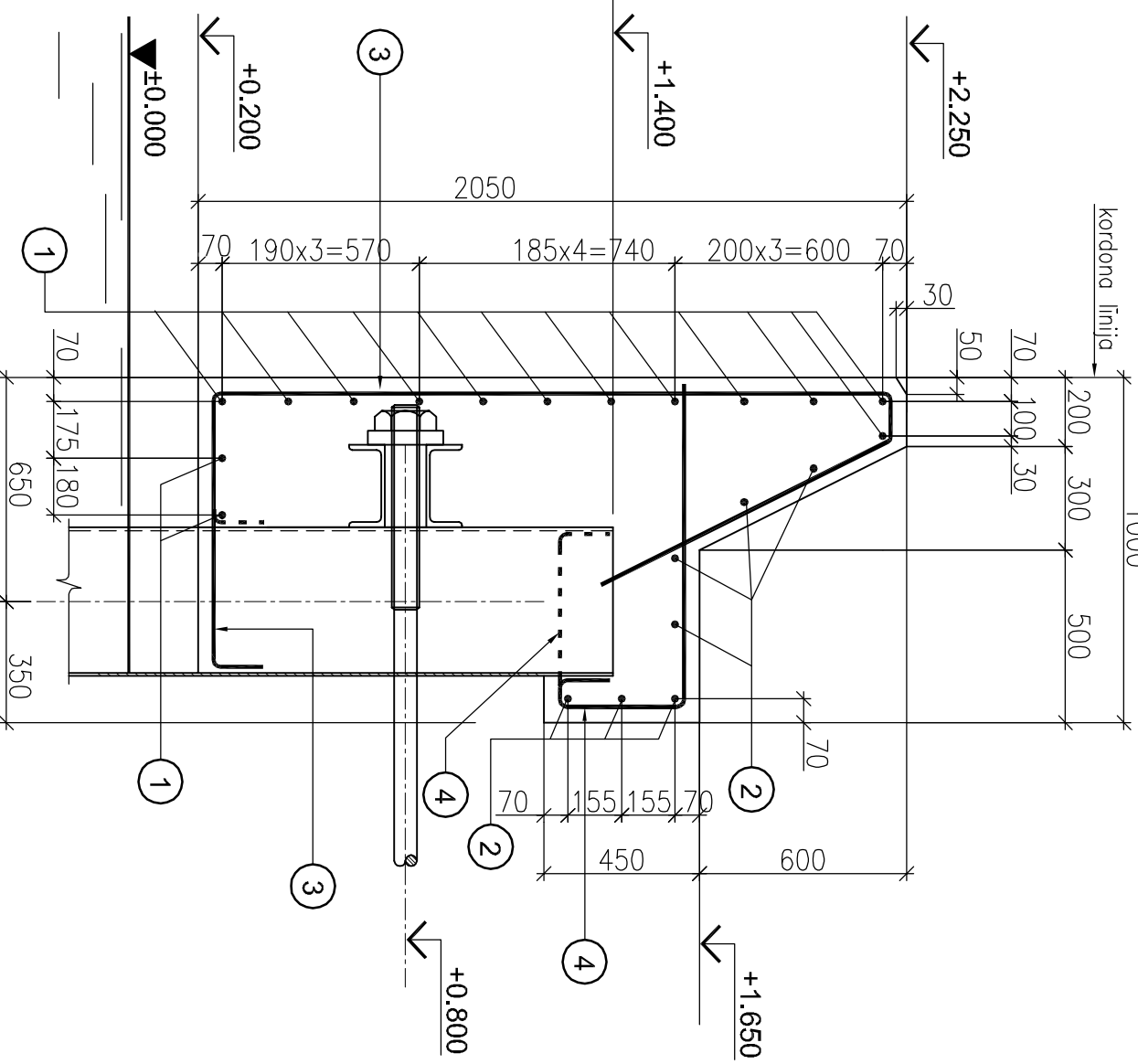
Šķersgriezums 3 - 3

M 1:20



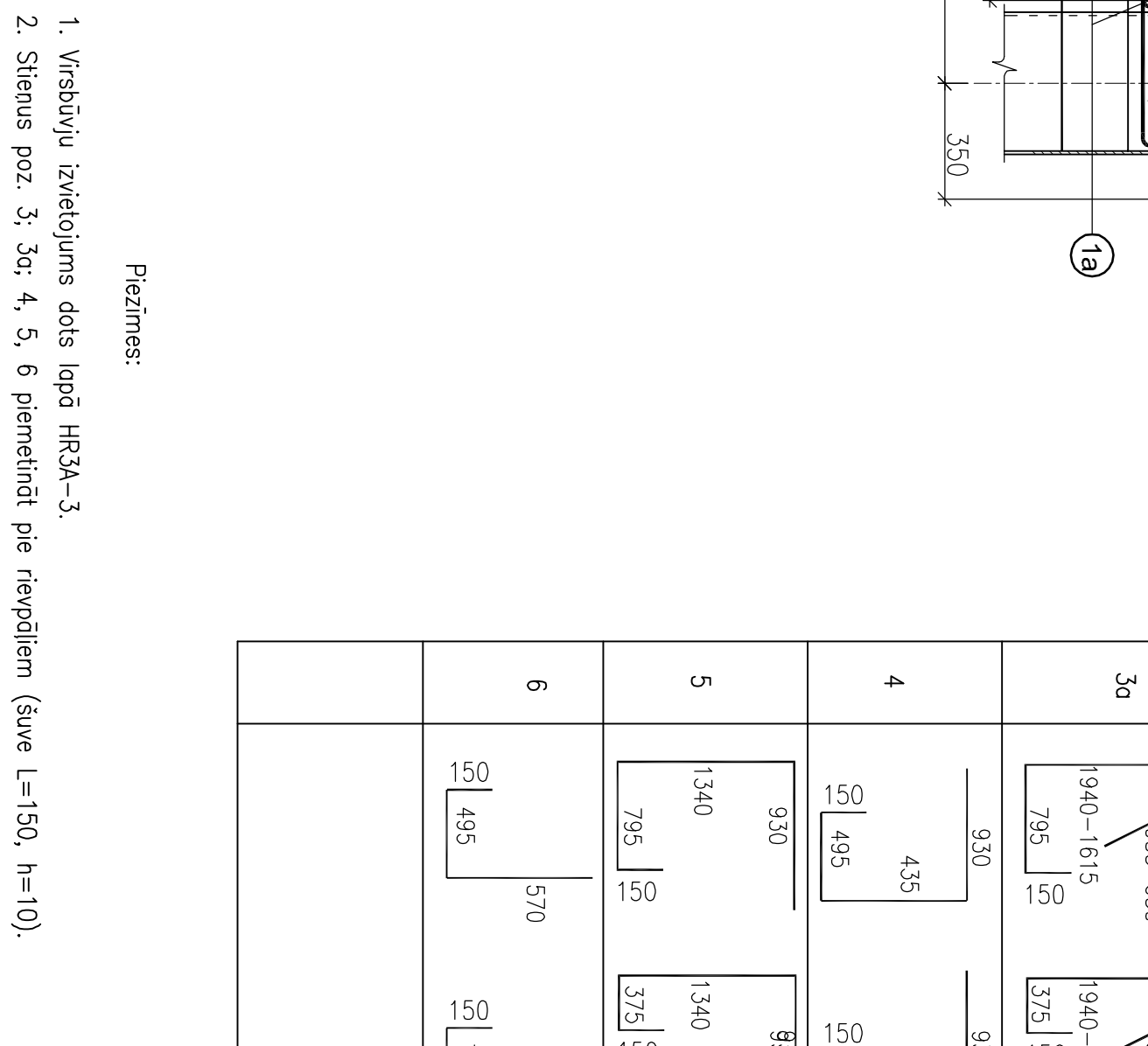
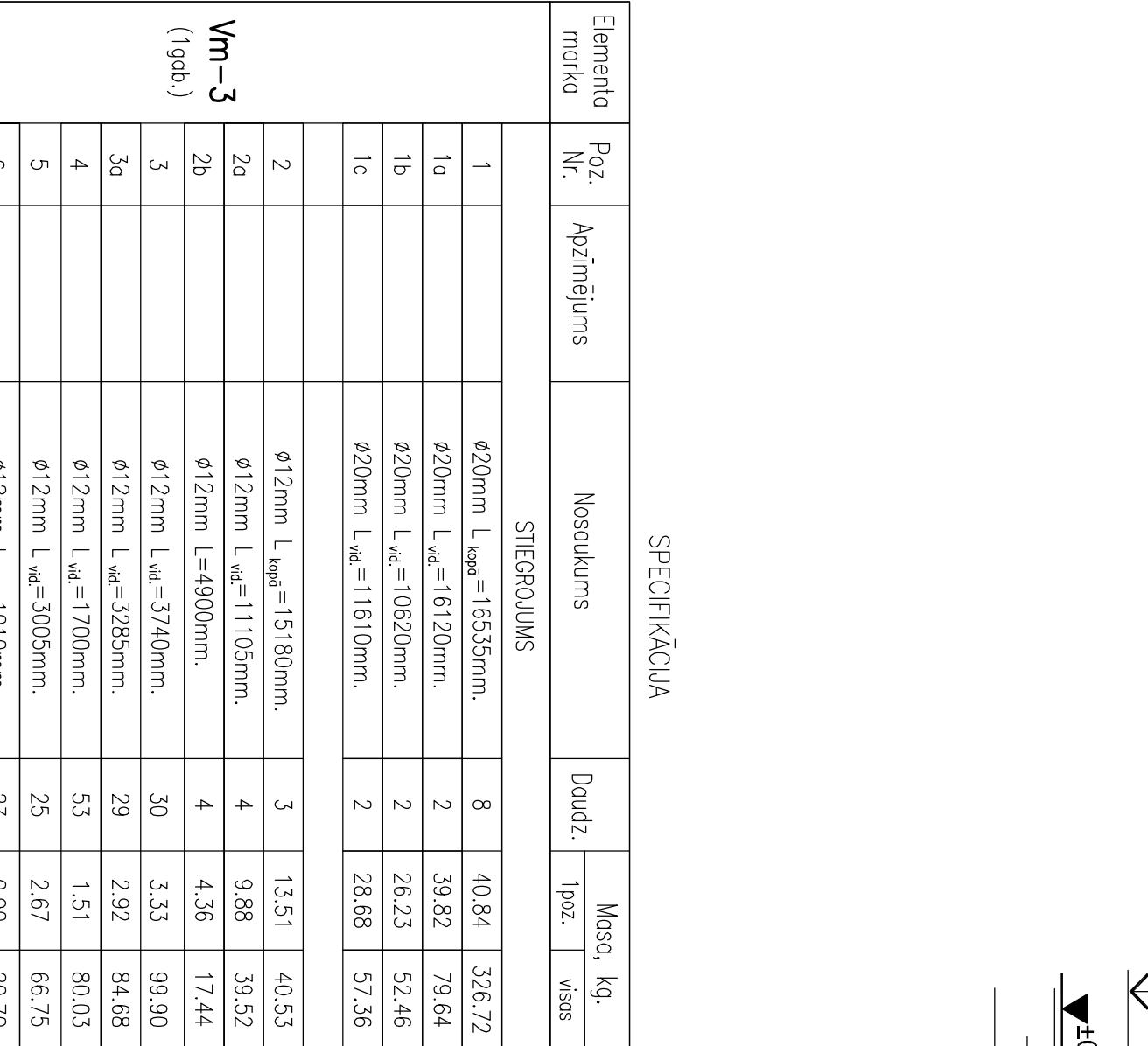
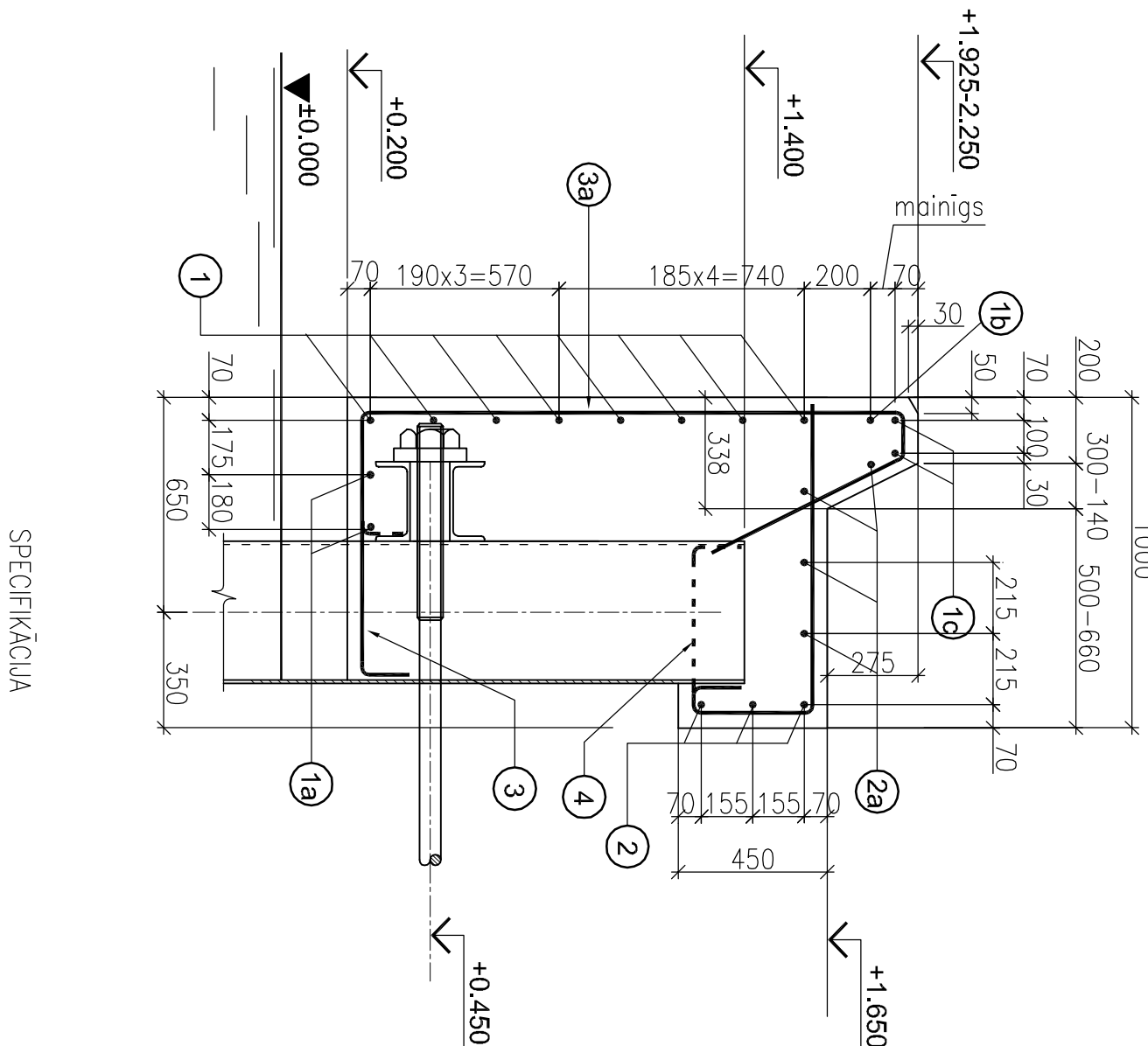
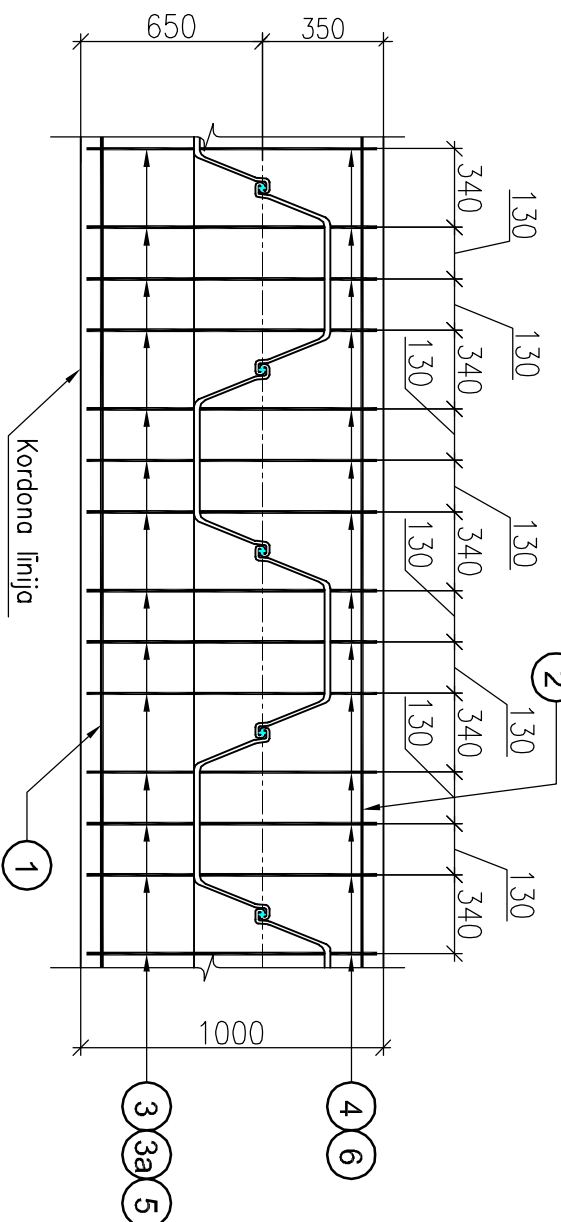
Šķersgriezums 1 - 1

M 1 : 20



Poz. 3, 3a, 4, 5, 6 uzstādīšanas shēma

M 1 : 25



1. Virsbūvju izvērtējums dots lapā HR3A-3.
2. Stienus poz. 3, 3a, 4, 5, 6 pieņemti pie rievplīšiem (šuve L=150, h=10).
3. Stienus poz. 7 pieņemti pie rievplīšiem (šuve L=150, h=10).
- (Sk. lapā HR3A-14)

| Elementa<br>māksa |  | Poz.<br>Nr.      | Apzīmējums | Nosaukums                              | Daudz. | Masa,<br>kg,<br>ipol.<br>visas | Piezīmes       |
|-------------------|--|------------------|------------|--|--------|--------------------------------|----------------|
|                   |  | STĒGRULIJS       |            |  |        |                                |                |
|                   |  |                  |            | Ø12 un Ø20                             |        |                                |                |
|                   |  | KOPĀ:            |            |  |        | 1291.0                         |                |
|                   |  | IELIEKUMS DENIJS |            |  |        |                                |                |
|                   |  | 12               | S235       | Kvadrātveida profils 140x100x2,5 I=475 | 4      | 4.32                           | 17.28          |
|                   |  |                  |            |  | KOPĀ:  | 17.28                          |                |
|                   |  |                  |            |  |        |                                |                |
|                   |  |                  |            |  |        |                                |                |
|                   |  | MATERIĀLU        |            |  |        |                                |                |
|                   |  |                  |            | Betons                                 |        | 25.38                          | m <sup>3</sup> |
|                   |  |                  |            |  |        |                                |                |