

PIELIKUMS NR.9

APGAISMOJUMA APRĒĶINS JĒKABA IELAI

Nits A

Stabu iela 108, k.2
www.nitsa.lv

Operator Daniils Povilans
Telephone +371 26457347
Fax +371 67332660
e-Mail daniils@nitsa.lv

Thorn 96259905 INDRA L 98W BPL CL1 MA60 [STD] / Luminaire Data Sheet

Luminous emittance 1:

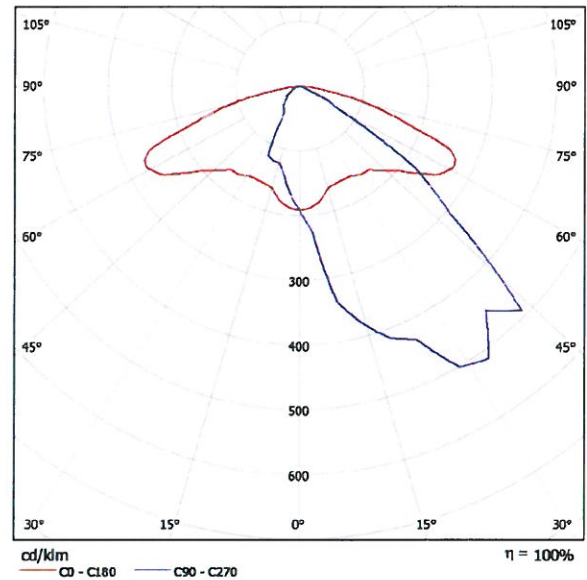


Luminaire classification according to CIE: 100
CIE flux code: 41 84 100 95 101

An LED road lighting luminaire with 7800lm light engine in a large body outline. Body and bracket in die-cast aluminium, body: powder coated RAL 9006, acrylic flat enclosure. Class I electrical, IP66. Post top or side entry mounting to Ø60 mm spigot with adjustable tilting. Bi-power dimming control by power line with additional wire. Complete with 4200K LED

Dimensions: 720 x 465 x 139 mm
Total power: 98 W
Weight: 7.9 kg
Scx: 0.052 m²

LED lifetime to 70% luminous flux at 25°C; 60,000 hours



Due to missing symmetry properties, no UGR table can be displayed for this luminaire.

Nits A

Stabu iela 108, k.2
www.nitsa.lv

Operator Daniils Povilans
Telephone +371 26457347
Fax +371 67332660
e-Mail daniils@nitsa.lv

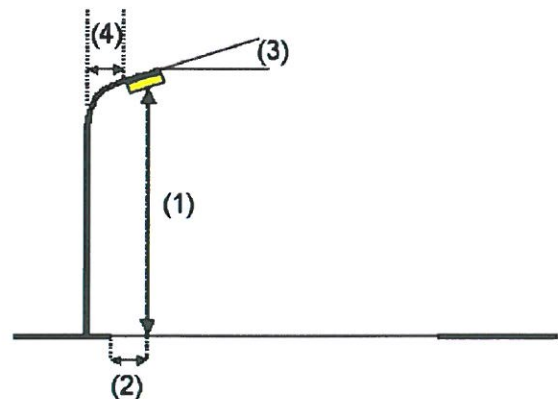
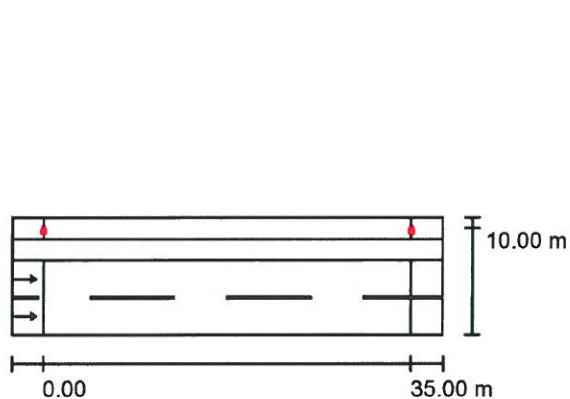
Street 1 / Planning data

Street Profile

Bicycle Lane 1 (Width: 2.000 m)
Grass Strip 1 (Width: 2.000 m)
Roadway 1 (Width: 7.000 m, Number of lanes: 2, tarmac: R3, q0: 0.070)

Light loss factor: 0.67

Luminaire Arrangements



Luminaire:	Thorn 96259905 INDRA L 98W BPL CL1 MA60 [STD]
Luminous flux (Luminaire):	7790 lm
Luminous flux (Lamps):	7790 lm
Luminaire Wattage:	98.0 W
Arrangement:	Single row, top
Pole Distance:	35.000 m
Mounting Height (1):	7.671 m
Height:	8.000 m
Overhang (2):	-2.641 m
Boom Angle (3):	15.0 °
Boom Length (4):	1.000 m

Maximum luminous intensities
at 70°: 531 cd/klm
at 80°: 208 cd/klm
at 90°: 4.27 cd/klm

Any direction forming the specified angle from the downward vertical, with the luminaire installed for use.

Arrangement complies with glare index class D.6.

Jekaba iela

Nits A

01.11.2013

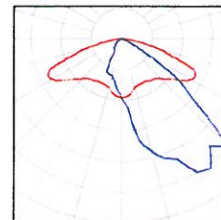
Nits A

Stabu iela 108, k.2
www.nitsa.lv

Operator Daniils Povilans
Telephone +371 26457347
Fax +371 67332660
e-Mail daniils@nitsa.lv

Street 1 / Luminaire parts list

Thorn 96259905 INDRA L 98W BPL CL1 MA60
[STD]
Article No.: 96259905
Luminous flux (Luminaire): 7790 lm
Luminous flux (Lamps): 7790 lm
Luminaire Wattage: 98.0 W
Luminaire classification according to CIE: 100
CIE flux code: 41 84 100 95 101
Fitting: 1 x LED 98 W (Correction Factor 1.000).

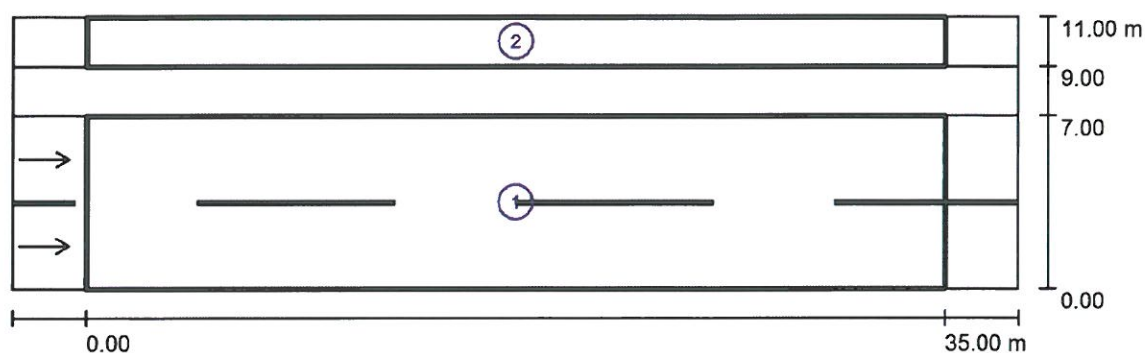


Nits A

Stabu iela 108, k.2
www.nitsa.lv

Operator Daniils Povilans
Telephone +371 26457347
Fax +371 67332660
e-Mail daniils@nitsa.lv

Street 1 / Photometric Results



Light loss factor: 0.67

Scale 1:294

Calculation Field List

- 1 Valuation Field Roadway 1
Length: 35.000 m, Width: 7.000 m
Grid: 12 x 6 Points
Accompanying Street Elements: Roadway 1.
tarmac: R3, q0: 0.070
Selected Lighting Class: ME4a

(Not all lighting performance requirements are met.)

	L_{av} [cd/m ²]	U0	UI	TI [%]	SR
Calculated values:	0.47	0.63	0.62	12	0.59
Required values according to class:	≥ 0.75	≥ 0.40	≥ 0.60	≤ 15	≥ 0.50
Fulfilled/Not fulfilled:	✗	✓	✓	✓	✓

Jekaba iela

Nits A

01.11.2013

Nits A

Stabu iela 108, k.2
www.nitsa.lv

Operator Daniils Povilans
Telephone +371 26457347
Fax +371 67332660
e-Mail daniils@nitsa.lv

Street 1 / Photometric Results

Calculation Field List

- 2 Valuation Field Bicycle Lane 1
Length: 35.000 m, Width: 2.000 m
Grid: 12 x 3 Points
Accompanying Street Elements: Bicycle Lane 1.
Selected Lighting Class: S6 (Not all lighting performance requirements are met.)

	E_{av} [lx]	E_{min} [lx]
Calculated values:	5.42	2.80
Required values according to class:	≥ 2.00	≥ 0.60
Fulfilled/Not fulfilled:	 1	

¹ Notice: To provide for uniformity, the actual value of the maintained average illuminance may not exceed 1.5 times the minimum value indicated for the class.

Jekaba iela

Nits A

Stabu iela 108, k.2
www.nitsa.lv

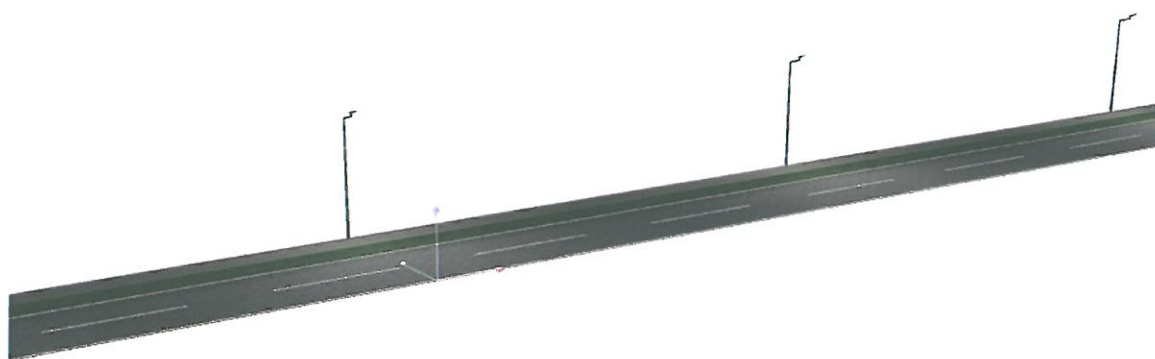


Nits A

01.11.2013

Operator Daniils Povilans
Telephone +371 26457347
Fax +371 67332660
e-Mail daniils@nitsa.lv

Street 1 / 3D Rendering

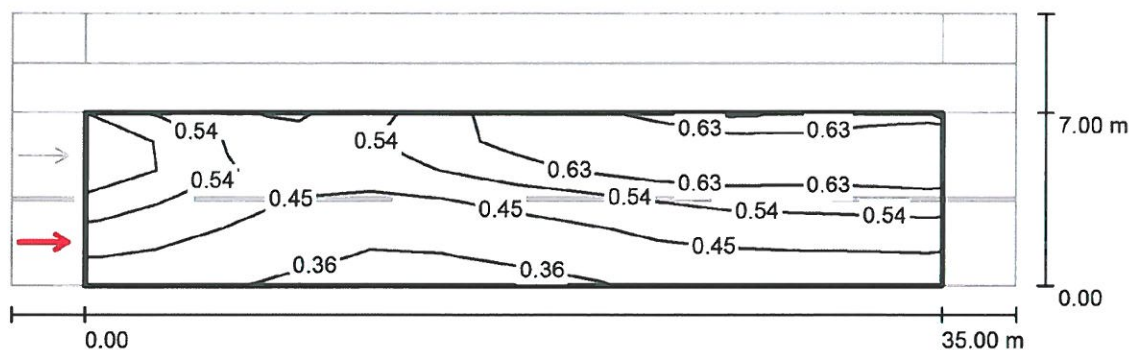


Nits A

Stabu iela 108, k.2
www.nitsa.lv

Operator Daniils Povilans
Telephone +371 26457347
Fax +371 67332660
e-Mail daniils@nitsa.lv

Street 1 / Valuation Field Roadway 1 / Observer 1 / Isolines (L)



Values in Candela/m², Scale 1 : 294

Grid: 12 x 6 Points

Observer Position: (-60.000 m, 1.750 m, 1.500 m)

tarmac: R3, q0: 0.070

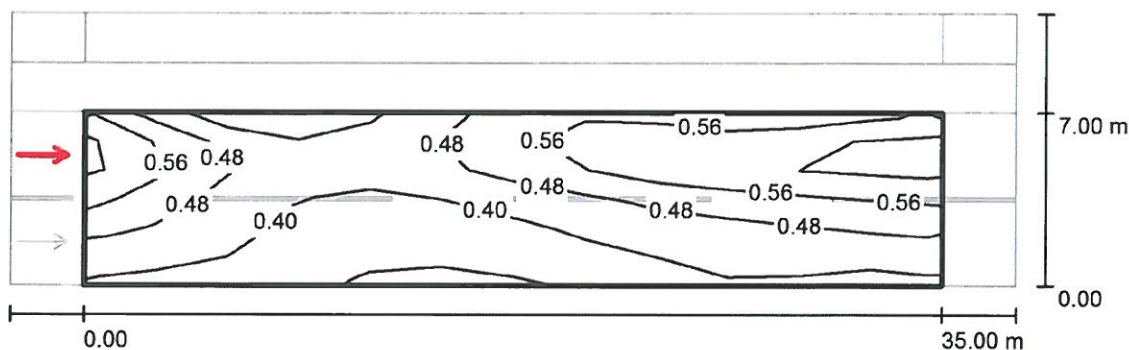
	L_{av} [cd/m²]	U0	UI	TI [%]
Calculated values:	0.52	0.63	0.77	7
Required values according to class ME4a:	≥ 0.75	≥ 0.40	≥ 0.60	≤ 15
Fulfilled/Not fulfilled:	✗	✓	✓	✓

Nits A

Stabu iela 108, k.2
www.nitsa.lv

Operator Daniils Povilans
Telephone +371 26457347
Fax +371 67332660
e-Mail daniils@nitsa.lv

Street 1 / Valuation Field Roadway 1 / Observer 2 / Isolines (L)

Values in Candela/m², Scale 1 : 294

Grid: 12 x 6 Points

Observer Position: (-60.000 m, 5.250 m, 1.500 m)

tarmac: R3, q0: 0.070

	L_{av} [cd/m ²]	U0	UI	TI [%]
Calculated values:	0.47	0.66	0.62	12
Required values according to class ME4a:	≥ 0.75	≥ 0.40	≥ 0.60	≤ 15
Fulfilled/Not fulfilled:	✗	✓	✓	✓