

Operator  
Telephone  
Fax  
e-Mail

## Lokomotīves iela (1. posms) / Planning data

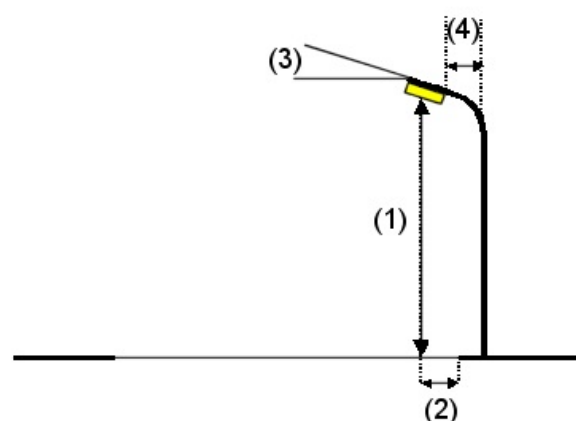
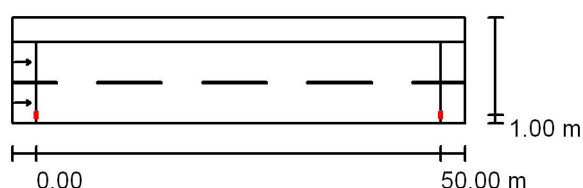
### Street Profile

Zāliens (Width: 3.000 m)

Brauktuve (Width: 10.000 m, Number of lanes: 2, tarmac: R3, q0: 0.070)

Light loss factor: 0.80

### Luminaire Arrangements



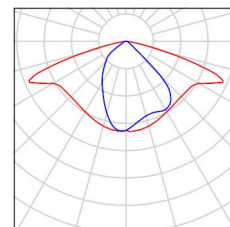
Luminaire:	CREE XSPC02210E--K_24-Q4 3000K XSP1 - E - Type 210 - Q4 3000K	
Luminous flux (Luminaire):	5580 lm	Maximum luminous intensities
Luminous flux (Lamps):	6002 lm	at 70°: 676 cd/klm
Luminaire Wattage:	73.0 W	at 80°: 153 cd/klm
Arrangement:	Single row, bottom	at 90°: 0.00 cd/klm
Pole Distance:	50.000 m	Any direction forming the specified angle from the downward vertical, with the luminaire installed for use.
Mounting Height (1):	10.000 m	No luminous intensities above 95°.
Height:	9.900 m	Arrangement complies with luminous intensity class G1.
Overhang (2):	1.000 m	Arrangement complies with glare index class D.5.
Boom Angle (3):	0.0 °	
Boom Length (4):	2.000 m	

Operator  
Telephone  
Fax  
e-Mail

## Lokomotīves iela (1. posms) / Luminaire parts list

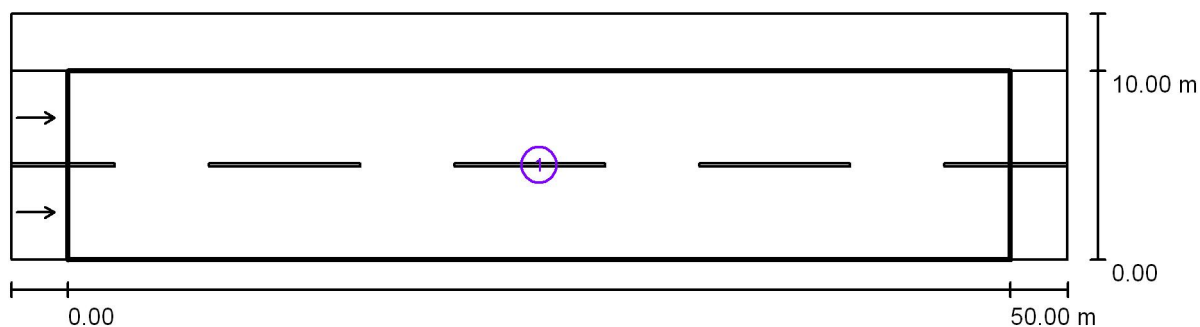
CREE XSPC02210E--K\_24-Q4 3000K XSP1 - E  
- Type 210 - Q4 3000K  
Article No.: XSPC02210E--K\_24-Q4 3000K  
Luminous flux (Luminaire): 5580 lm  
Luminous flux (Lamps): 6002 lm  
Luminaire Wattage: 73.0 W  
Luminaire classification according to DIN: A30  
CIE flux code: 45 77 97 100 93  
Fitting: 1 x 5 LED MD-A Q4 3K 12V (Correction  
Factor 1.000).

See our luminaire  
catalog for an image of  
the luminaire.



Operator  
Telephone  
Fax  
e-Mail

## Lokomotīves iela (1. posms) / Photometric Results



Light loss factor: 0.80

Scale 1:401

### Calculation Field List

- 1 Brauktuve  
Length: 50.000 m, Width: 10.000 m  
Grid: 17 x 6 Points  
Accompanying Street Elements: Brauktuve.  
tarmac: R3, q0: 0.070  
Selected Lighting Class: ME6

(All lighting performance requirements are met.)

Calculated values:

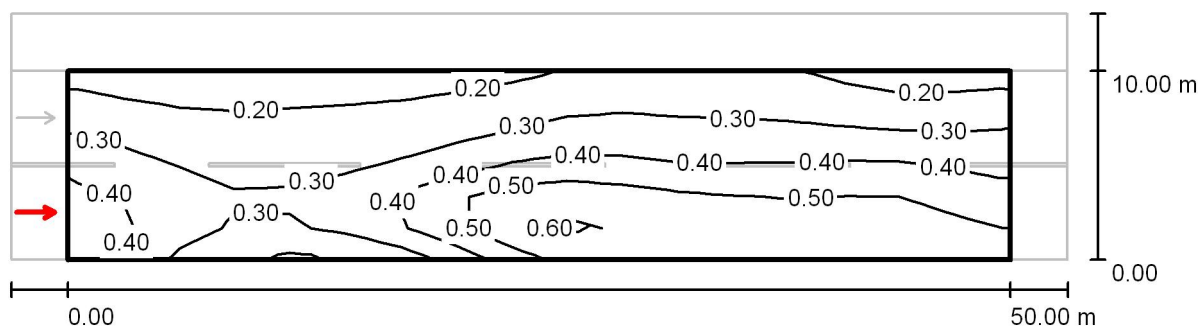
Required values according to class:

Fulfilled/Not fulfilled:

$L_{av}$ [cd/m <sup>2</sup> ]	U0	UI	TI [%]	SR
0.35	0.44	0.49	13	0.48
≥ 0.30	≥ 0.35	≥ 0.40	≤ 15	/
✓	✓	✓	✓	✓

Operator  
Telephone  
Fax  
e-Mail

### Lokomotīves iela (1. posms) / Brauktuve / Observer 1 / Isolines (L)



Values in Candela/m², Scale 1 : 401

Grid: 17 x 6 Points

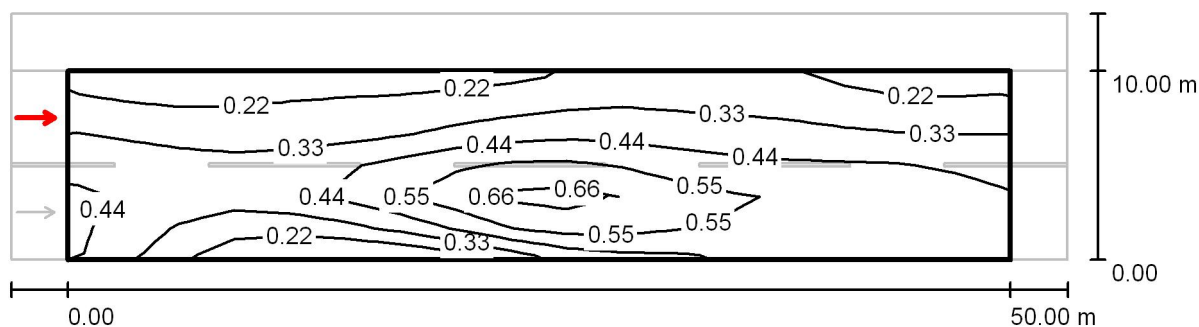
Observer Position: (-60.000 m, 2.500 m, 1.500 m)

tarmac: R3, q0: 0.070

	$L_{av}$ [cd/m²]	U0	UI	TI [%]
Calculated values:	0.35	0.46	0.49	13
Required values according to class ME6:	$\geq 0.30$	$\geq 0.35$	$\geq 0.40$	$\leq 15$
Fulfilled/Not fulfilled:	✓	✓	✓	✓

Operator  
Telephone  
Fax  
e-Mail

### Lokomotīves iela (1. posms) / Brauktuve / Observer 2 / Isolines (L)



Values in Candela/m², Scale 1 : 401

Grid: 17 x 6 Points

Observer Position: (-60.000 m, 7.500 m, 1.500 m)

tarmac: R3, q0: 0.070

	$L_{av}$ [cd/m²]	U0	UI	TI [%]
Calculated values:	0.39	0.44	0.65	10
Required values according to class ME6:	$\geq 0.30$	$\geq 0.35$	$\geq 0.40$	$\leq 15$
Fulfilled/Not fulfilled:	✓	✓	✓	✓