

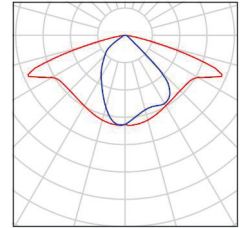


Operator
Telephone
Fax
e-Mail

Dzintaru ielas apgaismojums, Ventspils / Luminaire parts list

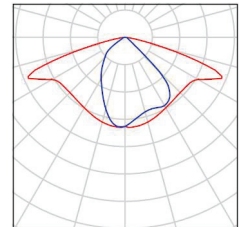
10 Pieces CREE XSPC02210E--K_24-Q4 3000K XSP1 - E
- Type 210 - Q4 3000K
Article No.: XSPC02210E--K_24-Q4 3000K
Luminous flux (Luminaire): 5580 lm
Luminous flux (Lamps): 6002 lm
Luminaire Wattage: 73.0 W
Luminaire classification according to CIE: 100
CIE flux code: 45 77 97 100 93
Fitting: 1 x 5 LED MD-A Q4 3K 12V (Correction Factor 1.000).

See our luminaire catalog for an image of the luminaire.



6 Pieces CREE XSPC02210E--K_24-Q8 3000K XSP1 - E
- Type 210 - Q8 3000K
Article No.: XSPC02210E--K_24-Q8 3000K
Luminous flux (Luminaire): 6677 lm
Luminous flux (Lamps): 7182 lm
Luminaire Wattage: 92.0 W
Luminaire classification according to CIE: 100
CIE flux code: 45 77 97 100 93
Fitting: 1 x 5 LED MD-A Q8 3K 12V (Correction Factor 1.000).

See our luminaire catalog for an image of the luminaire.



Operator
Telephone
Fax
e-Mail

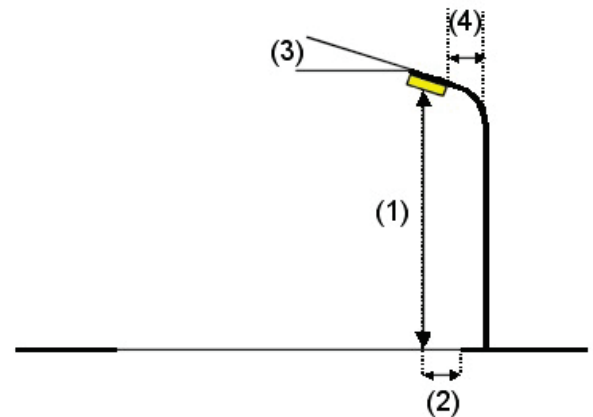
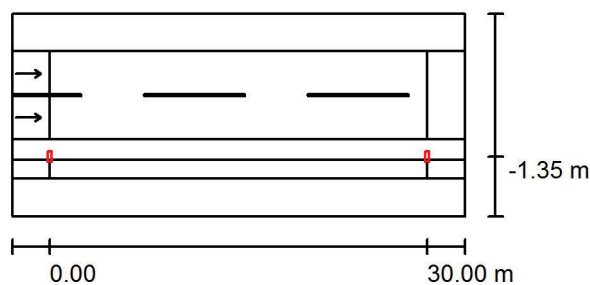
Dzintaru iela (1. posms) / Planning data

Street Profile

Zāliens (Width: 3.000 m)
Brauktuve (Width: 7.000 m, Number of lanes: 2, tarmac: R3, q0: 0.070)
Zāliens (Width: 1.600 m)
Ietve (Width: 1.500 m)
Zāliens (Width: 3.000 m)

Maintenance factor: 0.80

Luminaire Arrangements



Luminaire:	CREE XSPC02210E--K_24-Q4 3000K XSP1 - E - Type 210 - Q4 3000K
Luminous flux (Luminaire):	5580 lm
Luminous flux (Lamps):	6002 lm
Luminaire Wattage:	73.0 W
Arrangement:	Single row, bottom
Pole Distance:	30.000 m
Mounting Height (1):	10.000 m
Height:	9.900 m
Overhang (2):	-1.350 m
Boom Angle (3):	0.0°
Boom Length (4):	-4.700 m

Maximum luminous intensities

at 70°: 676 cd/klm
at 80°: 153 cd/klm
at 90°: 0.00 cd/klm

Any direction forming the specified angle from the downward vertical, with the luminaire installed for use.

No luminous intensities above 95°.

Arrangement complies with luminous intensity class G1.

Arrangement complies with glare index class D.5.

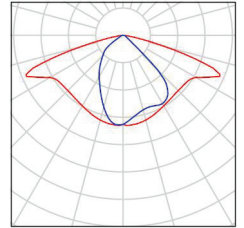


Operator
Telephone
Fax
e-Mail

Dzintaru iela (1. posms) / Luminaire parts list

CREE XSPC02210E--K_24-Q4 3000K XSP1 - E
- Type 210 - Q4 3000K
Article No.: XSPC02210E--K_24-Q4 3000K
Luminous flux (Luminaire): 5580 lm
Luminous flux (Lamps): 6002 lm
Luminaire Wattage: 73.0 W
Luminaire classification according to CIE: 100
CIE flux code: 45 77 97 100 93
Fitting: 1 x 5 LED MD-A Q4 3K 12V (Correction
Factor 1.000).

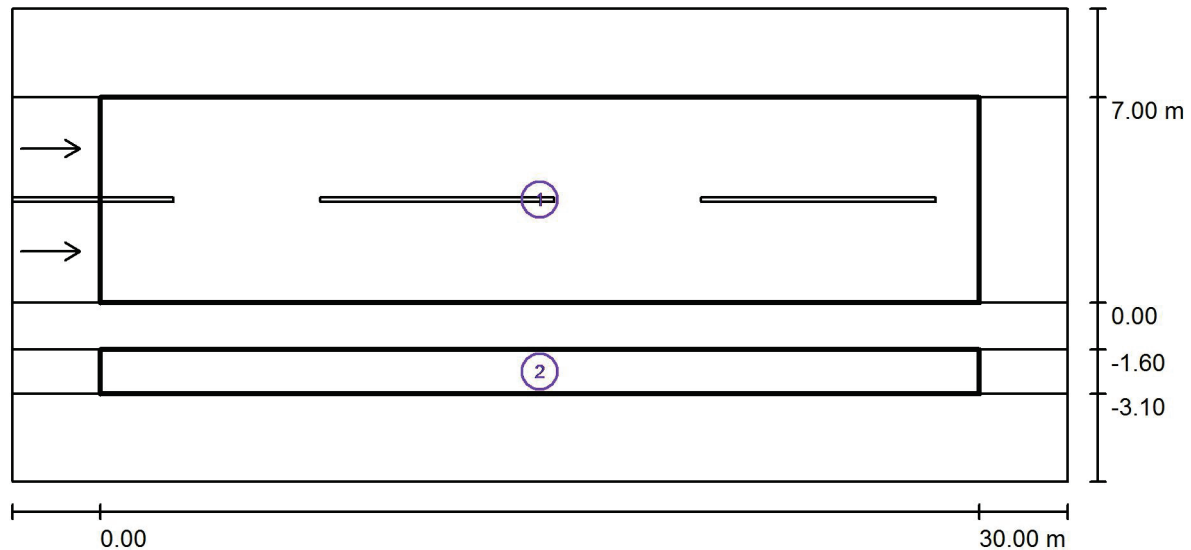
See our luminaire
catalog for an image of
the luminaire.





Operator
Telephone
Fax
e-Mail

Dzintaru iela (1. posms) / Photometric Results



Maintenance factor: 0.80

Scale 1:258

Calculation Field List

- 1 Brauktuve
Length: 30.000 m, Width: 7.000 m
Grid: 10 x 6 Points
Accompanying Street Elements: Brauktuve.
tarmac: R3, q0: 0.070
Selected Lighting Class: ME5

(All lighting performance requirements are met.)

	L_{av} [cd/m ²]	U0	UI	TI [%]	SR
Calculated values:	0.59	0.51	0.80	10	0.77
Required values according to class:	≥ 0.50	≥ 0.35	≥ 0.40	≤ 15	≥ 0.50
Fulfilled/Not fulfilled:	✓	✓	✓	✓	✓



Operator
Telephone
Fax
e-Mail

Dzintaru iela (1. posms) / Photometric Results

Calculation Field List

- 2 letve
Length: 30.000 m, Width: 1.500 m
Grid: 10 x 3 Points
Accompanying Street Elements: letve.
Selected Lighting Class: CE5

(All lighting performance requirements are met.)

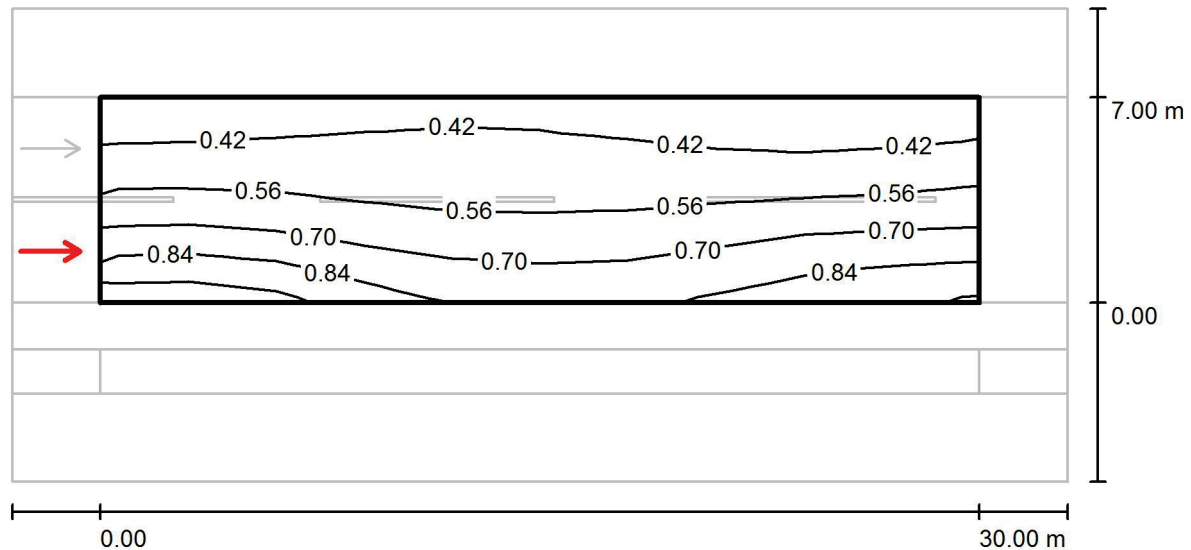
Calculated values:
Required values according to class:
Fulfilled/Not fulfilled:

E_{av} [lx]	U0
8.92	0.47
≥ 7.50	≥ 0.40
✓	✓



Operator
Telephone
Fax
e-Mail

Dzintaru iela (1. posms) / Brauktuve / Observer 1 / Isolines (L)



Values in Candela/m², Scale 1 : 258

Grid: 10 x 6 Points

Observer Position: (-60.000 m, 1.750 m, 1.500 m)

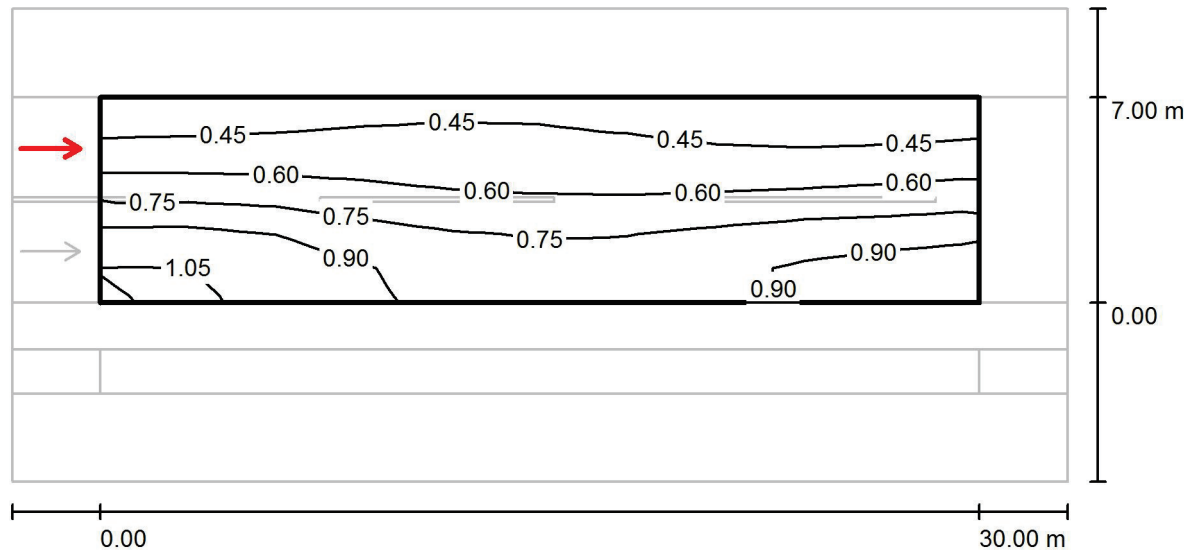
tarmac: R3, q0: 0.070

	L_{av} [cd/m ²]	U0	UI	TI [%]
Calculated values:	0.59	0.54	0.80	10
Required values according to class ME5:	≥ 0.50	≥ 0.35	≥ 0.40	≤ 15
Fulfilled/Not fulfilled:	✓	✓	✓	✓



Operator
Telephone
Fax
e-Mail

Dzintaru iela (1. posms) / Brauktuve / Observer 2 / Isolines (L)



Values in Candela/m², Scale 1 : 258

Grid: 10 x 6 Points

Observer Position: (-60.000 m, 5.250 m, 1.500 m)

tarmac: R3, q0: 0.070

	L_{av} [cd/m ²]	U0	UI	TI [%]
Calculated values:	0.67	0.51	0.89	7
Required values according to class ME5:	≥ 0.50	≥ 0.35	≥ 0.40	≤ 15
Fulfilled/Not fulfilled:	✓	✓	✓	✓

Operator
Telephone
Fax
e-Mail

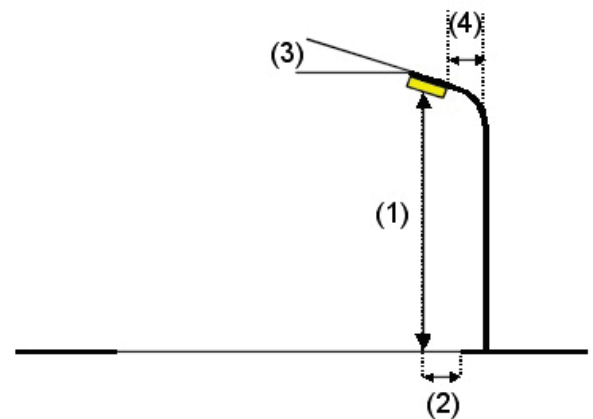
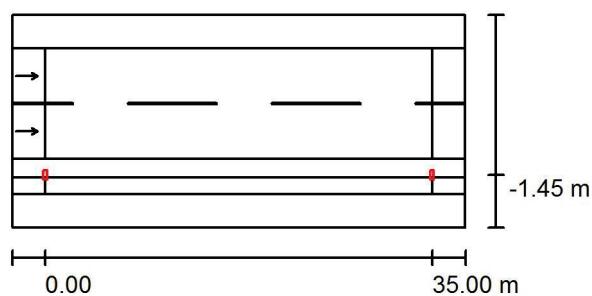
Dzintaru iela (2. posms) / Planning data

Street Profile

Zāliens (Width: 3.000 m)
Brauktuve (Width: 10.000 m, Number of lanes: 2, tarmac: R3, q0: 0.070)
Zāliens (Width: 1.700 m)
Ietve (Width: 1.500 m)
Zāliens (Width: 3.000 m)

Maintenance factor: 0.80

Luminaire Arrangements



Luminaire:	CREE XSPC02210E--K_24-Q8 3000K XSP1 - E - Type 210 - Q8 3000K
Luminous flux (Luminaire):	6677 lm
Luminous flux (Lamps):	7182 lm
Luminaire Wattage:	92.0 W
Arrangement:	Single row, bottom
Pole Distance:	35.000 m
Mounting Height (1):	10.000 m
Height:	9.900 m
Overhang (2):	-1.441 m
Boom Angle (3):	5.0 °
Boom Length (4):	2.000 m

Maximum luminous intensities

at 70°: 677 cd/klm
at 80°: 208 cd/klm
at 90°: 2.30 cd/klm

Any direction forming the specified angle from the downward vertical, with the luminaire installed for use.

No luminous intensities above 95°.

Arrangement complies with glare index class D.5.

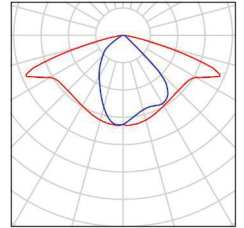


Operator
Telephone
Fax
e-Mail

Dzintaru iela (2. posms) / Luminaire parts list

CREE XSPC02210E--K_24-Q8 3000K XSP1 - E
- Type 210 - Q8 3000K
Article No.: XSPC02210E--K_24-Q8 3000K
Luminous flux (Luminaire): 6677 lm
Luminous flux (Lamps): 7182 lm
Luminaire Wattage: 92.0 W
Luminaire classification according to CIE: 100
CIE flux code: 45 77 97 100 93
Fitting: 1 x 5 LED MD-A Q8 3K 12V (Correction
Factor 1.000).

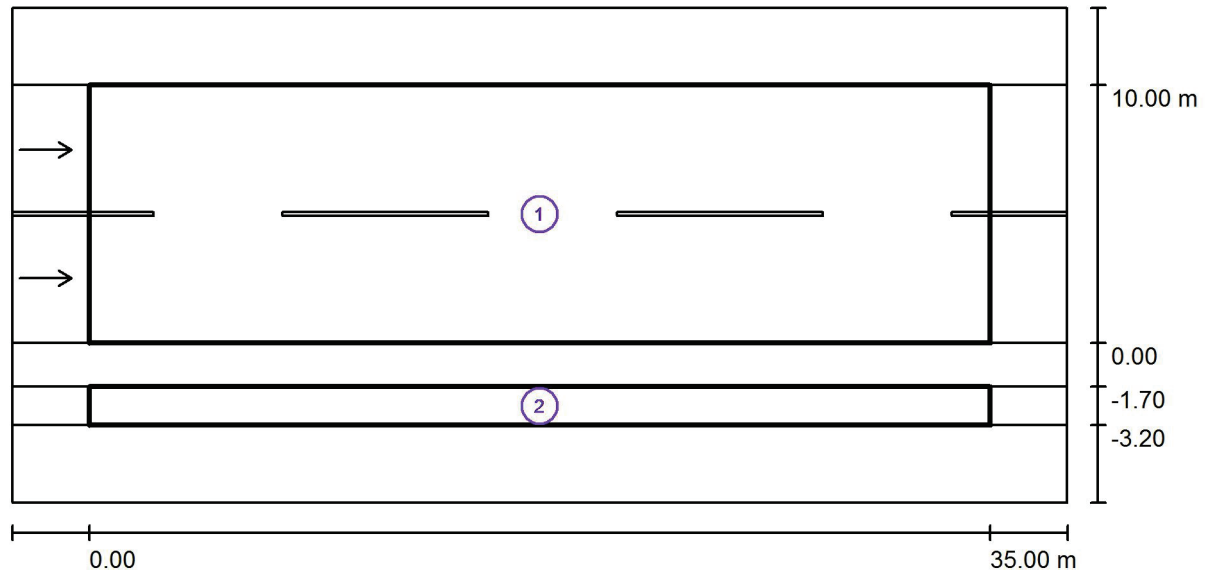
See our luminaire
catalog for an image of
the luminaire.





Operator
Telephone
Fax
e-Mail

Dzintaru iela (2. posms) / Photometric Results



Maintenance factor: 0.80

Scale 1:294

Calculation Field List

- 1 Brauktuve
Length: 35.000 m, Width: 10.000 m
Grid: 12 x 6 Points
Accompanying Street Elements: Brauktuve.
tarmac: R3, q0: 0.070
Selected Lighting Class: ME5

(All lighting performance requirements are met.)

	L_{av} [cd/m ²]	U0	UI	TI [%]	SR
Calculated values:	0.50	0.39	0.74	13	0.62
Required values according to class:	≥ 0.50	≥ 0.35	≥ 0.40	≤ 15	≥ 0.50
Fulfilled/Not fulfilled:	✓	✓	✓	✓	✓



Operator
Telephone
Fax
e-Mail

Dzintaru iela (2. posms) / Photometric Results

Calculation Field List

- 2 letve
Length: 35.000 m, Width: 1.500 m
Grid: 12 x 3 Points
Accompanying Street Elements: letve.
Selected Lighting Class: CE5

(All lighting performance requirements are met.)

Calculated values:

Required values according to class:

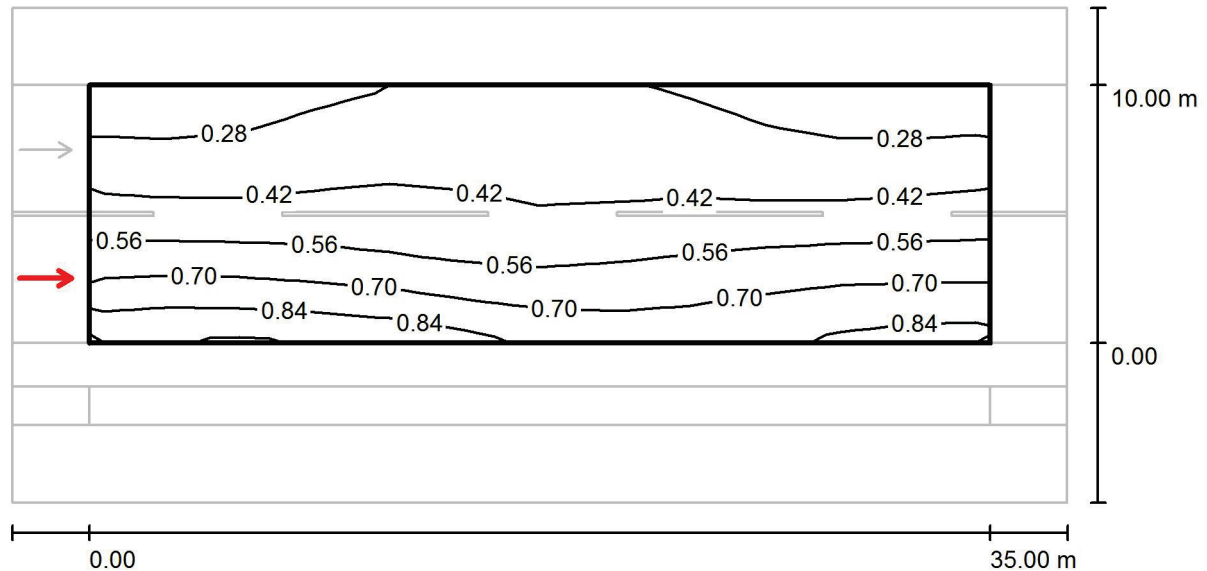
Fulfilled/Not fulfilled:

E_{av} [lx]	U0
8.25	0.41
≥ 7.50	≥ 0.40
✓	✓



Operator
Telephone
Fax
e-Mail

Dzintaru iela (2. posms) / Brauktuve / Observer 1 / Isolines (L)



Values in Candela/m², Scale 1 : 294

Grid: 12 x 6 Points

Observer Position: (-60.000 m, 2.500 m, 1.500 m)

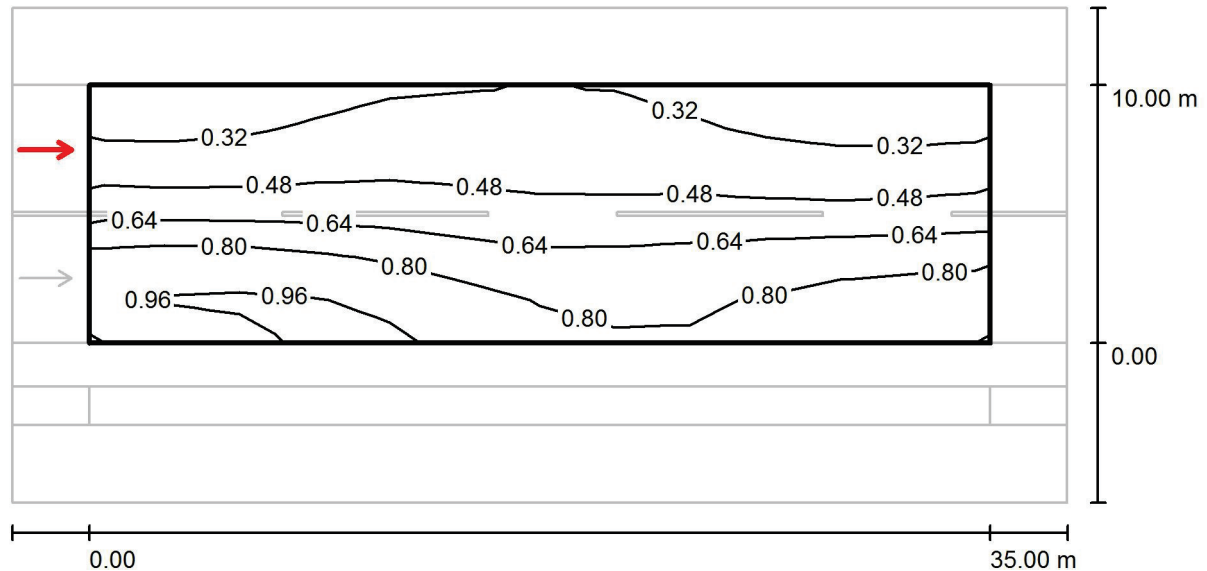
tarmac: R3, q0: 0.070

	L_{av} [cd/m ²]	U0	UI	TI [%]
Calculated values:	0.50	0.44	0.83	13
Required values according to class ME5:	≥ 0.50	≥ 0.35	≥ 0.40	≤ 15
Fulfilled/Not fulfilled:	✓	✓	✓	✓



Operator
Telephone
Fax
e-Mail

Dzintaru iela (2. posms) / Brauktuve / Observer 2 / Isolines (L)



Values in Candela/m², Scale 1 : 294

Grid: 12 x 6 Points

Observer Position: (-60.000 m, 7.500 m, 1.500 m)

tarmac: R3, q0: 0.070

	L_{av} [cd/m²]	U0	UI	TI [%]
Calculated values:	0.59	0.39	0.74	7
Required values according to class ME5:	≥ 0.50	≥ 0.35	≥ 0.40	≤ 15
Fulfilled/Not fulfilled:	✓	✓	✓	✓