

SIA Gaismas Stils
 www.gaismasstils.lv
 Maskavas iela 12, Rīga
 LV-1050, Latvija

Operator Edgars Svētiņš
 Telephone +371 67276760
 Fax +371 67797444
 e-Mail edgars@gaismasstils.lv

Table of contents

Ventspils ielas - kuldigas iela	
Table of contents	1
Kuldigas iela	
Planning data	2
Luminaire parts list	3
Photometric Results	4
3D Rendering	6
False Color Rendering	7
Valuation Fields	
Brauktuve	
Observer	
Observer 1	
Isolines (L)	8
Observer 2	
Isolines (L)	9
Kuldigas iela (zala zona 4.5m)	
Planning data	10
Luminaire parts list	11
Photometric Results	12
3D Rendering	14
False Color Rendering	15
Valuation Fields	
Brauktuve	
Observer	
Observer 1	
Isolines (L)	16
Observer 2	
Isolines (L)	17

SIA Gaismas Stils
www.gaismasstils.lv
Maskavas iela 12, Rīga
LV-1050, Latvija

Operator Edgars Svētiņš
Telephone +371 67276760
Fax +371 67797444
e-Mail edgars@gaismasstils.lv

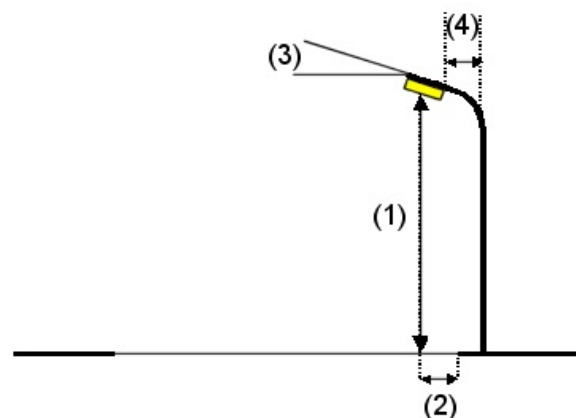
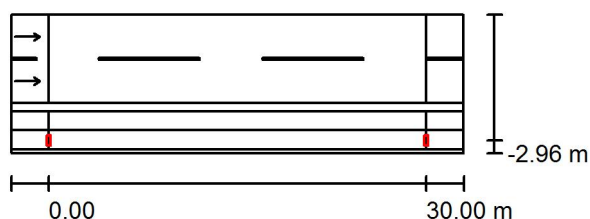
Kuldīgas iela / Planning data

Street Profile

Brauktuve	(Width: 7.000 m, Number of lanes: 2, tarmac: R3, q0: 0.070)
zaļā zona	(Width: 0.650 m)
Veloceliņš	(Width: 1.500 m)
ietve	(Width: 1.500 m)
zaļā zona	(Width: 0.300 m)

Light loss factor: 0.80

Luminaire Arrangements



Luminaire:	CREE XSPD02210E--K_24-Q8 XSPD - E - Type 210 - Q8
Luminous flux (Luminaire):	10340 lm
Luminous flux (Lamps):	11118 lm
Luminaire Wattage:	94.0 W
Arrangement:	Single row, bottom
Pole Distance:	30.000 m
Mounting Height (1):	8.100 m
Height:	8.000 m
Overhang (2):	-2.950 m
Boom Angle (3):	5.0 °
Boom Length (4):	0.991 m

Maximum luminous intensities
at 70°: 449 cd/klm
at 80°: 138 cd/klm
at 90°: 0.96 cd/klm

Any direction forming the specified angle from the downward vertical, with the luminaire installed for use.

No luminous intensities above 95°.

Arrangement complies with luminous intensity class G2.

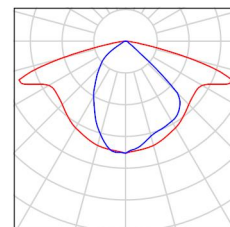
Arrangement complies with glare index class D.0.

SIA Gaismas Stils
www.gaismasstils.lv
Maskavas iela 12, Rīga
LV-1050, Latvija

Operator Edgars Svētiņš
Telephone +371 67276760
Fax +371 67797444
e-Mail edgars@gaismasstils.lv

Kuldigas iela / Luminaire parts list

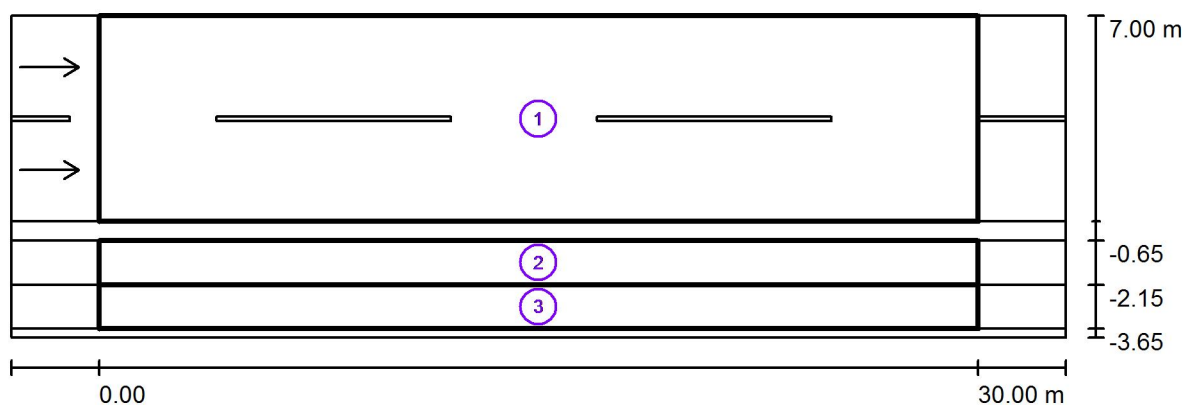
CREE XSPD02210E--K_24-Q8 XSPD - E - Type
210 - Q8
Article No.: XSPD02210E--K_24-Q8
Luminous flux (Luminaire): 10340 lm
Luminous flux (Lamps): 11118 lm
Luminaire Wattage: 94.0 W
Luminaire classification according to CIE: 100
CIE flux code: 48 81 97 100 93
Fitting: 1 x 5 LED MD-A Q8 3K 12V (Correction
Factor 1.000).



SIA Gaismas Stils
www.gaismasstils.lv
Maskavas iela 12, Rīga
LV-1050, Latvija

Operator Edgars Svētiņš
Telephone +371 67276760
Fax +371 67797444
e-Mail edgars@gaismasstils.lv

Kuldigas iela / Photometric Results



Light loss factor: 0.80

Scale 1:258

Calculation Field List

- 1 Brauktuve
Length: 30.000 m, Width: 7.000 m
Grid: 10 x 6 Points
Accompanying Street Elements: Brauktuve.
tarmac: R3, q0: 0.070
Selected Lighting Class: ME4b

(All lighting performance requirements are met.)

	L_{av} [cd/m ²]	U0	UI	TI [%]	SR
Calculated values:	0.75	0.46	0.70	14	0.92
Required values according to class:	≥ 0.75	≥ 0.40	≥ 0.50	≤ 15	≥ 0.50
Fulfilled/Not fulfilled:	✓	✓	✓	✓	✓

SIA Gaismas Stils
www.gaismasstils.lv
Maskavas iela 12, Rīga
LV-1050, Latvija

Operator Edgars Svētiņš
Telephone +371 67276760
Fax +371 67797444
e-Mail edgars@gaismasstils.lv

Kuldigas iela / Photometric Results

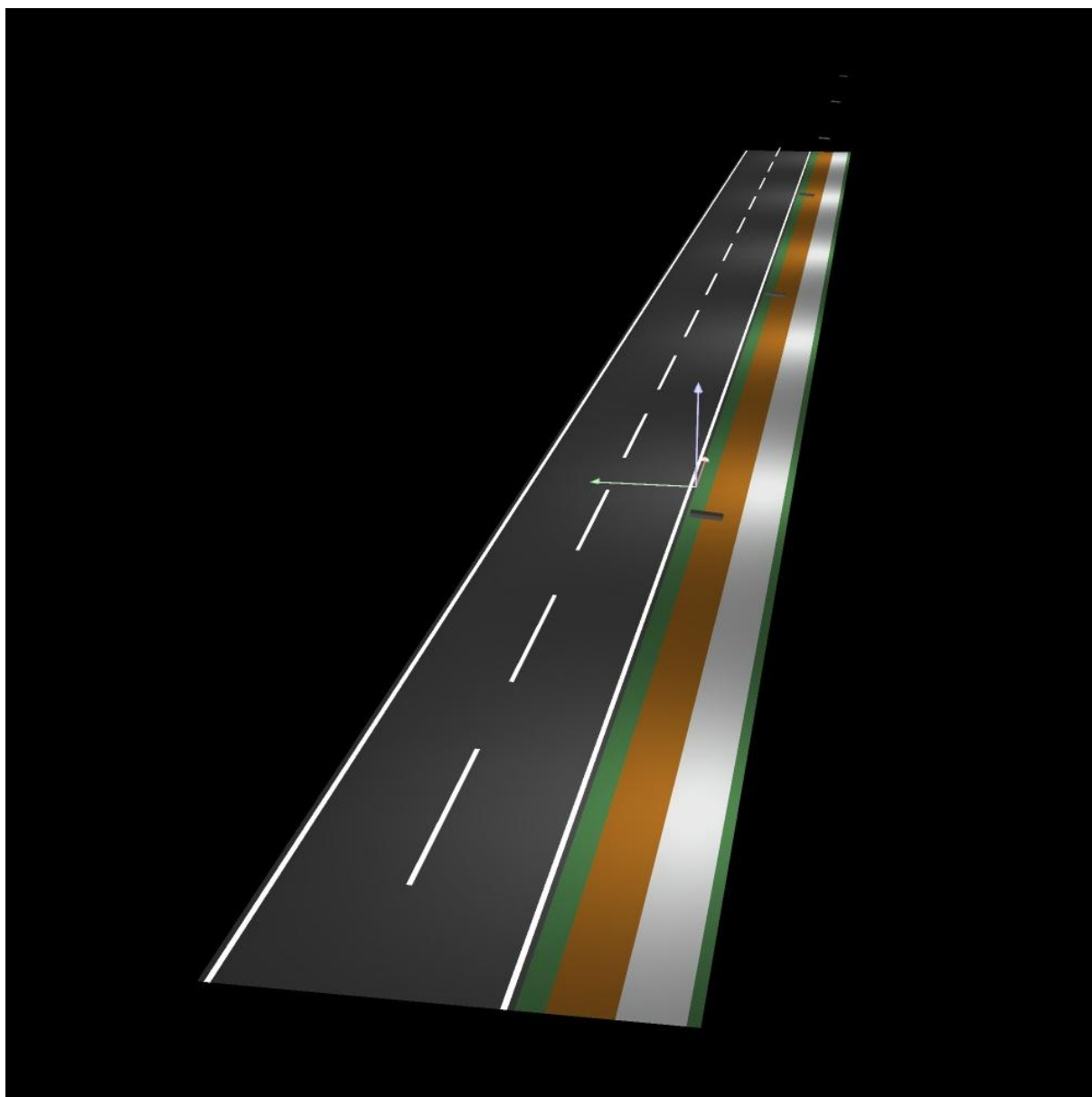
Calculation Field List

2	Veloceliņš			
	Length: 30.000 m, Width: 1.500 m			
	Grid: 10 x 3 Points			
	Accompanying Street Elements: Veloceliņš.			
	Selected Lighting Class: S1	(All lighting performance requirements are met.)		
	Calculated values:	E_{av} [lx]	E_{min} [lx]	
	Required values according to class:	22.13	8.72	
	Fulfilled/Not fulfilled:	≥ 15.00	≥ 5.00	
		✓	✓	
3	Ietve			
	Length: 30.000 m, Width: 1.500 m			
	Grid: 10 x 3 Points			
	Accompanying Street Elements: Ietve.			
	Selected Lighting Class: S1	(All lighting performance requirements are met.)		
	Calculated values:	E_{av} [lx]	E_{min} [lx]	
	Required values according to class:	22.33	8.10	
	Fulfilled/Not fulfilled:	≥ 15.00	≥ 5.00	
		✓	✓	

SIA Gaismas Stils
www.gaismasstils.lv
Maskavas iela 12, Rīga
LV-1050, Latvija

Operator Edgars Svētiņš
Telephone +371 67276760
Fax +371 67797444
e-Mail edgars@gaismasstils.lv

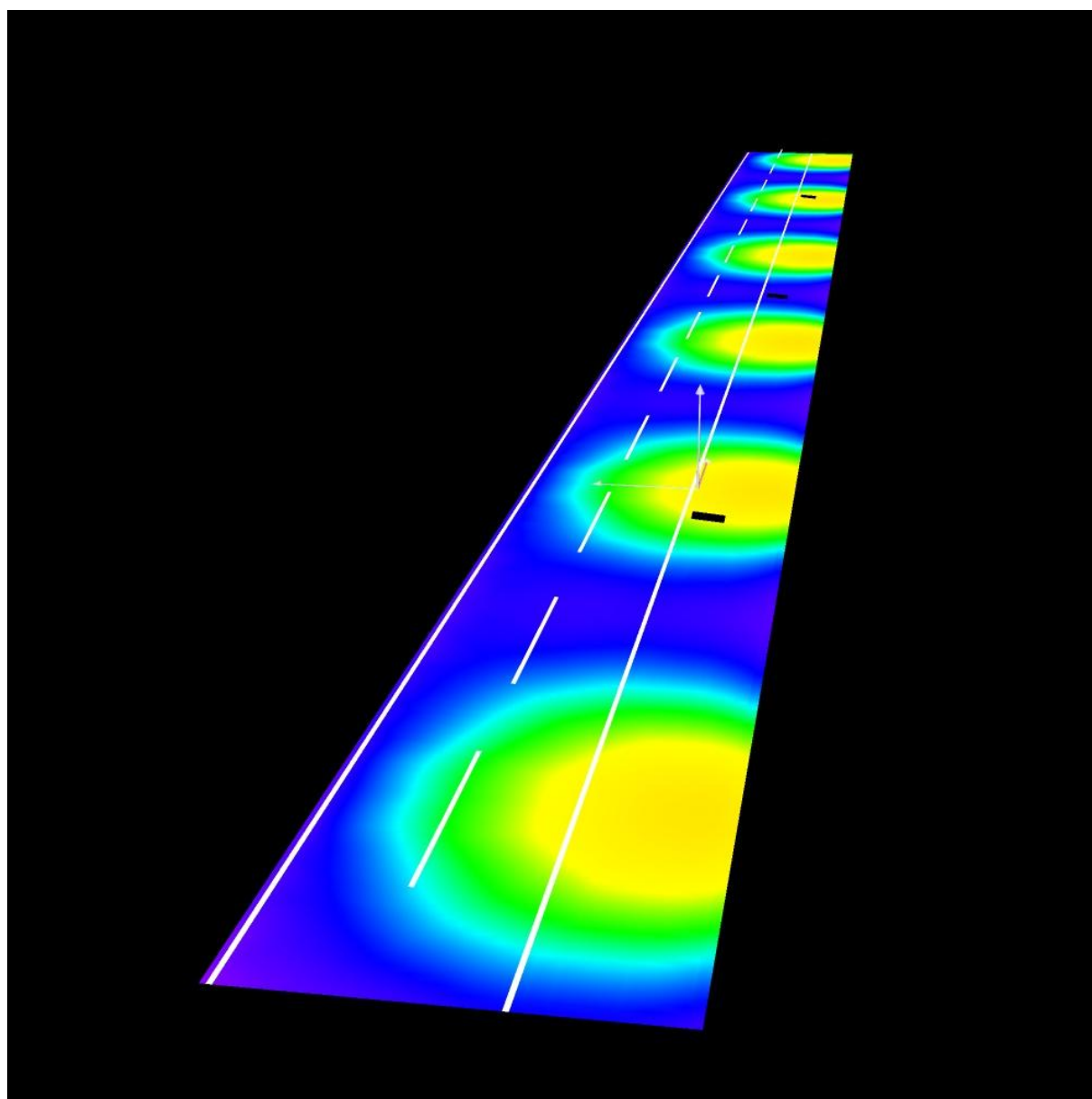
Kuldīgas iela / 3D Rendering



SIA Gaismas Stils
www.gaismasstils.lv
Maskavas iela 12, Rīga
LV-1050, Latvija

Operator Edgars Svētiņš
Telephone +371 67276760
Fax +371 67797444
e-Mail edgars@gaismasstils.lv

Kuldigas iela / False Color Rendering

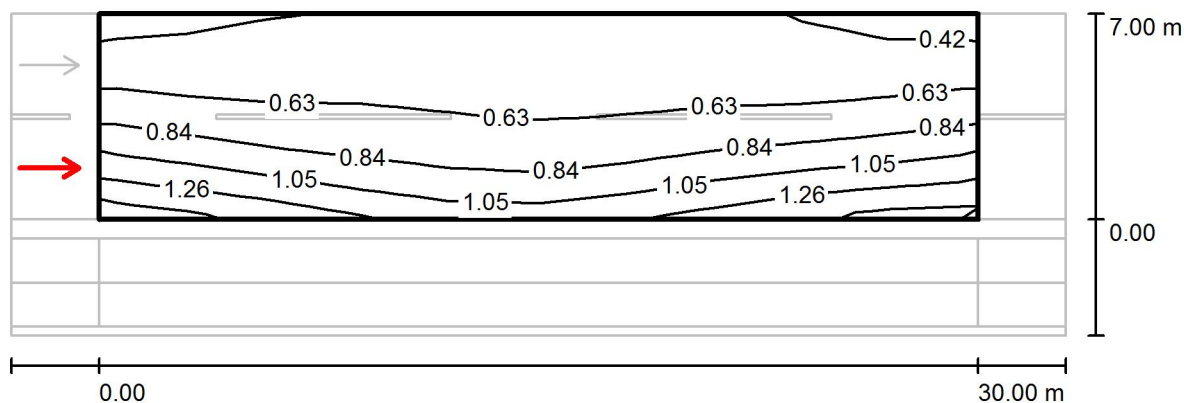


0 5 10 15 20 30 100 200 300 lx

SIA Gaismas Stils
www.gaismasstils.lv
Maskavas iela 12, Rīga
LV-1050, Latvija

Operator Edgars Svētiņš
Telephone +371 67276760
Fax +371 67797444
e-Mail edgars@gaismasstils.lv

Kuldigas iela / Brauktuve / Observer 1 / Isolines (L)



Values in Candela/m², Scale 1 : 258

Grid: 10 x 6 Points

Observer Position: (-60.000 m, 1.750 m, 1.500 m)

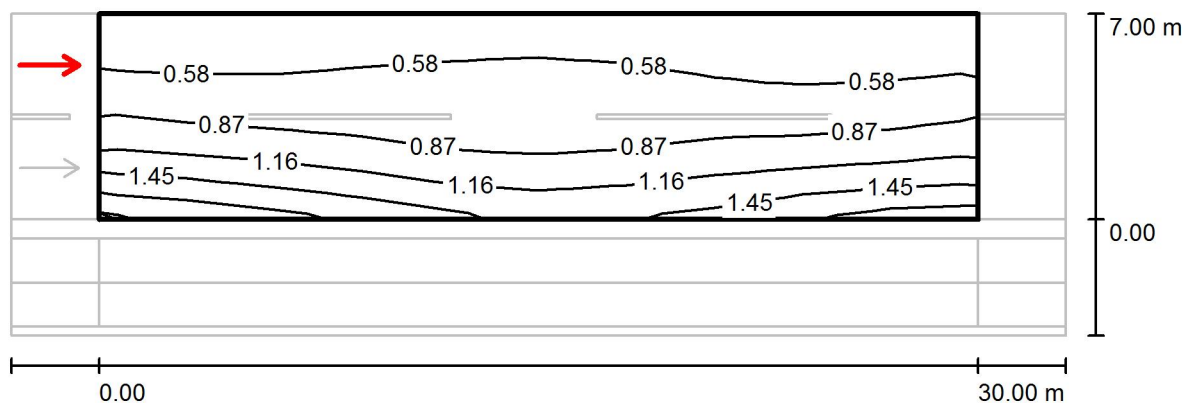
tarmac: R3, q0: 0.070

	L_{av} [cd/m ²]	U0	UI	TI [%]
Calculated values:	0.75	0.51	0.70	14
Required values according to class ME4b:	≥ 0.75	≥ 0.40	≥ 0.50	≤ 15
Fulfilled/Not fulfilled:	✓	✓	✓	✓

SIA Gaismas Stils
www.gaismasstils.lv
Maskavas iela 12, Rīga
LV-1050, Latvija

Operator Edgars Svētiņš
Telephone +371 67276760
Fax +371 67797444
e-Mail edgars@gaismasstils.lv

Kuldīgas iela / Brauktuve / Observer 2 / Isolines (L)



Values in Candela/m², Scale 1 : 258

Grid: 10 x 6 Points

Observer Position: (-60.000 m, 5.250 m, 1.500 m)

tarmac: R3, q0: 0.070

	L_{av} [cd/m²]	U0	UI	TI [%]
Calculated values:	0.86	0.46	0.81	7
Required values according to class ME4b:	≥ 0.75	≥ 0.40	≥ 0.50	≤ 15
Fulfilled/Not fulfilled:	✓	✓	✓	✓

SIA Gaismas Stils
www.gaismasstils.lv
Maskavas iela 12, Rīga
LV-1050, Latvija

Operator Edgars Svētiņš
Telephone +371 67276760
Fax +371 67797444
e-Mail edgars@gaismasstils.lv

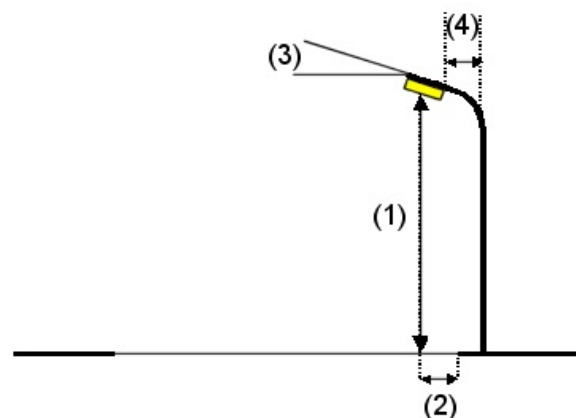
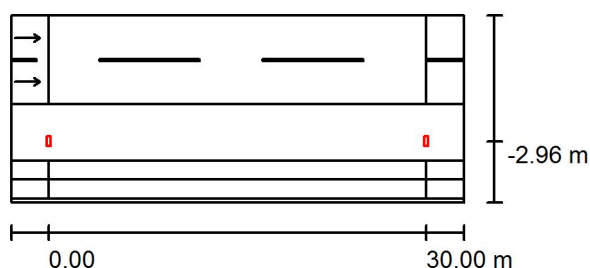
Kuldīgas iela (zala zona 4.5m) / Planning data

Street Profile

Brauktuve	(Width: 7.000 m, Number of lanes: 2, tarmac: R3, q0: 0.070)
zaļā zona	(Width: 4.500 m)
Veloceliņš	(Width: 1.500 m)
ietve	(Width: 1.500 m)
zaļā zona	(Width: 0.300 m)

Light loss factor: 0.80

Luminaire Arrangements



Luminaire:	CREE XSPD02210E--K_24-Q8 XSPD - E - Type 210 - Q8
Luminous flux (Luminaire):	10340 lm
Luminous flux (Lamps):	11118 lm
Luminaire Wattage:	94.0 W
Arrangement:	Single row, bottom
Pole Distance:	30.000 m
Mounting Height (1):	8.100 m
Height:	8.000 m
Overhang (2):	-2.950 m
Boom Angle (3):	5.0 °
Boom Length (4):	0.991 m

Maximum luminous intensities
at 70°: 449 cd/klm
at 80°: 138 cd/klm
at 90°: 0.96 cd/klm

Any direction forming the specified angle from the downward vertical, with the luminaire installed for use.

No luminous intensities above 95°.

Arrangement complies with luminous intensity class G2.

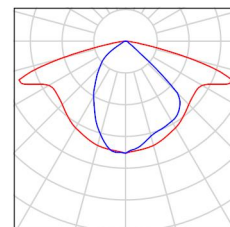
Arrangement complies with glare index class D.0.

SIA Gaismas Stils
www.gaismasstils.lv
Maskavas iela 12, Rīga
LV-1050, Latvija

Operator Edgars Svētiņš
Telephone +371 67276760
Fax +371 67797444
e-Mail edgars@gaismasstils.lv

Kuldigas iela (zala zona 4.5m) / Luminaire parts list

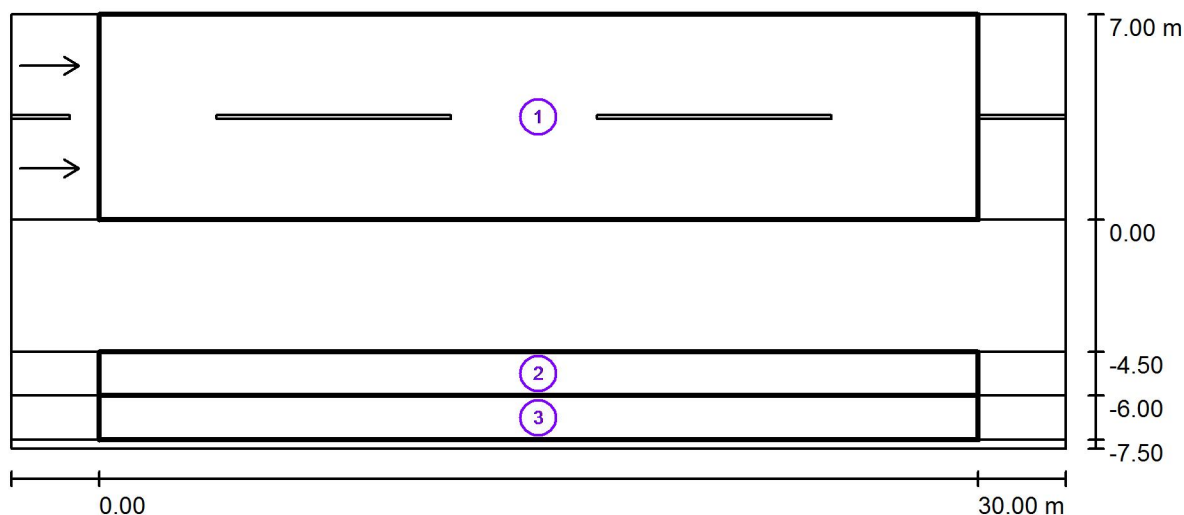
CREE XSPD02210E--K_24-Q8 XSPD - E - Type
210 - Q8
Article No.: XSPD02210E--K_24-Q8
Luminous flux (Luminaire): 10340 lm
Luminous flux (Lamps): 11118 lm
Luminaire Wattage: 94.0 W
Luminaire classification according to CIE: 100
CIE flux code: 48 81 97 100 93
Fitting: 1 x 5 LED MD-A Q8 3K 12V (Correction
Factor 1.000).



SIA Gaismas Stils
www.gaismasstils.lv
Maskavas iela 12, Rīga
LV-1050, Latvija

Operator Edgars Svētiņš
Telephone +371 67276760
Fax +371 67797444
e-Mail edgars@gaismasstils.lv

Kuldigas iela (zala zona 4.5m) / Photometric Results



Light loss factor: 0.80

Scale 1:258

Calculation Field List

- 1 Brauktuve
Length: 30.000 m, Width: 7.000 m
Grid: 10 x 6 Points
Accompanying Street Elements: Brauktuve.
tarmac: R3, q0: 0.070
Selected Lighting Class: ME4b

(All lighting performance requirements are met.)

	L_{av} [cd/m ²]	U0	UI	TI [%]	SR
Calculated values:	0.75	0.46	0.70	14	0.92
Required values according to class:	≥ 0.75	≥ 0.40	≥ 0.50	≤ 15	≥ 0.50
Fulfilled/Not fulfilled:	✓	✓	✓	✓	✓

SIA Gaismas Stils
www.gaismasstils.lv
Maskavas iela 12, Rīga
LV-1050, Latvija

Operator Edgars Svētiņš
Telephone +371 67276760
Fax +371 67797444
e-Mail edgars@gaismasstils.lv

Kuldigas iela (zala zona 4.5m) / Photometric Results

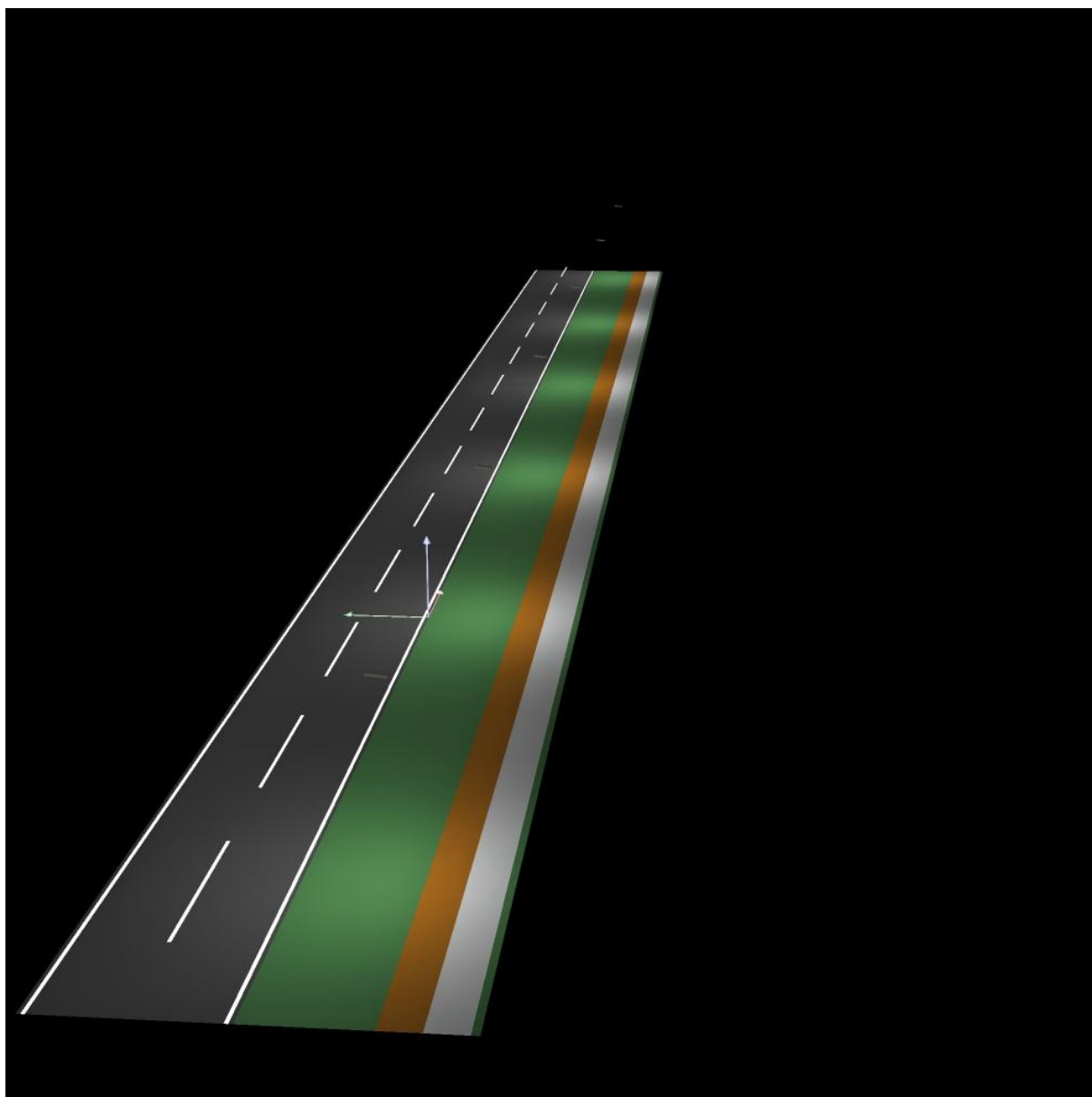
Calculation Field List

2	Veloceliņš			
	Length: 30.000 m, Width: 1.500 m			
	Grid: 10 x 3 Points			
	Accompanying Street Elements: Veloceliņš.			
	Selected Lighting Class: S1	(All lighting performance requirements are met.)		
	Calculated values:	E_{av} [lx]	E_{min} [lx]	
	Required values according to class:	15.30	5.43	
	Fulfilled/Not fulfilled:	≥ 15.00	≥ 5.00	
		✓	✓	
3	Ietve			
	Length: 30.000 m, Width: 1.500 m			
	Grid: 10 x 3 Points			
	Accompanying Street Elements: Ietve.			
	Selected Lighting Class: S2	(All lighting performance requirements are met.)		
	Calculated values:	E_{av} [lx]	E_{min} [lx]	
	Required values according to class:	10.05	3.78	
	Fulfilled/Not fulfilled:	≥ 10.00	≥ 3.00	
		✓	✓	

SIA Gaismas Stils
www.gaismasstils.lv
Maskavas iela 12, Rīga
LV-1050, Latvija

Operator Edgars Svētiņš
Telephone +371 67276760
Fax +371 67797444
e-Mail edgars@gaismasstils.lv

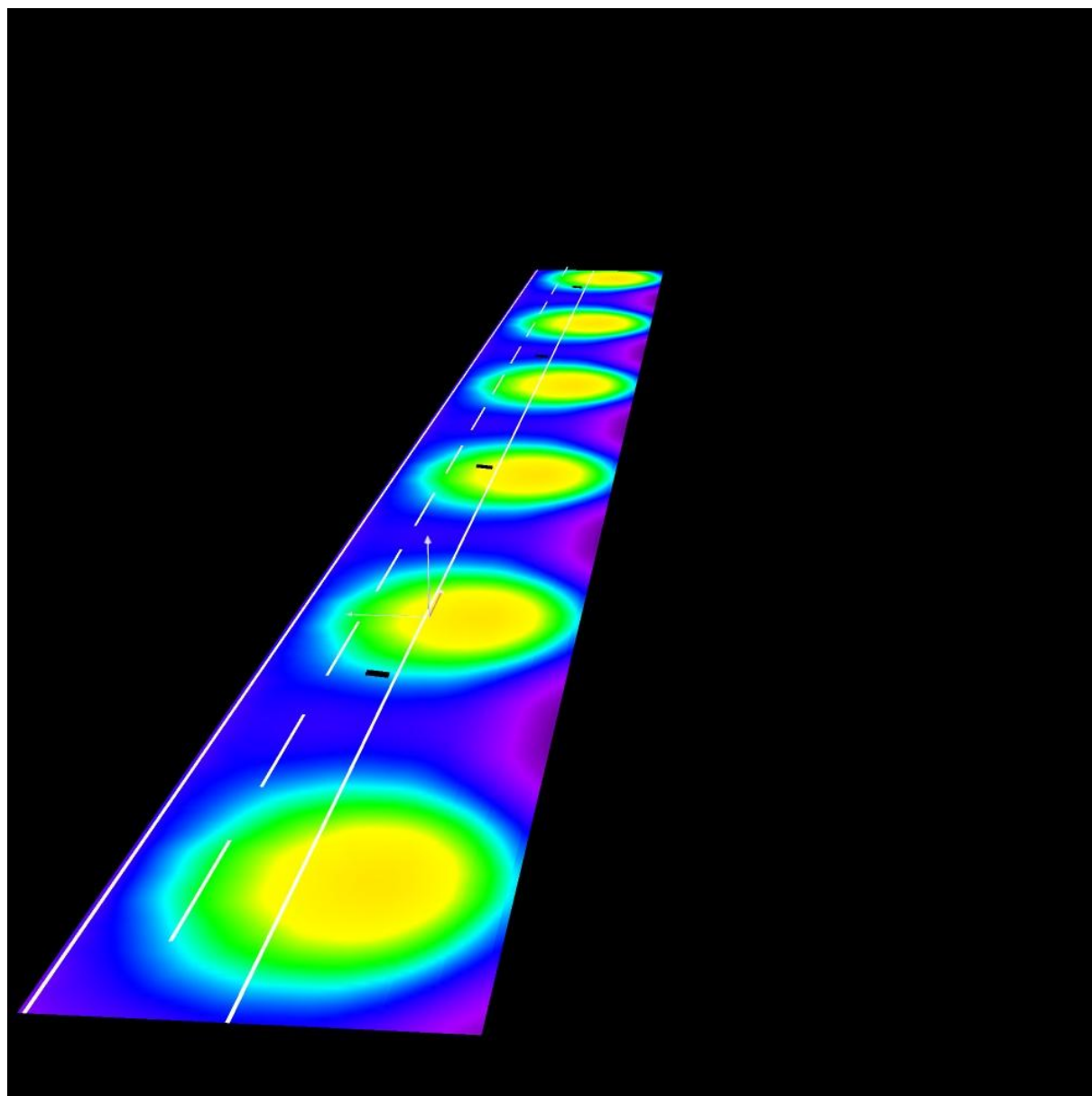
Kuldigas iela (zala zona 4.5m) / 3D Rendering



SIA Gaismas Stils
www.gaismasstils.lv
Maskavas iela 12, Rīga
LV-1050, Latvija

Operator Edgars Svētiņš
Telephone +371 67276760
Fax +371 67797444
e-Mail edgars@gaismasstils.lv

Kuldigas iela (zala zona 4.5m) / False Color Rendering

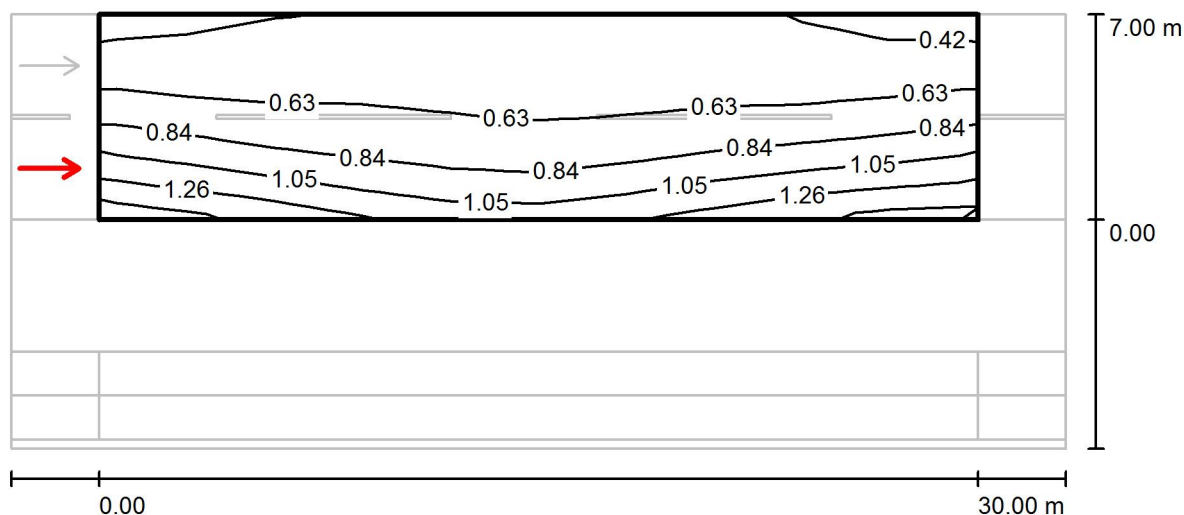


0 5 10 15 20 30 100 200 300 lx

SIA Gaismas Stils
www.gaismasstils.lv
Maskavas iela 12, Rīga
LV-1050, Latvija

Operator Edgars Svētiņš
Telephone +371 67276760
Fax +371 67797444
e-Mail edgars@gaismasstils.lv

Kuldīgas iela (zāla zona 4.5m) / Brauktuve / Observer 1 / Isolines (L)



Values in Candela/m², Scale 1 : 258

Grid: 10 x 6 Points

Observer Position: (-60.000 m, 1.750 m, 1.500 m)

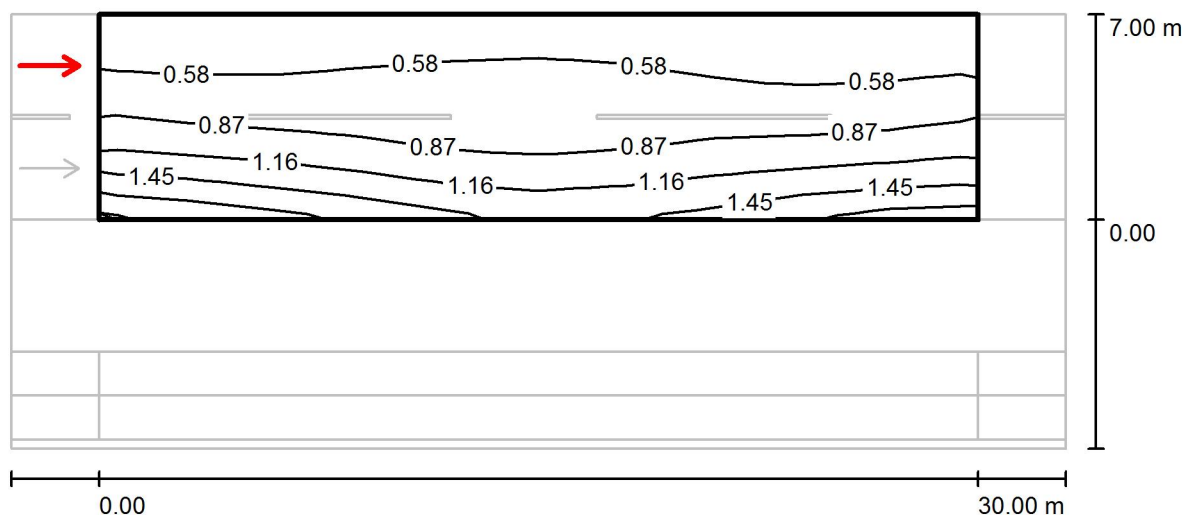
tarmac: R3, q0: 0.070

	L_{av} [cd/m ²]	U0	UI	TI [%]
Calculated values:	0.75	0.51	0.70	14
Required values according to class ME4b:	≥ 0.75	≥ 0.40	≥ 0.50	≤ 15
Fulfilled/Not fulfilled:	✓	✓	✓	✓

SIA Gaismas Stils
www.gaismasstils.lv
Maskavas iela 12, Rīga
LV-1050, Latvija

Operator Edgars Svētiņš
Telephone +371 67276760
Fax +371 67797444
e-Mail edgars@gaismasstils.lv

Kuldīgas iela (zāla zona 4.5m) / Brauktuve / Observer 2 / Isolines (L)



Values in Candela/m², Scale 1 : 258

Grid: 10 x 6 Points

Observer Position: (-60.000 m, 5.250 m, 1.500 m)

tarmac: R3, q0: 0.070

	L_{av} [cd/m²]	U0	UI	TI [%]
Calculated values:	0.86	0.46	0.81	7
Required values according to class ME4b:	≥ 0.75	≥ 0.40	≥ 0.50	≤ 15
Fulfilled/Not fulfilled:	✓	✓	✓	✓