

SIA Gaismas Stils
www.gaismasstils.lv
Maskavas iela 12, Rīga
LV-1050, Latvija

Operator Edgars Svētiņš
Telephone +371 67276760
Fax +371 67797444
e-Mail edgars@gaismasstils.lv

Apgaismojuma risinājumi salāgoti ar Durbes, Apļa un Rūpniecības ielu
būvprojektiem. Brauktuves gaismekļi paredzēti tāda paša dizaina (tips),
tikai ar savādākiem parametriem – tieši speciāli priekš Rāvas ielas. Mazie
gaismekļi paredzēti analogi (tai skaitā parametri) kā Durbes ielā.

Ravas iela / Planning data

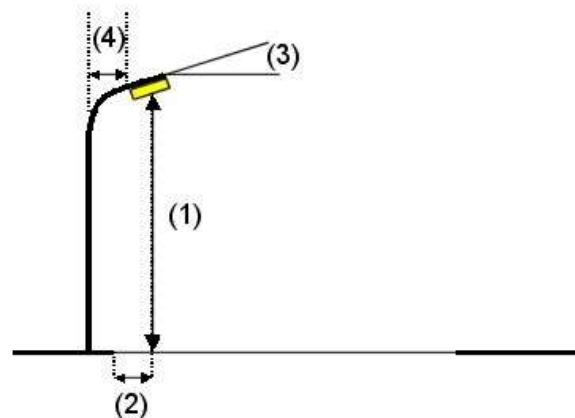
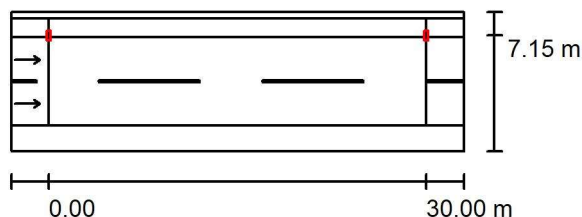
Street Profile

Zālājs	(Width: 0.500 m)
Gājēju ietve	(Width: 1.500 m)
Brauktuve	(Width: 7.000 m, Number of lanes: 2, tarmac: R3, q0: 0.070)
Zaļā zona	(Width: 2.000 m)

Posms (no Durbes ielas līdz iebrauktuvei uz Durbes 23),
kur tiek saglabāti esošie apgaismojuma balsti

Maintenance factor: 0.80

Luminaire Arrangements



Luminaire:	CREE XSPD02210E30K_24-Q8 XSPD - E - Type 210 - Q8
Luminous flux (Luminaire):	10340 lm
Luminous flux (Lamps):	11118 lm
Luminaire Wattage:	94.0 W
Arrangement:	Single row, top
Pole Distance:	30.000 m
Mounting Height (1):	8.100 m
Height:	8.000 m
Overhang (2):	-0.150 m
Boom Angle (3):	0.0 °
Boom Length (4):	2.000 m

Maximum luminous intensities
at 70°: 437 cd/klm
at 80°: 282 cd/klm
at 90°: 12 cd/klm
Any direction forming the specified angle from the downward vertical, with the luminaire installed for use.

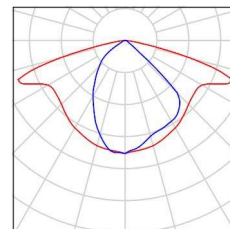
Arrangement complies with glare index class D.0.

SIA Gaismas Stils
www.gaismasstils.lv
Maskavas iela 12, Rīga
LV-1050, Latvija

Operator Edgars Svētiņš
Telephone +371 67276760
Fax +371 67797444
e-Mail edgars@gaismasstils.lv

Ravas iela / Luminaire parts list

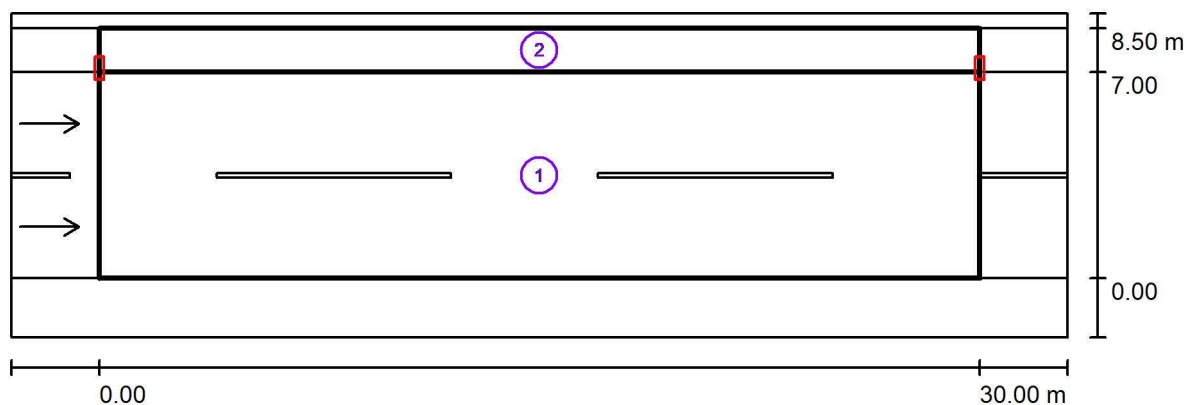
CREE XSPD02210E30K_24-Q8 XSPD - E - Type
210 - Q8
Article No.: XSPD02210E30K_24-Q8
Luminous flux (Luminaire): 10340 lm
Luminous flux (Lamps): 11118 lm
Luminaire Wattage: 94.0 W
Luminaire classification according to CIE: 100
CIE flux code: 48 81 97 100 93
Fitting: 1 x 5 LED MD-A Q8 3K 12V (Correction
Factor 1.000).



SIA Gaismas Stils
www.gaismasstils.lv
Maskavas iela 12, Rīga
LV-1050, Latvija

Operator Edgars Svētiņš
Telephone +371 67276760
Fax +371 67797444
e-Mail edgars@gaismasstils.lv

Ravas iela / Photometric Results



Maintenance factor: 0.80

Scale 1:258

Calculation Field List

- 1 Brauktuve
Length: 30.000 m, Width: 7.000 m
Grid: 10 x 6 Points
Accompanying Street Elements: Brauktuve.
tarmac: R3, q0: 0.070
Selected Lighting Class: ME4b

(All lighting performance requirements are met.)

	L_{av} [cd/m ²]	U0	UI	TI [%]	SR
Calculated values:	1.07	0.46	0.63	12	0.65
Required values according to class:	≥ 0.75	≥ 0.40	≥ 0.50	≤ 15	≥ 0.50
Fulfilled/Not fulfilled:	✓	✓	✓	✓	✓

SIA Gaismas Stils
www.gaismasstils.lv
Maskavas iela 12, Rīga
LV-1050, Latvija

Operator Edgars Svētiņš
Telephone +371 67276760
Fax +371 67797444
e-Mail edgars@gaismasstils.lv

Ravas iela / Photometric Results

Calculation Field List

- 2 Gājēju ietve
Length: 30,000 m, Width: 1,500 m
Grid: 10 x 3 Points
Accompanying Street Elements: Gājēju ietve.
Selected Lighting Class: S1 (All lighting performance requirements are met.)

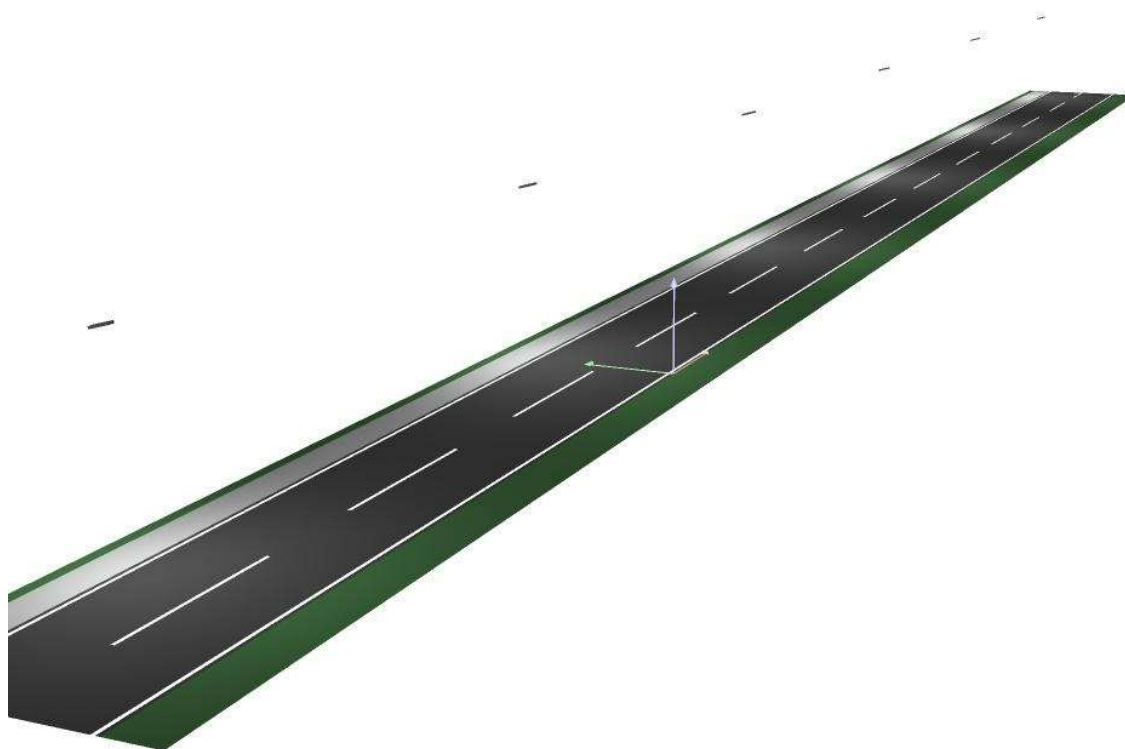
	E_{av} [lx]	E_{min} [lx]
Calculated values:	17.25	5.94
Required values according to class:	≥ 15.00	≥ 5.00
Fulfilled/Not fulfilled:	✓	✓



SIA Gaismas Stils
www.gaismasstils.lv
Maskavas iela 12, Rīga
LV-1050, Latvija

Operator Edgars Svētiņš
Telephone +371 67276760
Fax +371 67797444
e-Mail edgars@gaismasstils.lv

Ravas iela / 3D Rendering

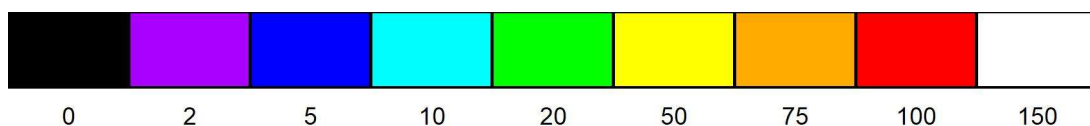
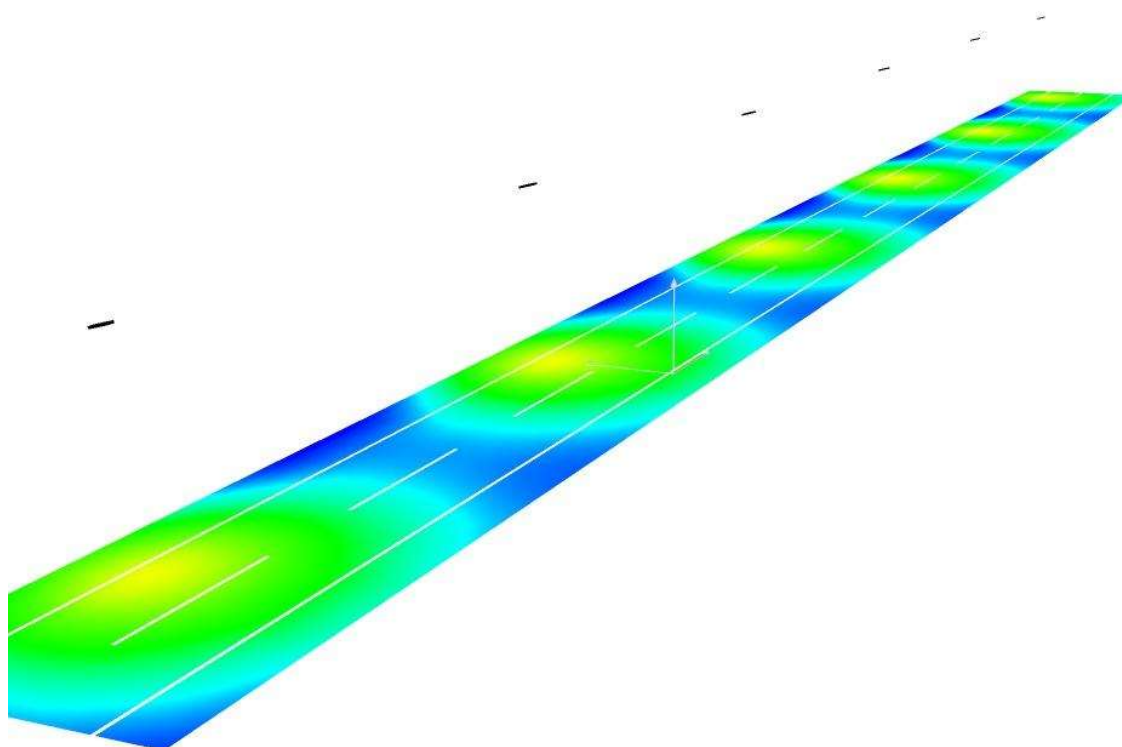




SIA Gaismas Stils
www.gaismasstils.lv
Maskavas iela 12, Rīga
LV-1050, Latvija

Operator Edgars Svētiņš
Telephone +371 67276760
Fax +371 67797444
e-Mail edgars@gaismasstils.lv

Ravas iela / False Colour Rendering

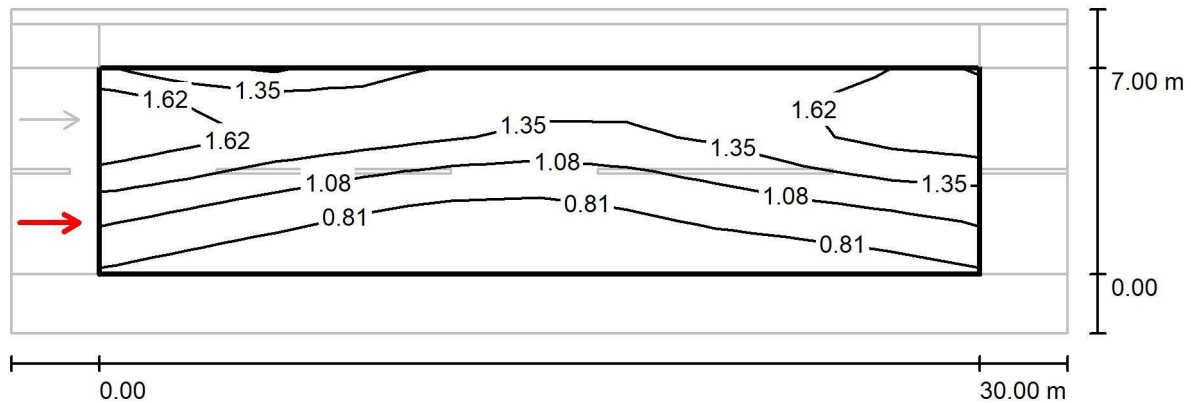


lx

SIA Gaismas Stils
www.gaismasstils.lv
Maskavas iela 12, Rīga
LV-1050, Latvija

Operator Edgars Svētiņš
Telephone +371 67276760
Fax +371 67797444
e-Mail edgars@gaismasstils.lv

Ravas iela / Brauktuve / Observer 1 / Isolines (L)



Values in Candela/m², Scale 1 : 258

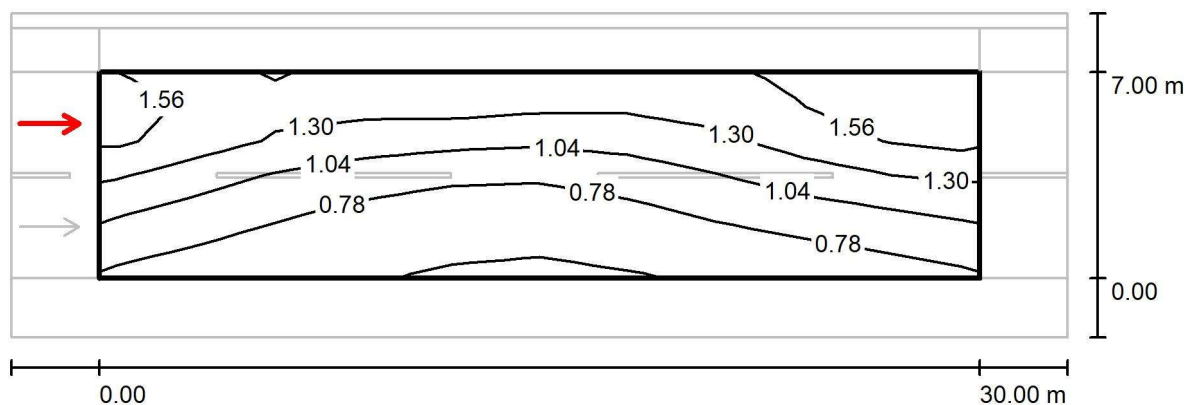
Grid: 10 x 6 Points
Observer Position: (-60.000 m, 1.750 m, 1.500 m)
tarmac: R3, q0: 0.070

	L_{av} [cd/m ²]	U0	UI	TI [%]
Calculated values:	1.18	0.46	0.63	9
Required values according to class ME4b:	≥ 0.75	≥ 0.40	≥ 0.50	≤ 15
Fulfilled/Not fulfilled:	✓	✓	✓	✓

SIA Gaismas Stils
www.gaismasstils.lv
Maskavas iela 12, Rīga
LV-1050, Latvija

Operator Edgars Svētiņš
Telephone +371 67276760
Fax +371 67797444
e-Mail edgars@gaismasstils.lv

Ravas iela / Brauktuve / Observer 2 / Isolines (L)



Values in Candela/m², Scale 1 : 258

Grid: 10 x 6 Points
Observer Position: (-60.000 m, 5.250 m, 1.500 m)
tarmac: R3, q0: 0,070

	L_{av} [cd/m²]	U0	UI	TI [%]
Calculated values:	1.07	0.47	0.69	12
Required values according to class ME4b:	≥ 0.75	≥ 0.40	≥ 0.50	≤ 15
Fulfilled/Not fulfilled:	✓	✓	✓	✓

SIA Gaismas Stils
www.gaismasstils.lv
Maskavas iela 12, Rīga
LV-1050, Latvija

Operator Edgars Svētiņš
Telephone +371 67276760
Fax +371 67797444
e-Mail edgars@gaismasstils.lv

Posms no Lāčplēša ielas līdz iebrauktuvei uz Durbes 23

Standarta risinājums

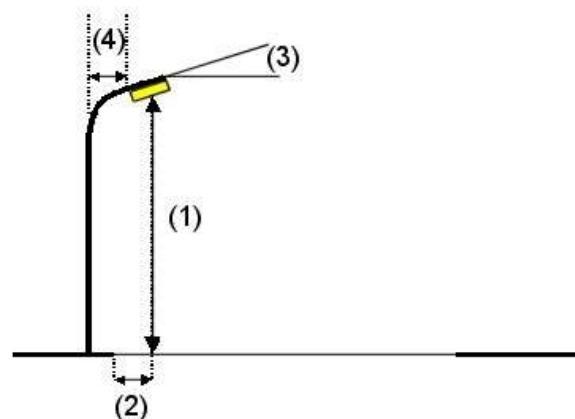
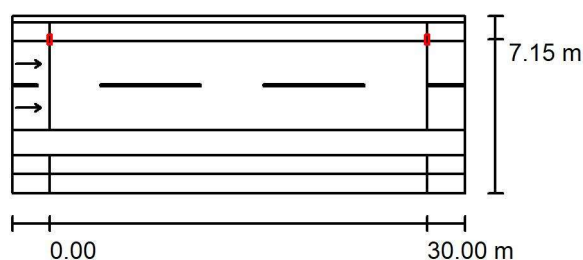
Ravas iela (posms ar veloceļu) / Planning data

Street Profile

Zālājs	(Width: 0.500 m)
Gājēju ietve	(Width: 1.500 m)
Brauktuve	(Width: 7.000 m, Number of lanes: 2, tarmac: R3, q0: 0.070)
Zaļā zona	(Width: 2.000 m)
Veloceļš	(Width: 1.500 m)
Gājēju ietve	(Width: 1.500 m)

Maintenance factor: 0.80

Luminaire Arrangements



Luminaire:	CREE XSPD02210E30K_24-Q8 XSPD - E - Type 210 - Q8
Luminous flux (Luminaire):	10340 lm
Luminous flux (Lamps):	11118 lm
Luminaire Wattage:	94.0 W
Arrangement:	Single row, top
Pole Distance:	30.000 m
Mounting Height (1):	8.100 m
Height:	8.000 m
Overhang (2):	-0.150 m
Boom Angle (3):	0.0 °
Boom Length (4):	2.000 m

Maximum luminous intensities	
at 70°:	437 cd/klm
at 80°:	282 cd/klm
at 90°:	12 cd/klm

Any direction forming the specified angle from the downward vertical, with the luminaire installed for use.

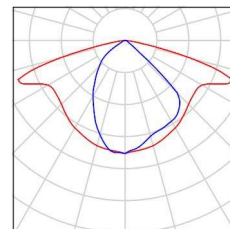
Arrangement complies with glare index class D.0.

SIA Gaismas Stils
www.gaismasstils.lv
Maskavas iela 12, Rīga
LV-1050, Latvija

Operator Edgars Svētiņš
Telephone +371 67276760
Fax +371 67797444
e-Mail edgars@gaismasstils.lv

Ravas iela (posms ar veloceliņu) / Luminaire parts list

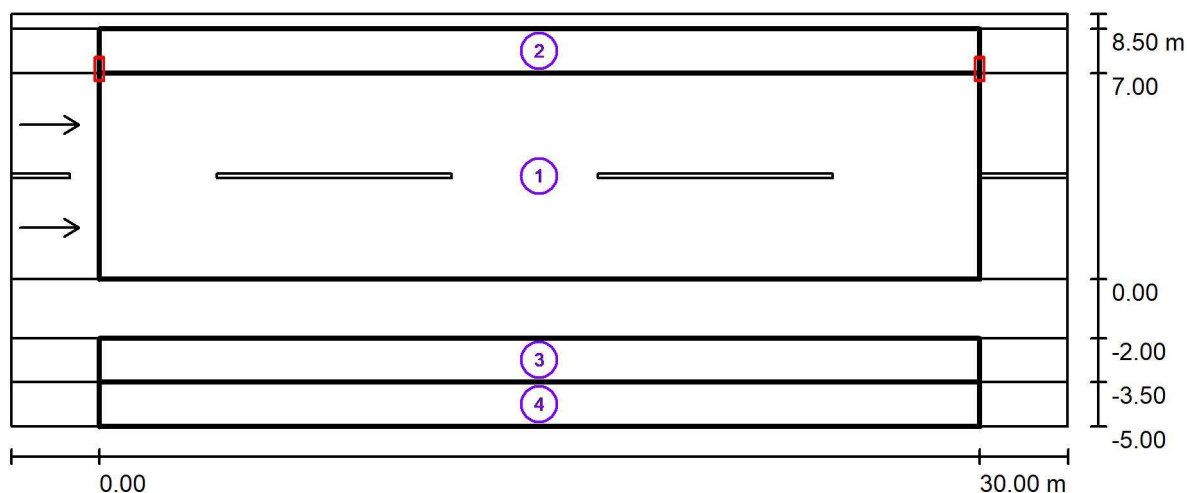
CREE XSPD02210E30K_24-Q8 XSPD - E - Type
210 - Q8
Article No.: XSPD02210E30K_24-Q8
Luminous flux (Luminaire): 10340 lm
Luminous flux (Lamps): 11118 lm
Luminaire Wattage: 94.0 W
Luminaire classification according to CIE: 100
CIE flux code: 48 81 97 100 93
Fitting: 1 x 5 LED MD-A Q8 3K 12V (Correction
Factor 1.000).



SIA Gaismas Stils
www.gaismasstils.lv
Maskavas iela 12, Rīga
LV-1050, Latvija

Operator Edgars Svētiņš
Telephone +371 67276760
Fax +371 67797444
e-Mail edgars@gaismasstils.lv

Ravas iela (posms ar veloceliņu) / Photometric Results



Maintenance factor: 0.80

Scale 1:258

Calculation Field List

- 1 Brauktuve
Length: 30.000 m, Width: 7.000 m
Grid: 10 x 6 Points
Accompanying Street Elements: Brauktuve.
tarmac: R3, q0: 0.070
Selected Lighting Class: ME4b

(All lighting performance requirements are met.)

	L_{av} [cd/m ²]	U0	UI	TI [%]	SR
Calculated values:	1.07	0.46	0.63	12	0.65
Required values according to class:	≥ 0.75	≥ 0.40	≥ 0.50	≤ 15	≥ 0.50
Fulfilled/Not fulfilled:	✓	✓	✓	✓	✓

SIA Gaismas Stils
www.gaismasstils.lv
Maskavas iela 12, Rīga
LV-1050, Latvija

Operator Edgars Svētiņš
Telephone +371 67276760
Fax +371 67797444
e-Mail edgars@gaismasstils.lv

Ravas iela (posms ar veloceļu) / Photometric Results

Calculation Field List

2 Gājēju ietve

Length: 30.000 m, Width: 1.500 m

Grid: 10 x 3 Points

Accompanying Street Elements: Gājēju ietve.

Selected Lighting Class: S1 (All lighting performance requirements are met.)

Calculated values:

Required values according to class:

Fulfilled/Not fulfilled:

E_{av} [lx]

17.25

≥ 15.00



E_{min} [lx]

5.94

≥ 5.00



3 Veloceļš

Length: 30.000 m, Width: 1.500 m

Grid: 10 x 3 Points

Accompanying Street Elements: Veloceļš.

Selected Lighting Class: S3 (All lighting performance requirements are met.)

Calculated values:

Required values according to class:

Fulfilled/Not fulfilled:

E_{av} [lx]

9.02

≥ 7.50



E_{min} [lx]

6.78

≥ 1.50



4 Gājēju ietve

Length: 30.000 m, Width: 1.500 m

Grid: 10 x 3 Points

Accompanying Street Elements: Gājēju ietve.

Selected Lighting Class: S3 (All lighting performance requirements are met.)

Calculated values:

Required values according to class:

Fulfilled/Not fulfilled:

E_{av} [lx]

7.58

≥ 7.50



E_{min} [lx]

6.70

≥ 1.50

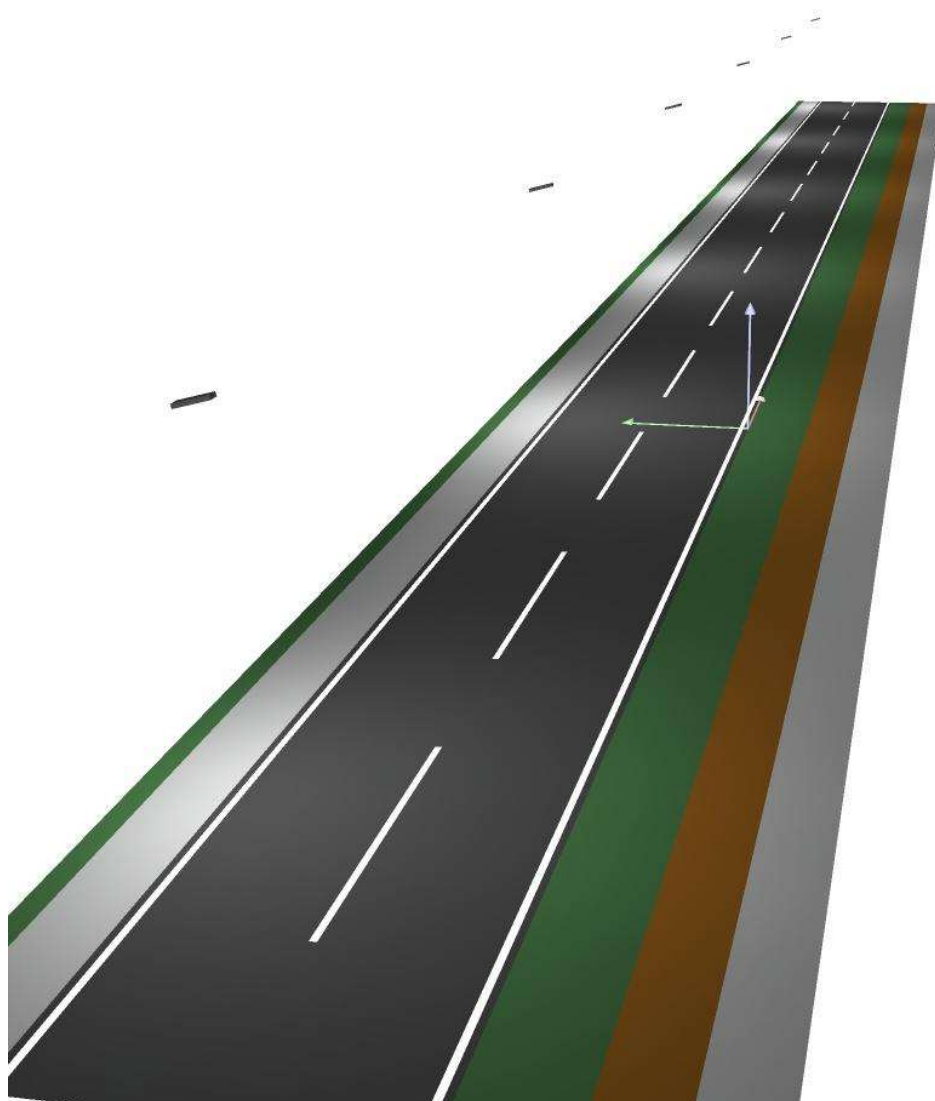




SIA Gaismas Stils
www.gaismasstils.lv
Maskavas iela 12, Rīga
LV-1050, Latvija

Operator Edgars Svētiņš
Telephone +371 67276760
Fax +371 67797444
e-Mail edgars@gaismasstils.lv

Ravas iela (posms ar veloceļu) / 3D Rendering

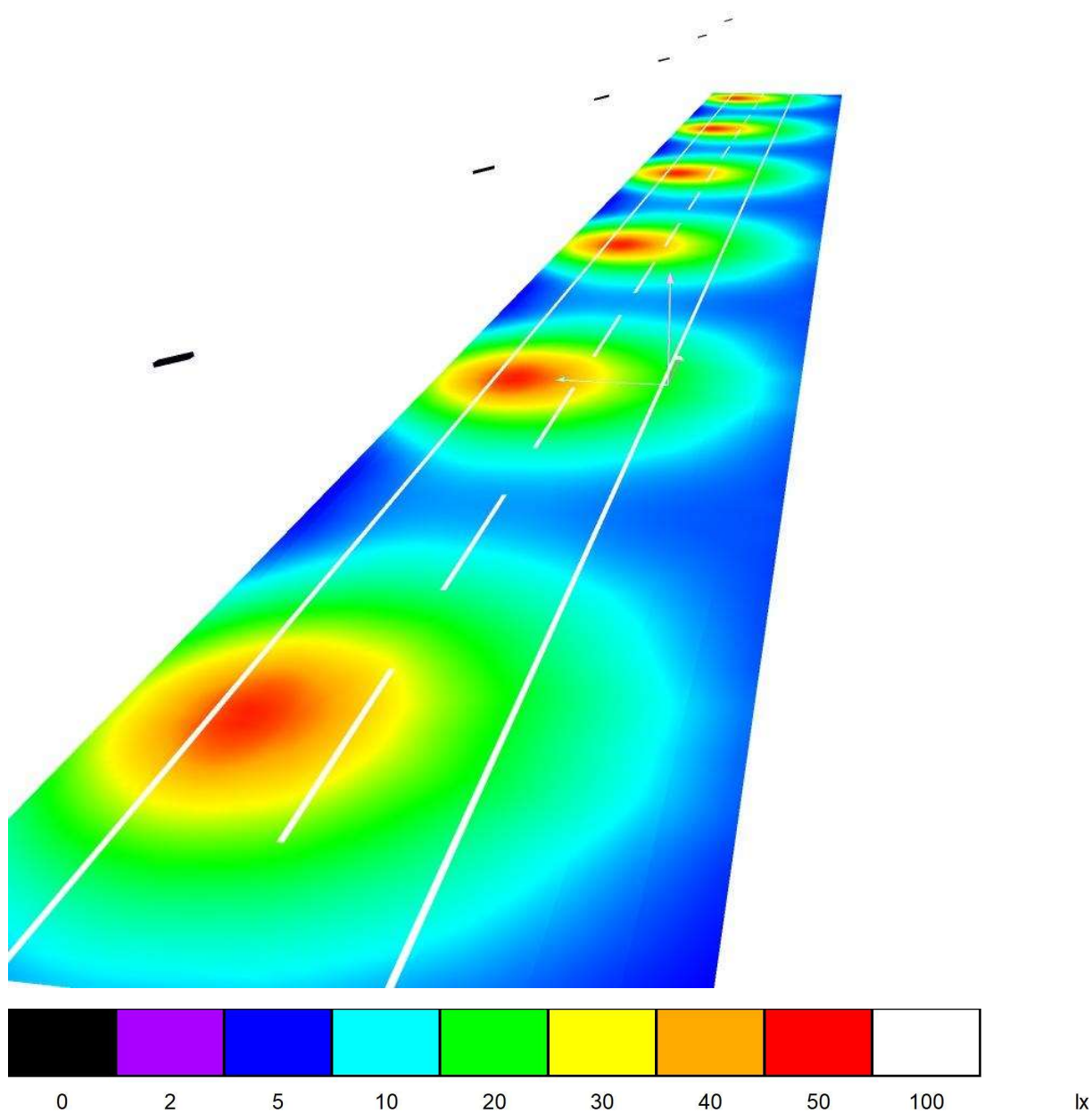




SIA Gaismas Stils
www.gaismasstils.lv
Maskavas iela 12, Rīga
LV-1050, Latvija

Operator Edgars Svētiņš
Telephone +371 67276760
Fax +371 67797444
e-Mail edgars@gaismasstils.lv

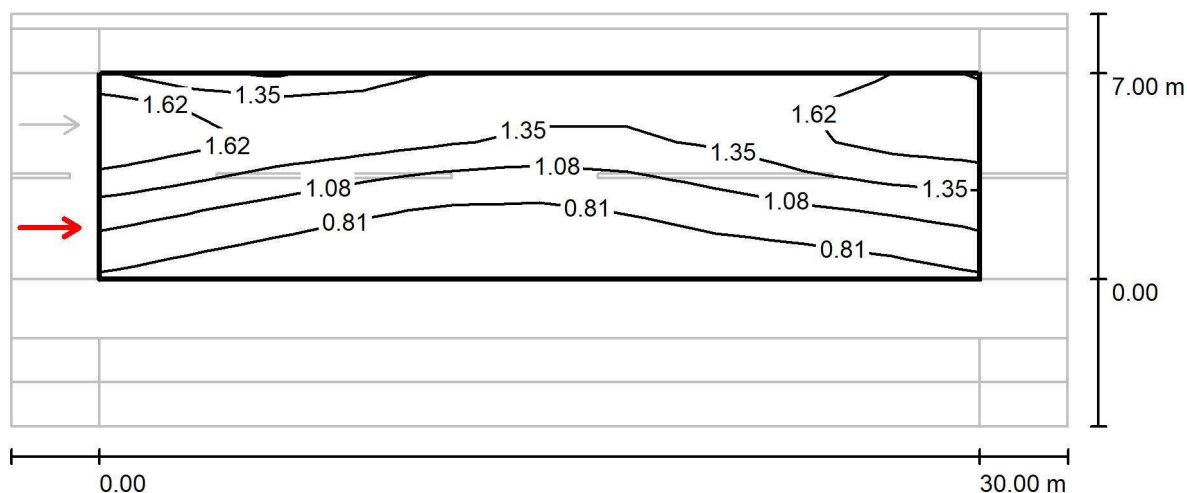
Ravas iela (posms ar veloseliņu) / False Colour Rendering



SIA Gaismas Stils
www.gaismasstils.lv
Maskavas iela 12, Rīga
LV-1050, Latvija

Operator Edgars Svētiņš
Telephone +371 67276760
Fax +371 67797444
e-Mail edgars@gaismasstils.lv

Ravas iela (posms ar veloceliņu) / Brauktuve / Observer 1 / Isolines (L)



Values in Candela/m², Scale 1 : 258

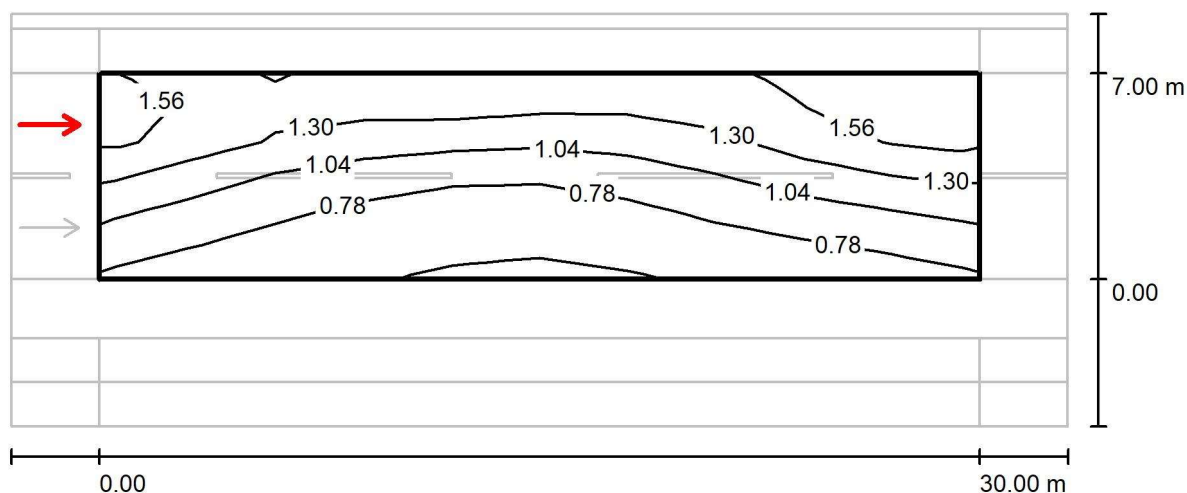
Grid: 10 x 6 Points
Observer Position: (-60.000 m, 1.750 m, 1.500 m)
tarmac: R3, q0: 0.070

	L_{av} [cd/m ²]	U0	UI	TI [%]
Calculated values:	1.18	0.46	0.63	9
Required values according to class ME4b:	≥ 0.75	≥ 0.40	≥ 0.50	≤ 15
Fulfilled/Not fulfilled:	✓	✓	✓	✓

SIA Gaismas Stils
www.gaismasstils.lv
Maskavas iela 12, Rīga
LV-1050, Latvija

Operator Edgars Svētiņš
Telephone +371 67276760
Fax +371 67797444
e-Mail edgars@gaismasstils.lv

Ravas iela (posms ar veloceliņu) / Brauktuve / Observer 2 / Isolines (L)



Values in Candela/m², Scale 1 : 258

Grid: 10 x 6 Points
Observer Position: (-60.000 m, 5.250 m, 1.500 m)
tarmac: R3, q0: 0.070

	L_{av} [cd/m ²]	U0	UI	TI [%]
Calculated values:	1.07	0.47	0.69	12
Required values according to class ME4b:	≥ 0.75	≥ 0.40	≥ 0.50	≤ 15
Fulfilled/Not fulfilled:	✓	✓	✓	✓

SIA Gaismas Stils
www.gaismasstils.lv
Maskavas iela 12, Rīga
LV-1050, Latvija

Operator Edgars Svētiņš
Telephone +371 67276760
Fax +371 67797444
e-Mail edgars@gaismasstils.lv

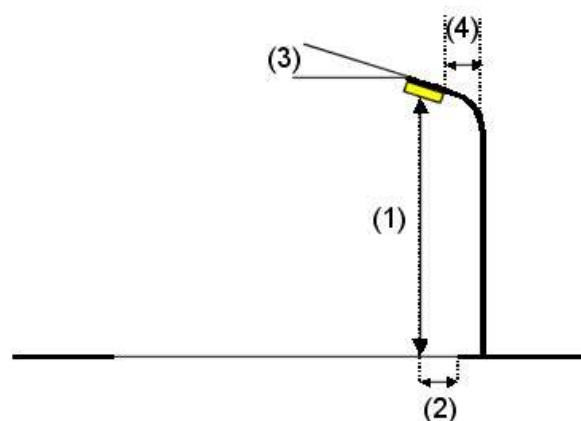
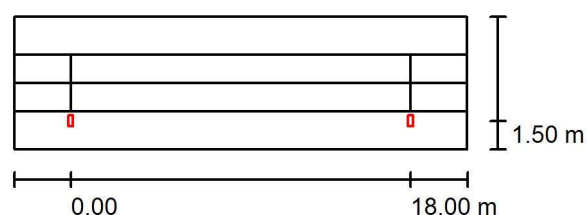
Veloceliņš / Planning data

Street Profile

Zaļā zona	(Width: 2,000 m)
Veloceļš	(Width: 1,500 m)
Gājēju ietve	(Width: 1,500 m)
Zaļā zona	(Width: 2,000 m)

Maintenance factor: 0.80

Luminaire Arrangements



Luminaire:	CREE XSPM02210A30K_24-Q1 XSPM - A - Type 210 - Q1
Luminous flux (Luminaire):	1866 lm
Luminous flux (Lamps):	1948 lm
Luminaire Wattage:	16.0 W
Arrangement:	Single row, bottom
Pole Distance:	18.000 m
Mounting Height (1):	4.126 m
Height:	4.000 m
Overhang (2):	1.500 m
Boom Angle (3):	0.0 °
Boom Length (4):	0.000 m

Maximum luminous intensities

at 70°:	677 cd/klm
at 80°:	167 cd/klm
at 90°:	0.00 cd/klm

Any direction forming the specified angle from the downward vertical, with the luminaire installed for use.

No luminous intensities above 90°.

Arrangement complies with luminous intensity class G1.

Arrangement complies with glare index class D.4.

SIA Gaismas Stils
www.gaismasstils.lv
Maskavas iela 12, Rīga
LV-1050, Latvija

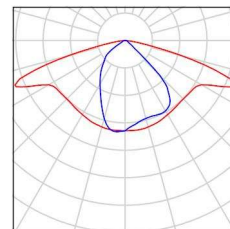
Operator Edgars Svētiņš
Telephone +371 67276760
Fax +371 67797444
e-Mail edgars@gaismasstils.lv

Velocliņa posms, kur tas ir atdalīts no brauktuves ar platu zaļo zonu

Zemais apgaismojuma stabs

Velocliņš / Luminaire parts list

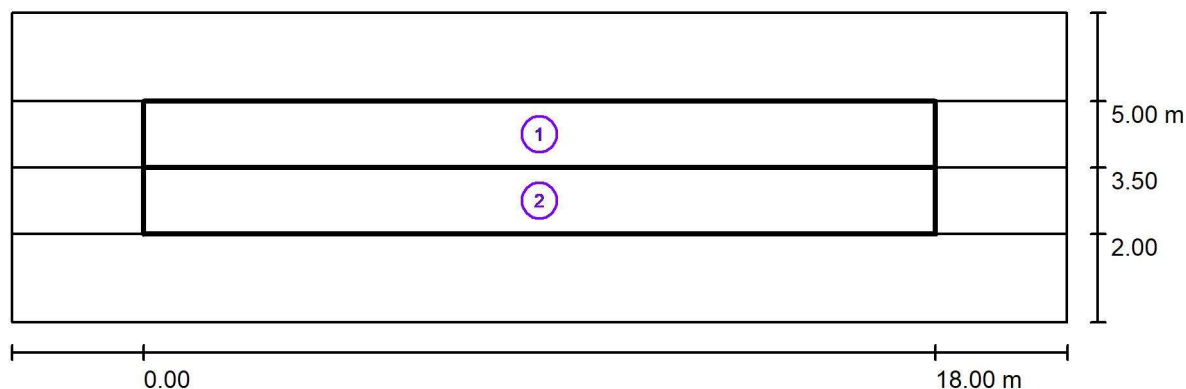
CREE XSPM02210A30K_24-Q1 XSPM - A -
Type 210 - Q1
Article No.: XSPM02210A30K_24-Q1
Luminous flux (Luminaire): 1866 lm
Luminous flux (Lamps): 1948 lm
Luminaire Wattage: 16.0 W
Luminaire classification according to CIE: 100
CIE flux code: 45 78 97 100 96
Fitting: 1 x 3 LED MD-A Q1 3K (Correction Factor
1.000).



SIA Gaismas Stils
www.gaismasstils.lv
Maskavas iela 12, Rīga
LV-1050, Latvija

Operator Edgars Svētiņš
Telephone +371 67276760
Fax +371 67797444
e-Mail edgars@gaismasstils.lv

Veloceliņš / Photometric Results



Maintenance factor: 0.80

Scale 1:172

Calculation Field List

- 1 Veloceliņš
Length: 18.000 m, Width: 1.500 m
Grid: 10 x 3 Points
Accompanying Street Elements: Veloceliņš.
Selected Lighting Class: S2 (All lighting performance requirements are met.)

	E_{av} [lx]	E_{min} [lx]
Calculated values:	10.58	7.38
Required values according to class:	≥ 10.00	≥ 3.00
Fulfilled/Not fulfilled:	✓	✓

SIA Gaismas Stils
www.gaismasstils.lv
Maskavas iela 12, Rīga
LV-1050, Latvija

Operator Edgars Svētiņš
Telephone +371 67276760
Fax +371 67797444
e-Mail edgars@gaismasstils.lv

Veloceliņš / Photometric Results

Calculation Field List

- 2 Gājēju ietve
Length: 18,000 m, Width: 1,500 m
Grid: 10 x 3 Points
Accompanying Street Elements: Gājēju ietve.
Selected Lighting Class: S2 (All lighting performance requirements are met.)

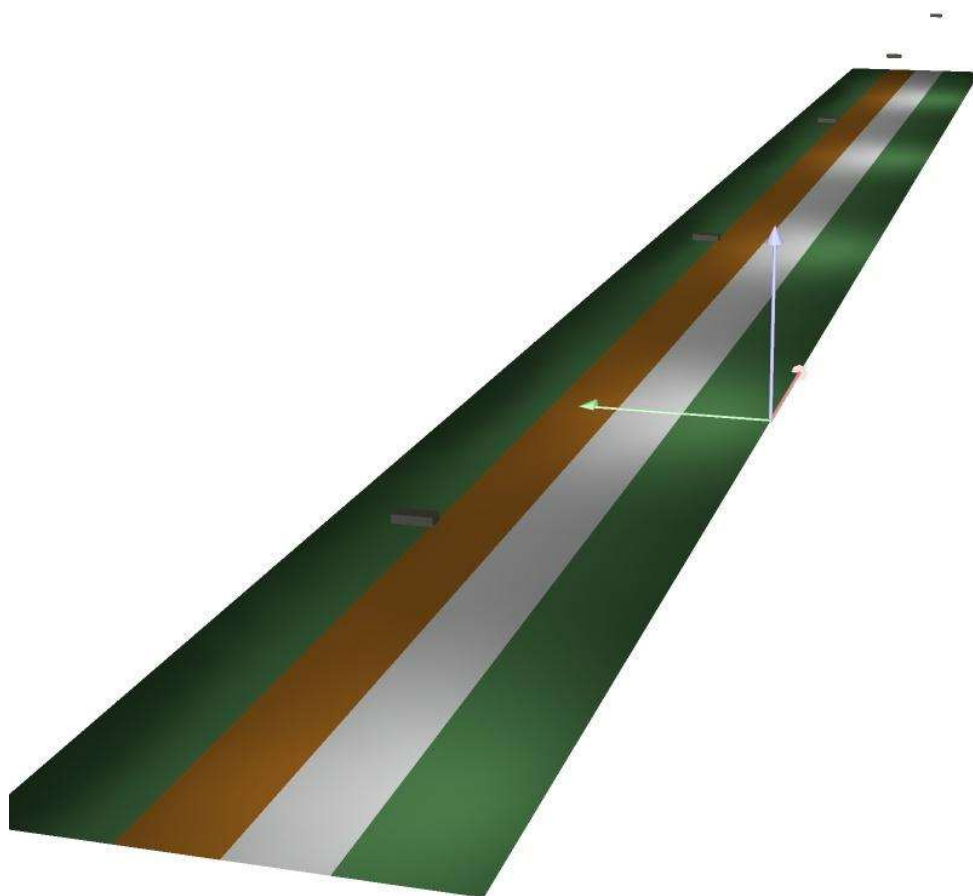
	E_{av} [lx]	E_{min} [lx]
Calculated values:	13.49	6.40
Required values according to class:	≥ 10.00	≥ 3.00
Fulfilled/Not fulfilled:	✓	✓



SIA Gaismas Stils
www.gaismasstils.lv
Maskavas iela 12, Rīga
LV-1050, Latvija

Operator Edgars Svētiņš
Telephone +371 67276760
Fax +371 67797444
e-Mail edgars@gaismasstils.lv

Veloceliņš / 3D Rendering

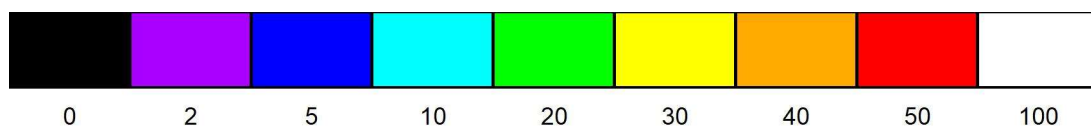
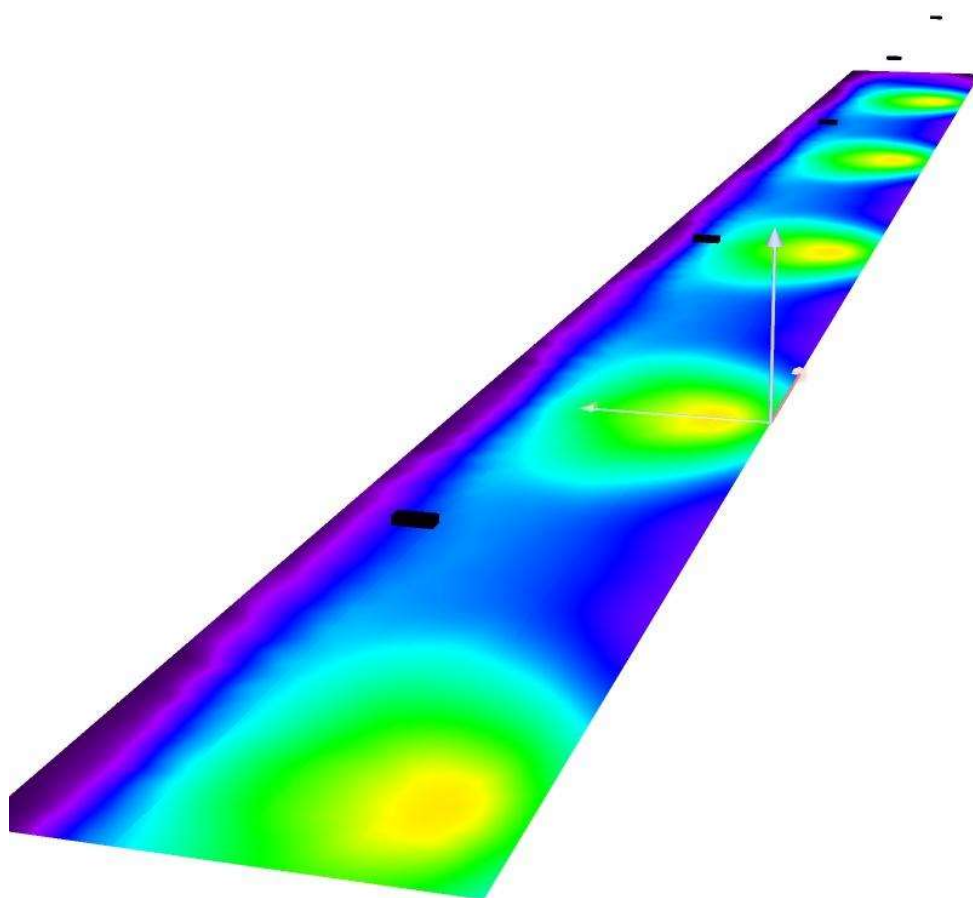




SIA Gaismas Stils
www.gaismasstils.lv
Maskavas iela 12, Rīga
LV-1050, Latvija

Operator Edgars Svētiņš
Telephone +371 67276760
Fax +371 67797444
e-Mail edgars@gaismasstils.lv

Veloceliņš / False Colour Rendering



lx