

SIA Gaismas Stils
www.gaismasstils.lv
Maskavas iela 12, Rīga
LV-1050, Latvija

Operator Edgars Svētiņš
Telephone +371 67276760
Fax +371 67797444
e-Mail edgars@gaismasstils.lv

Apgaismojuma risinājumi salāgoti ar Rāvas, Durbes un Rūpniecības
ielu būvprojektiem. Gaismekļi paredzēti tāda paša dizaina (tips), tikai
ar savādākiem parametriem – tieši speciāli priekš Apla ielas.

Table of contents

Apla iela	
Table of contents	1
Apla iela	
Planning data	2
Luminaire parts list	3
Photometric Results	4
3D Rendering	6
False Colour Rendering	7
Valuation Fields	
Brauktuve	
Observer	
Observer 1	
Isolines (L)	8
Observer 2	
Isolines (L)	9

SIA Gaismas Stils
www.gaismasstils.lv
Maskavas iela 12, Rīga
LV-1050, Latvija

Operator Edgars Svētiņš
Telephone +371 67276760
Fax +371 67797444
e-Mail edgars@gaismasstils.lv

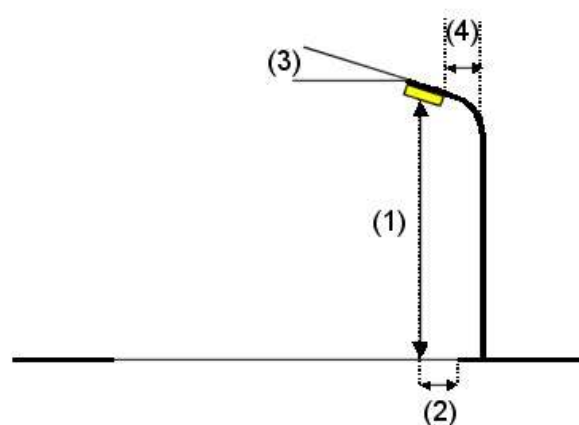
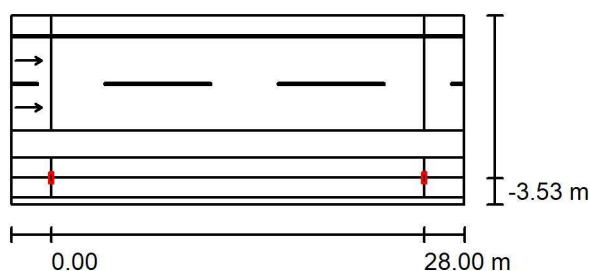
Apla iela / Planning data

Street Profile

Gājēju ietve	(Width: 1.500 m)
Zālājs	(Width: 0.150 m)
Brauktuve	(Width: 7.000 m, Number of lanes: 2, tarmac: R3, q0: 0.070)
Zālājs	(Width: 2.000 m)
Veloceliņš	(Width: 1.500 m)
Gājēju ietve	(Width: 1.500 m)
Zālājs	(Width: 0.500 m)

Maintenance factor: 0.80

Luminaire Arrangements



Luminaire:	CREE XSPD02210E30K_24-Q9 XSPD - E - Type 210 - Q9
Luminous flux (Luminaire):	10679 lm
Luminous flux (Lamps):	11483 lm
Luminaire Wattage:	98.0 W
Arrangement:	Single row, bottom
Pole Distance:	28.000 m
Mounting Height (1):	8.097 m
Height:	8.000 m
Overhang (2):	-3.500 m
Boom Angle (3):	15.0 °
Boom Length (4):	1.974 m

Maximum luminous intensities

at 70°: 437 cd/klm

at 80°: 282 cd/klm

at 90°: 12 cd/klm

Any direction forming the specified angle from the downward vertical, with the luminaire installed for use.

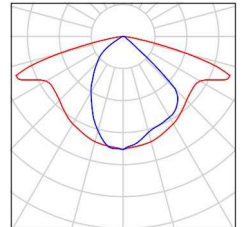
Arrangement complies with glare index class D.0.

SIA Gaismas Stils
www.gaismasstils.lv
Maskavas iela 12, Rīga
LV-1050, Latvija

Operator Edgars Svētiņš
Telephone +371 67276760
Fax +371 67797444
e-Mail edgars@gaismasstils.lv

Apla iela / Luminaire parts list

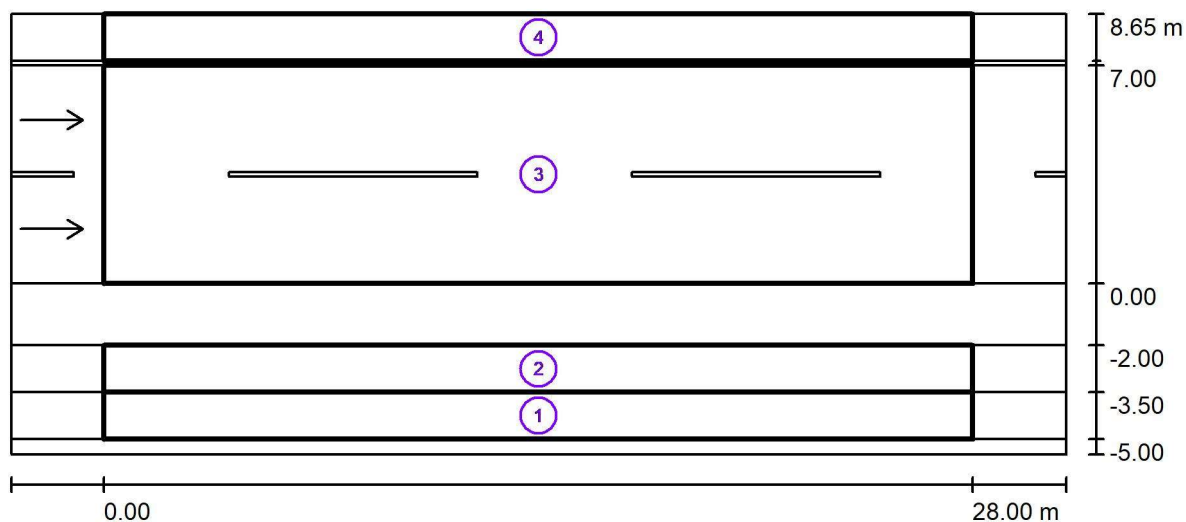
CREE XSPD02210E30K_24-Q9 XSPD - E - Type
210 - Q9
Article No.: XSPD02210E30K_24-Q9
Luminous flux (Luminaire): 10679 lm
Luminous flux (Lamps): 11483 lm
Luminaire Wattage: 98.0 W
Luminaire classification according to CIE: 100
CIE flux code: 48 81 97 100 93
Fitting: 1 x 5 LED MD-A Q9 3K 12V (Correction
Factor 1.000).



SIA Gaismas Stils
www.gaismasstils.lv
Maskavas iela 12, Rīga
LV-1050, Latvija

Operator Edgars Svētiņš
Telephone +371 67276760
Fax +371 67797444
e-Mail edgars@gaismasstils.lv

Apla iela / Photometric Results



Maintenance factor: 0.80

Scale 1:244

Calculation Field List

- Gājēju ietve
Length: 28.000 m, Width: 1.500 m
Grid: 10 x 3 Points
Accompanying Street Elements: Gājēju ietve.
Selected Lighting Class: S2 (Not all lighting performance requirements are met.)

	E_{av} [lx]	E_{min} [lx]
Calculated values:	18.50	6.89
Required values according to class:	≥ 10.00	≥ 3.00
Fulfilled/Not fulfilled:	✗ 1	✓

¹ Notice: To provide for uniformity, the actual value of the maintained average illuminance may not exceed 1.5 times the minimum value indicated for the class.

SIA Gaismas Stils
www.gaismasstils.lv
Maskavas iela 12, Rīga
LV-1050, Latvija

Operator Edgars Svētiņš
Telephone +371 67276760
Fax +371 67797444
e-Mail edgars@gaismasstils.lv

Apla iela / Photometric Results

Calculation Field List

2 Veloceliņš

Length: 28.000 m, Width: 1.500 m

Grid: 10 x 3 Points

Accompanying Street Elements: Veloceliņš.

Selected Lighting Class: S2 (Not all lighting performance requirements are met.)

	E_{av} [lx]	E_{min} [lx]
Calculated values:	23.22	9.01
Required values according to class:	≥ 10.00	≥ 3.00
Fulfilled/Not fulfilled:	 1	

¹ Notice: To provide for uniformity, the actual value of the maintained average illuminance may not exceed 1.5 times the minimum value indicated for the class.

3 Brauktuve






Length: 28.000 m, Width: 7.000 m

Grid: 10 x 6 Points

Accompanying Street Elements: Brauktuve.

tarmac: R3, q0: 0.070

Selected Lighting Class: ME4b (All lighting performance requirements are met.)

	L_{av} [cd/m ²]	U0	UI	TI [%]	SR
Calculated values:	0.76	0.54	0.65	14	1.05
Required values according to class:	≥ 0.75	≥ 0.40	≥ 0.50	≤ 15	≥ 0.50
Fulfilled/Not fulfilled:					

4 Gājēju ietve

Length: 28.000 m, Width: 1.500 m

Grid: 10 x 3 Points

Accompanying Street Elements: Gājēju ietve.

Selected Lighting Class: S3 (All lighting performance requirements are met.)

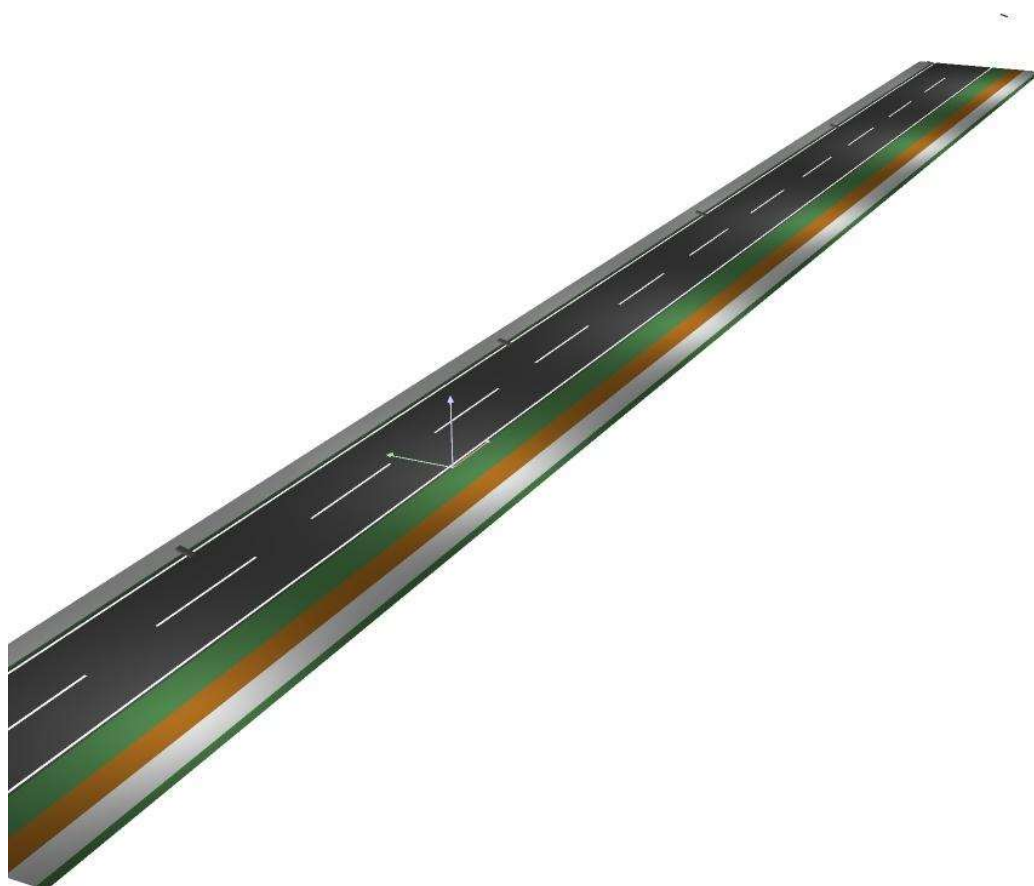
	E_{av} [lx]	E_{min} [lx]
Calculated values:	8.37	7.44
Required values according to class:	≥ 7.50	≥ 1.50
Fulfilled/Not fulfilled:		



SIA Gaismas Stils
www.gaismasstils.lv
Maskavas iela 12, Rīga
LV-1050, Latvija

Operator Edgars Svētiņš
Telephone +371 67276760
Fax +371 67797444
e-Mail edgars@gaismasstils.lv

Apla iela / 3D Rendering

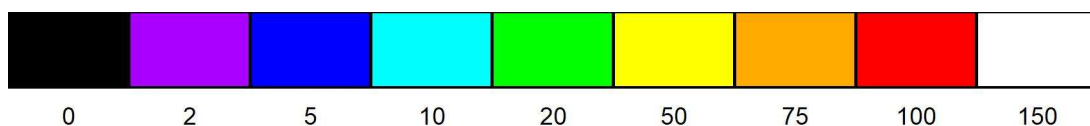
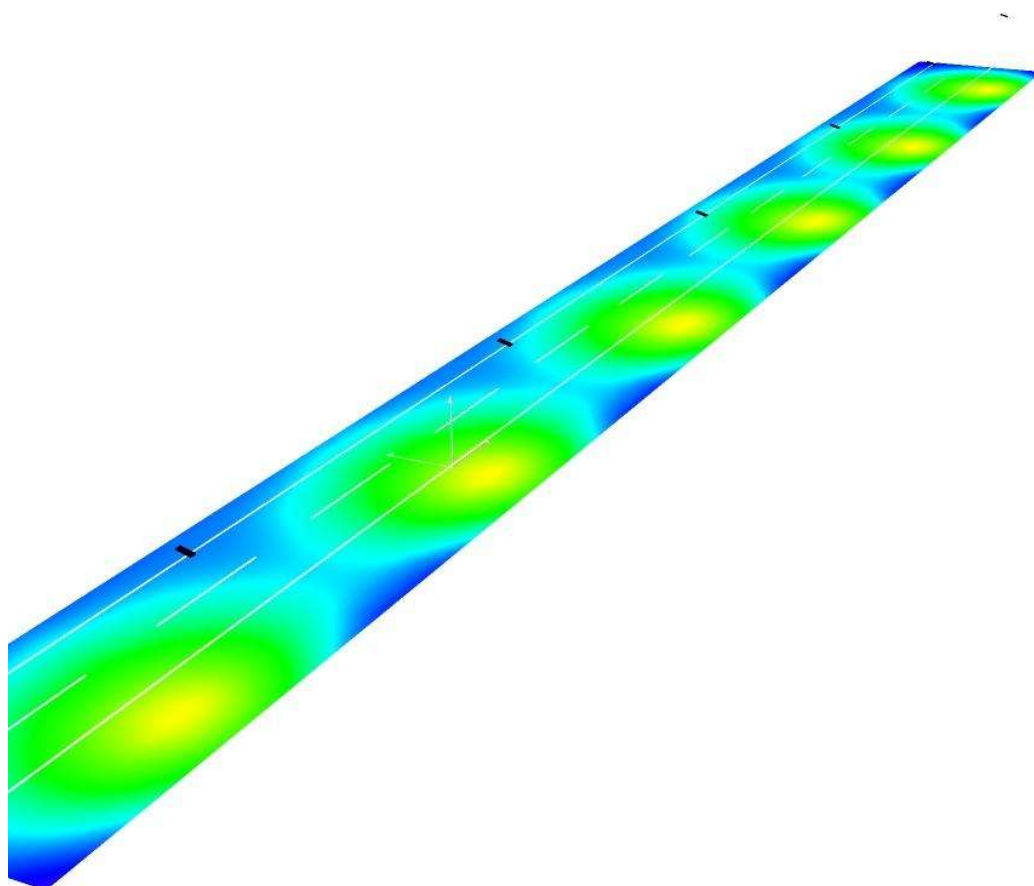




SIA Gaismas Stils
www.gaismasstils.lv
Maskavas iela 12, Rīga
LV-1050, Latvija

Operator Edgars Svētiņš
Telephone +371 67276760
Fax +371 67797444
e-Mail edgars@gaismasstils.lv

Apla iela / False Colour Rendering

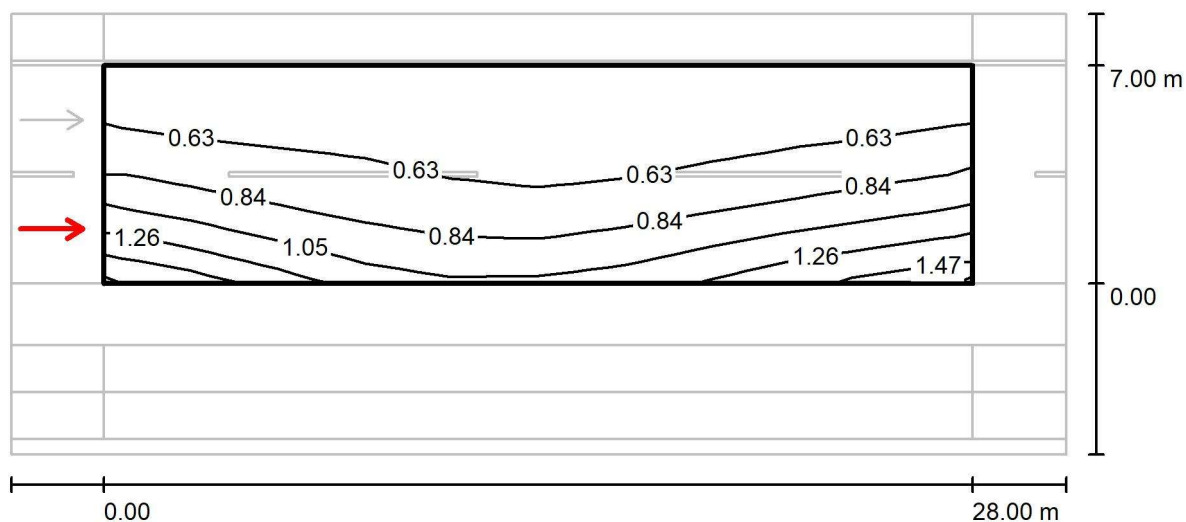


lx

SIA Gaismas Stils
www.gaismasstils.lv
Maskavas iela 12, Rīga
LV-1050, Latvija

Operator Edgars Svētiņš
Telephone +371 67276760
Fax +371 67797444
e-Mail edgars@gaismasstils.lv

Apla iela / Brauktuve / Observer 1 / Isolines (L)



Values in Candela/m², Scale 1 : 244

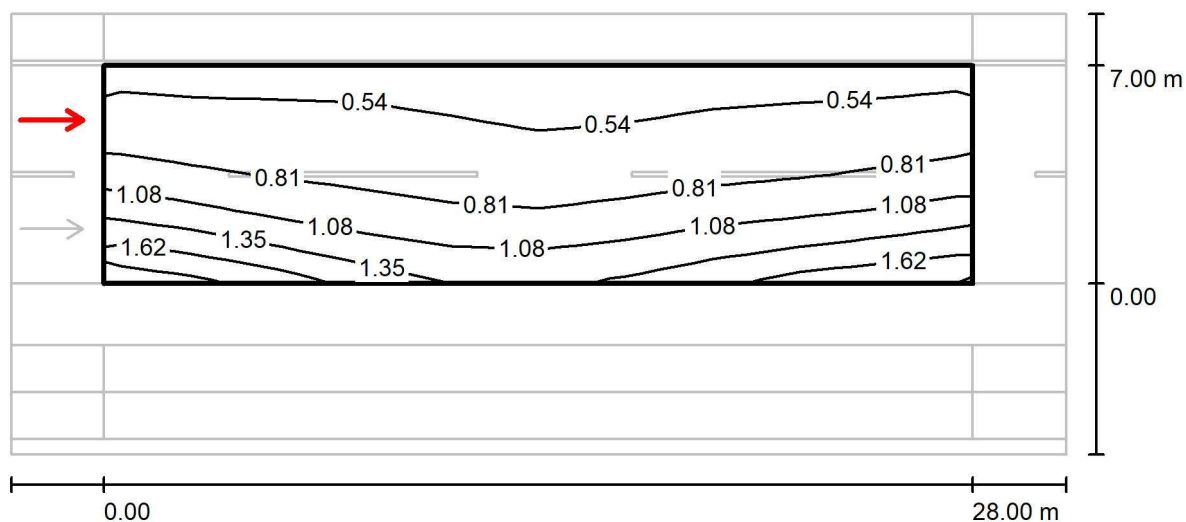
Grid: 10 x 6 Points
Observer Position: (-60.000 m, 1.750 m, 1.500 m)
tarmac: R3, q0: 0.070

	L_{av} [cd/m²]	U0	UI	TI [%]
Calculated values:	0.76	0.57	0.65	14
Required values according to class ME4b:	≥ 0.75	≥ 0.40	≥ 0.50	≤ 15
Fulfilled/Not fulfilled:	✓	✓	✓	✓

SIA Gaismas Stils
www.gaismasstils.lv
Maskavas iela 12, Rīga
LV-1050, Latvija

Operator Edgars Svētiņš
Telephone +371 67276760
Fax +371 67797444
e-Mail edgars@gaismasstils.lv

Apla iela / Brauktuve / Observer 2 / Isolines (L)



Values in Candela/m², Scale 1 : 244

Grid: 10 x 6 Points
Observer Position: (-60.000 m, 5.250 m, 1.500 m)
tarmac: R3, q0: 0.070

	L_{av} [cd/m²]	U0	UI	TI [%]
Calculated values:	0.87	0.54	0.82	8
Required values according to class ME4b:	≥ 0.75	≥ 0.40	≥ 0.50	≤ 15
Fulfilled/Not fulfilled:	✓	✓	✓	✓