

# DHS 400E4 SILEO

Item no. 36123

Version: 60 Hz

Document type: **Product card**  
Document date: **2018-03-21**  
Generated by: **Systemair Online Catalogue**



## Description

- High efficiency
- Speed-controllable
- Integral thermal contacts
- Excellent sound level
- Extensive range of accessories
- Maintenance-free and reliable

The DVS/DHS/DVSI sileo is well suited for applications requiring high air volumes at medium pressure and very low noise levels. These models have 3D profiled impellers with backward curved blades and external rotor motors. All motors are speed controllable over the voltage. For speed controlling of the DVS/DHS/DVSI sileo roof fans with a frequency converter a type with all pole sine filter is needed! The motors are suspended on effective vibration dampers.



DVS/DHS/DVSI sileo ...E4 / E6 / EZ / EV: 1~ motor

DVS/DHS/DVSI sileo ...DV / DS: 3~ with Y/D-connection for 2-speeds

To protect the motors from overheating the sileo range motors up to size 311 are equipped with integrated thermal contacts with manual reset in acc. with EN 60335-2-80. From size 355 with external leads for connection to a motor protection device. The casing is made from aluminum and the base frame from galvanized steel. Suitable for coastal applications. The impellers of the sileo types are manufactured from high-performance composite material with highly efficient 3D fan blade profile technology.

DVS sileo with vertical outlet

DHS sileo with horizontal outlet

DVSI sileo has a 50 mm mineral wool insulation for lower noise levels.

## Technical parameters

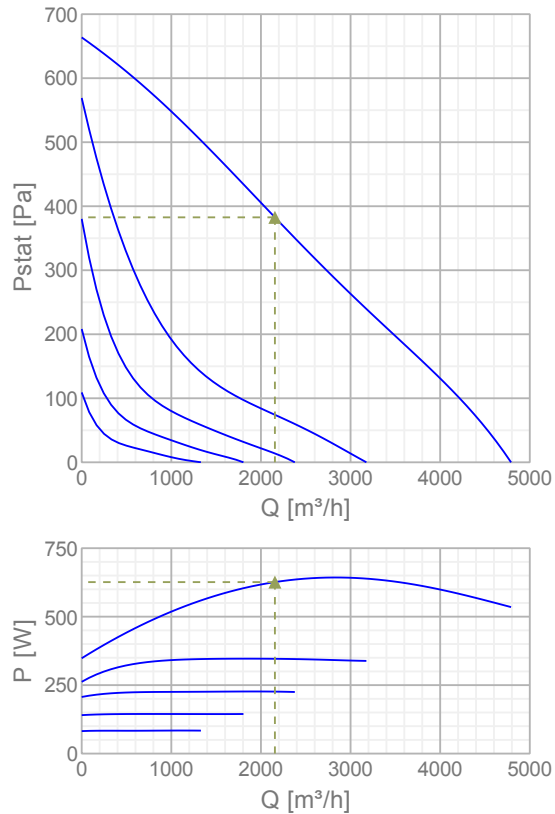
ErP		
ErP ready	ErP 2016	
Nominal data		
Voltage	230	V
Frequency	60	Hz
Phase	1	~
Input power (P1)	643	W
Current	3,02	A
Max. airflow	4792	m³/h
Fan impeller speed	1400	r.p.m.
Capacitor	9	µF
Weight	24,4	kg

Temperature data	
Max. temperature of transported air	60 °C
Max. temperature of transported air when voltage-controlled	60 °C
Sound data	
Sound pressure level at 4 m (free field)	51 dB(A)
Sound pressure level at 10 m (free field)	43 dB(A)
Protection / Classification	
Insulation class	F
Enclosure class, motor	IP54

## EPS diagrams

### Performance

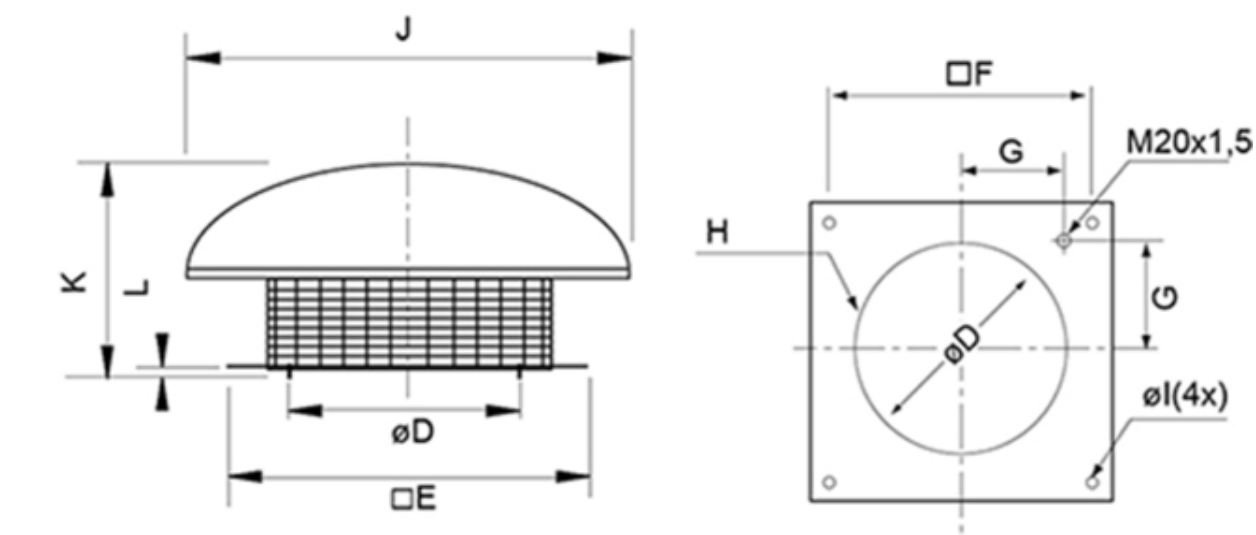
#### Diagrams



#### Max efficiency

Hydraulic data	
▲ Working air flow	2156 m³/h
▲ Working static pressure	383 Pa
▲ Power	626 W
Speed	1427 r.p.m.
Current	2,91 A
SFP	1,05 kW/(m³/s)
Voltage	230 V

Dimensions

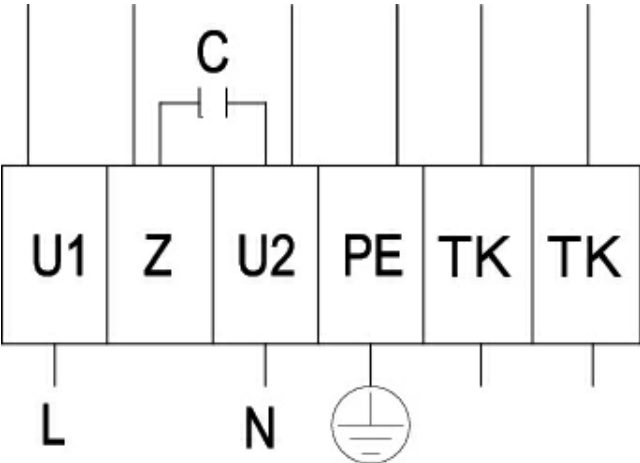


DHS	øD	øE	F	G	H	øI	J	K	L
400	438	595	450	200	6xM8	12	ø720	330	30

\* diameter D refers to screw-hole-circuit H

Wiring

U1	blue (L)
Z	brown
U2	black (N)
PE	green/yellow
TK	grey



Accessories



Electric accessories

- [REU 3 Speed control \(5005\)](#)
- [RTRE 3 Speed control \(5009\)](#)
- [REE 4 Speed control \(5317\)](#)
- [S-ET 10 Motor Protection \(5154\)](#)
- [REV-5POL/05 ON/OFF \(33979\)](#)
- [FRQS-E-6A \(37419\)](#)
- [FRQ5S-E-6A \(37421\)](#)

Accessories

- [VKS 355-500 Back draft damper \(9544\)](#)
- [FDS 355/400 flat roof socket \(9550\)](#)
- [VKM 355-500 Back draft damper \(9556\)](#)
- [SSD 355/400 socket silencer \(9562\)](#)
- [ASF 355-500 inlet flange DVS \(9569\)](#)
- [ASS 355-500 flex. con. DVS \(9576\)](#)
- [ASK 355/400 inflow box SSD \(300905\)](#)
- [FTG 355/400 Tilting device \(30508\)](#)
- [TDA DV 355/400 Adapter \(301393\)](#)
- [SSD 355/400 ZM socket sil \(95061\)](#)
- [SDS 355/400 slant. roof socket \(3785\)](#)
- [FDS-L 355/400 flat roof socket \(95281\)](#)

Documentation

-  [manual\\_roof fans\\_315726\\_en-de\\_\[001\].pdf \(1 016,45kB\)](#)
-  [ec-dec\\_dv\\_160510\\_de,en\\_005\\_ab 20. April.pdf \(549,58kB\)](#)

Acoustics

Mid-frequency band, Hz										
	Hz	Tot	63	125	250	500	1k	2k	4k	8k
LwA Inlet	dB(A)	69	40	59	67	62	58	55	51	48
LwA Surrounding	dB(A)	71	44	64	63	67	65	58	53	49
With SSD 355/400										
LwA Inlet	dB(A)	56	26	48	52	51	46	44	40	41
Measuring point: qv = 0,65 m3/s, Ps = 309 Pa										

Specification text

.