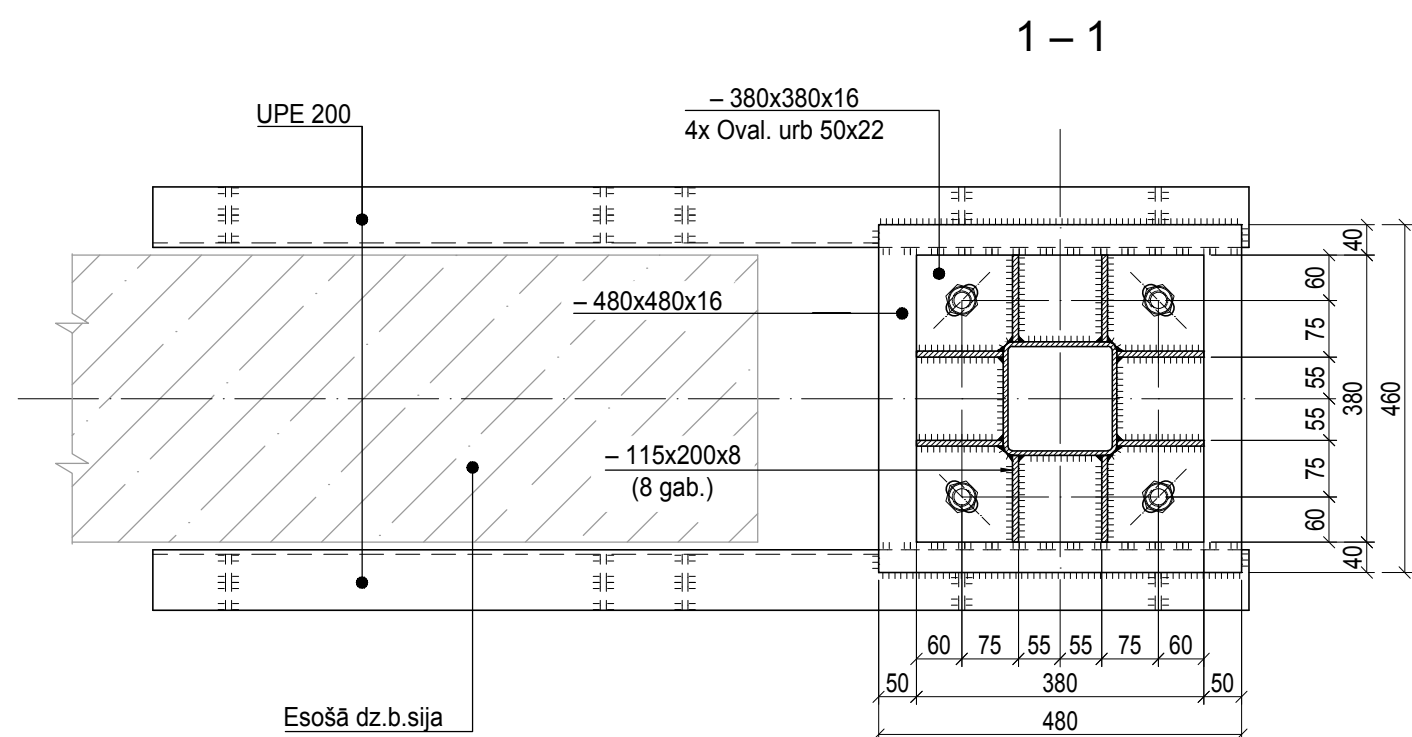
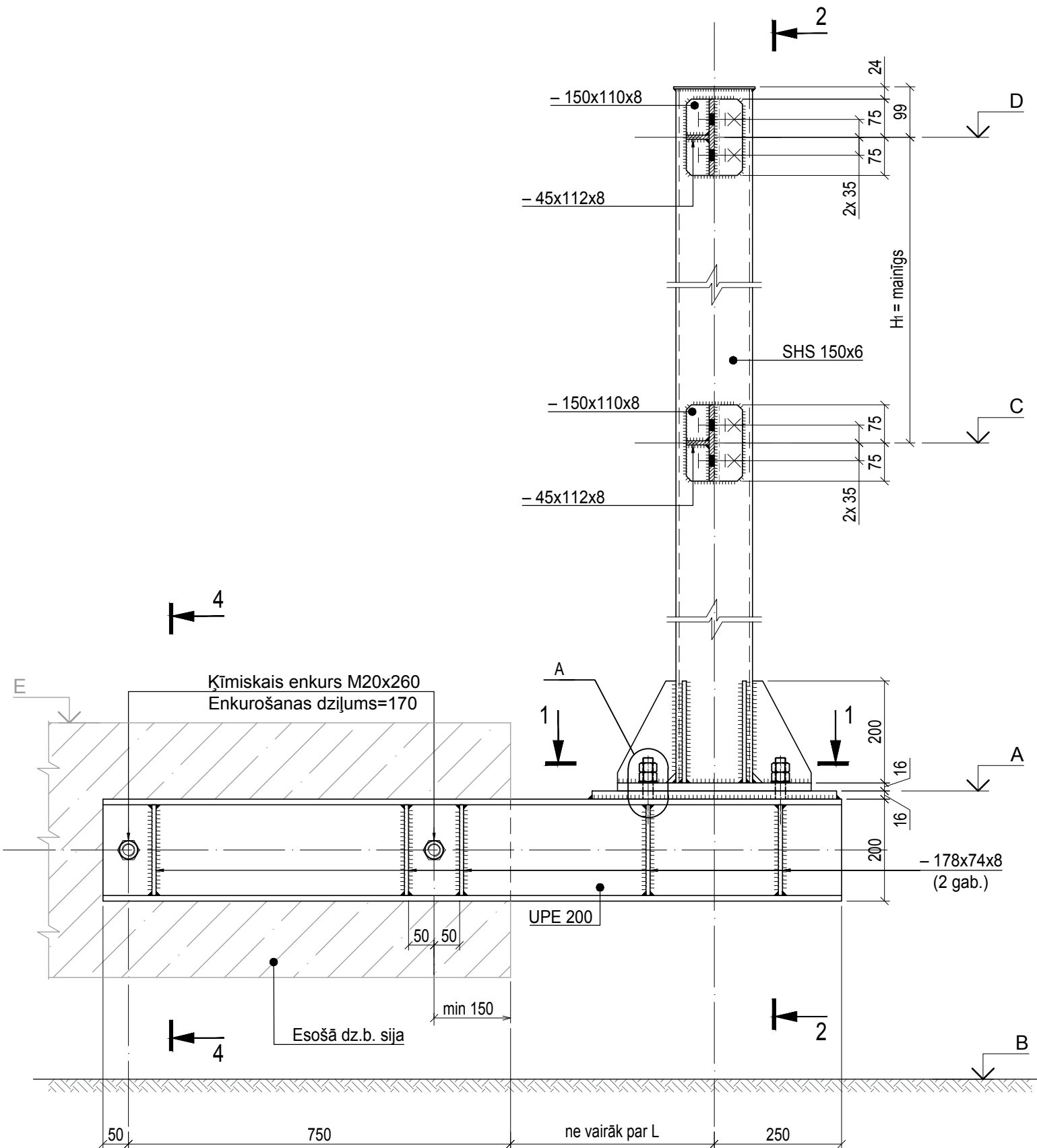
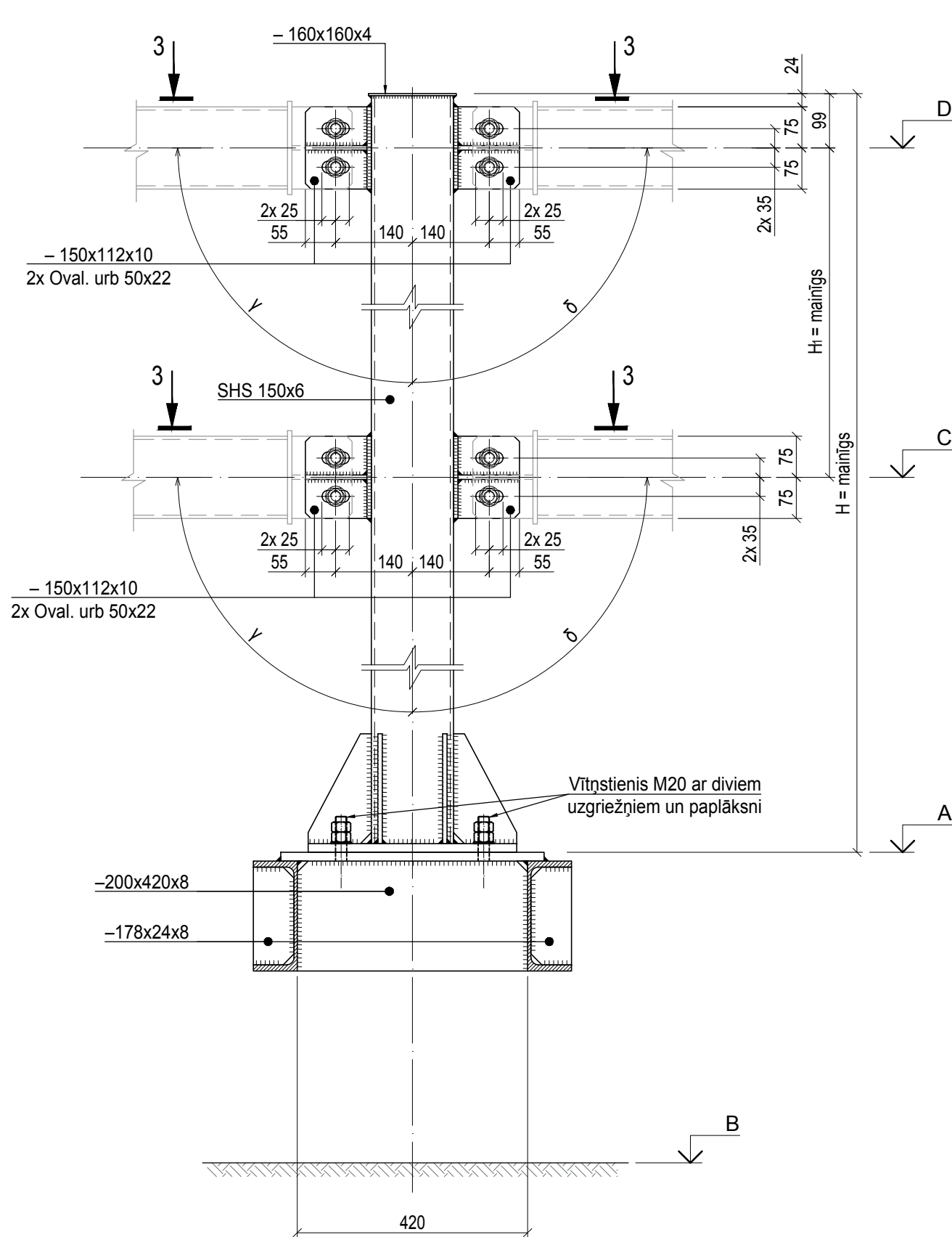


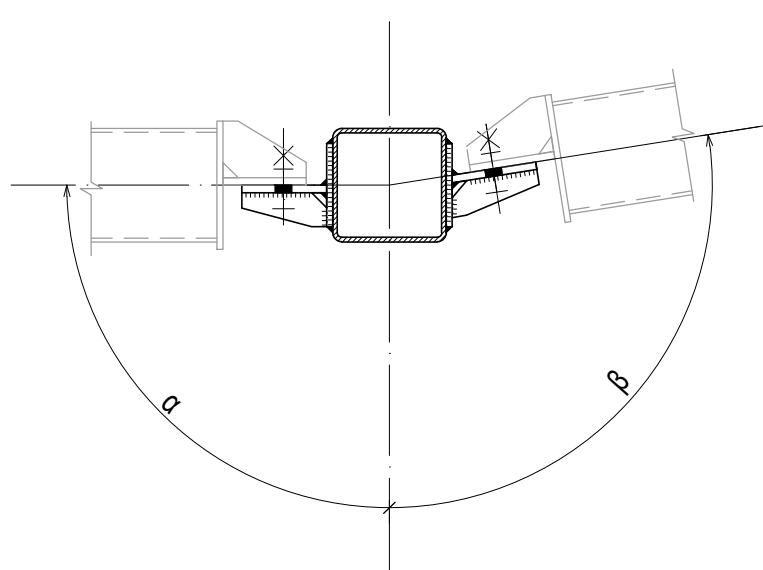
Statnis ST9



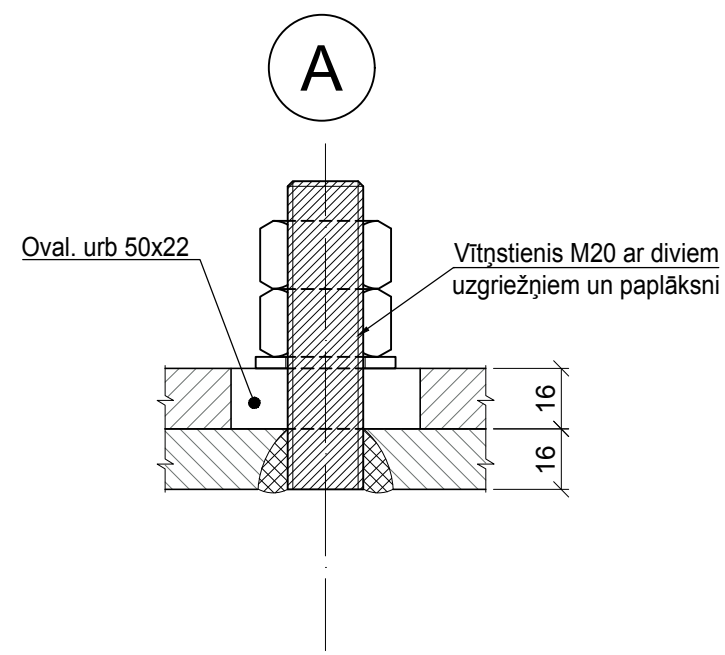
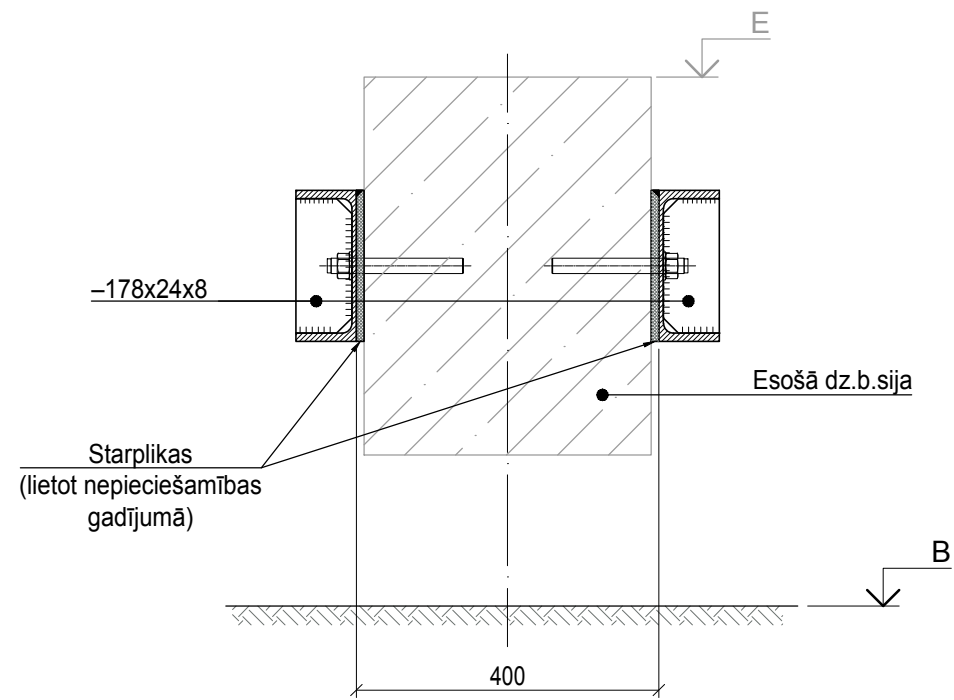
2 - 2



3 - 3



4 - 4



1. Lapu skatīt kopā ar lapām MK-2, MK-3;
2. Materiālu specifikāciju skatīt lapā MK-4;
3. Lapu skatīt kopā ar lapā MK-1 (norādījumi p.5);
4. Ķīmisko enkuru raksturlielumus skat. lapā MK-04.

| Augstuma atzīmju tabula |            |            |            |            |            |          |                       |          |            |            |            |            |
|-------------------------|------------|------------|------------|------------|------------|----------|-----------------------|----------|------------|------------|------------|------------|
| Ass nr.                 | (A)<br>[m] | (B)<br>[m] | (C)<br>[m] | (D)<br>[m] | (E)<br>[m] | L<br>[m] | H <sub>i</sub><br>[m] | H<br>[m] | (α)<br>[°] | (β)<br>[°] | (γ)<br>[°] | (δ)<br>[°] |
| 101                     | +3,500     | +2,790*    | +3,850     | +4,650     | +3,650*    | 700      | 800                   | 1249     | 90         | 90         | 90         | 107,7      |
| 102                     | +3,500     | +2,790*    | +3,850     | +4,650     | +3,670*    | 700      | 800                   | 1249     | 90         | 90         | 90         | 90         |
| 103                     | +3,500     | +2,790*    | +3,850     | +4,650     | +3,680*    | 700      | 800                   | 1249     | 90         | 90         | 90         | 90         |
| 104                     | +3,500     | +2,770*    | +3,850     | +4,650     | +3,680*    | 700      | 800                   | 1249     | 90         | 90         | 90         | 90         |
| 105                     | +3,500     | +2,770*    | +3,850     | +4,650     | +3,710*    | 700      | 800                   | 1249     | 90         | 90         | 90         | 90         |
| 106                     | +3,500     | +2,785*    | +3,850     | +4,650     | +3,710*    | 700      | 800                   | 1249     | 90         | 90         | 90         | 90         |
| 107                     | +3,500     | +2,800*    | +3,850     | +4,650     | +3,720*    | 700      | 800                   | 1249     | 90         | 90         | 90         | 90         |
| 155                     | +3,950     | +2,895*    | +5,350     | +6,150     | +4,070*    | 600      | 800                   | 2299     | 90         | 80,7       | 90         | 90         |
| 156                     | +3,950     | +3,135*    | +5,350     | +6,150     | +4,080*    | 600      | 800                   | 2299     | 90         | 90         | 90         | 90         |
| 157                     | +3,950     | +3,365*    | +5,350     | +6,150     | +4,100*    | 600      | 800                   | 2299     | 90         | 90         | 90         | 90         |
| 158                     | +3,950     | +3,590*    | +5,350     | +6,150     | +4,090*    | 600      | 800                   | 2299     | 90         | 90         | 90         | 90         |

|                                 |   |  |
|---------------------------------|---|--|
| C                               |   |  |
| B                               |   |  |
| A                               |   |  |
| VERSĪJA                         | IZMAIŅAS  | DATUMS   |
| PASŪTĪTĀJS:                     |   | Jāņa iela 19,<br>Ventspils, LV-3601, Latvija<br>Tālr. (+371) 63622586<br>Fakss (+371) 63621297 |
| BŪVPROJEKTA IZSTRĀDĀTĀJS:       |   | Eksporta iela 6,<br>LV-1010, Rīga<br>Tālr. (+371) 67842514<br>Fakss (+371) 67842514            |
| BŪVPROJEKTA DAĻAS IZSTRĀDĀTĀJS: |   | Turaidas iela 10 B<br>LV-1039, Rīga<br>Tālr. (+371) 67045670<br>Fakss (+371) 67045671          |
| OBJEKTA NOSAUKUMS:              | Ventspils brīvostas Ziemeļu mola<br>atjaunošana.<br>Būvprojekts |  |
| PROJEKTA Nr.:                   | 17-07   |  |
| STADIJA:                        | BP  |  |
| BŪVES NOSAUKUMS:                | Ventspils brīvostas Ziemeļu mols                                |  |
| BŪVPROJEKTA DAĻA:               | MK  |  |
| RASEJUMA NOSAUKUMS:             | Statnis ST9   |  |
| RASEJUMA Nr.:                   | MK-13   |  |
| MĒROGS:                         | 1:2; 1:10   |  |
| Būvproj.d.vadītājs:             | G. Muravskis  | DATUMS:<br>06.08.2018  |
| Izstrādāja:                     | I. Hartmane   | LAPU SKAITS: 1 CAUR.Nr.:   |
| FAILA NOSAUKUMS:                |   | 34316.dwg  |
| ARHĪVA Nr.:                     |   | P-34316  |