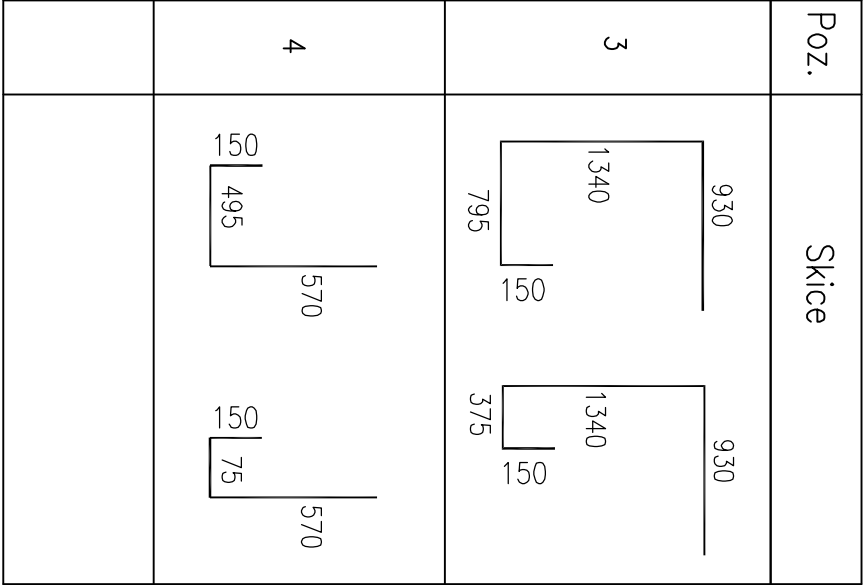
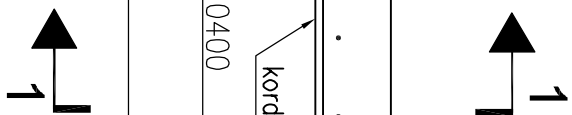


M 1 : 100

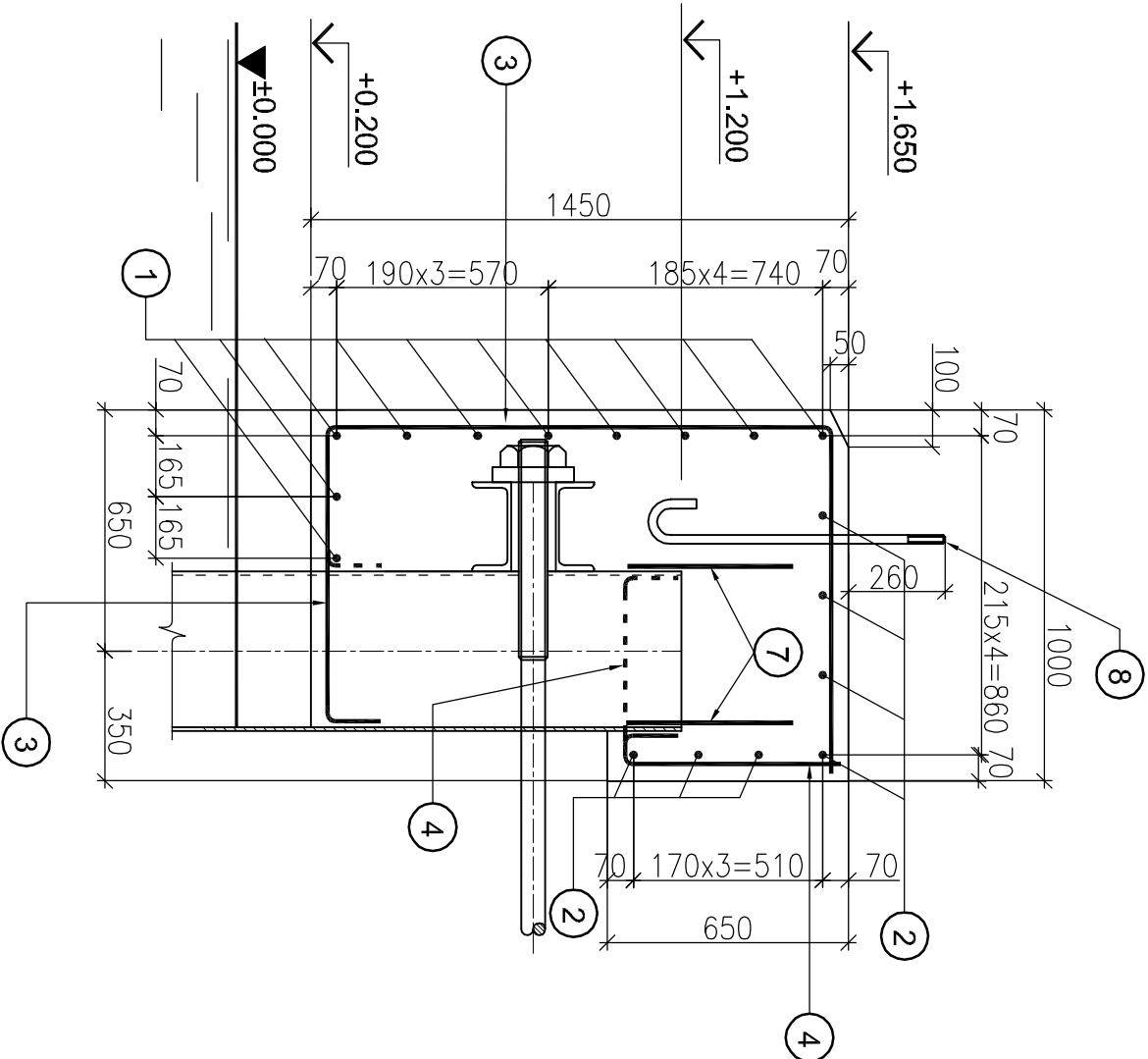


Elementa marka	Poz. Nr.	Apzīmējums	Nosaukums	Daudz.	Masā, kg.		Piezīmes
					1poz.	visas	
STĒGEROUMS							
Vm-5 (3gab.)	1		Ø20mm L=23940mm.	10	59.13	591.30	
	2		Ø12mm L=23940mm.	7	21.31	149.13	
	3		Ø12mm L _{vid.} =3005mm.	121	2.67	323.07	
	4		Ø12mm L _{vid.} =1005mm.	121	0.90	108.9	
	7		Ø25mm L=450mm.	200	1.73	346.0	
				KOPĀ:	1518.40		
IEĻĒKAMĀS DETALAS							
8	lopõ HR1A-21		Enkurskrūve M24	31	3.70	114.70	
MATERIĀLI							
			Betons	1	28.0	m ³	

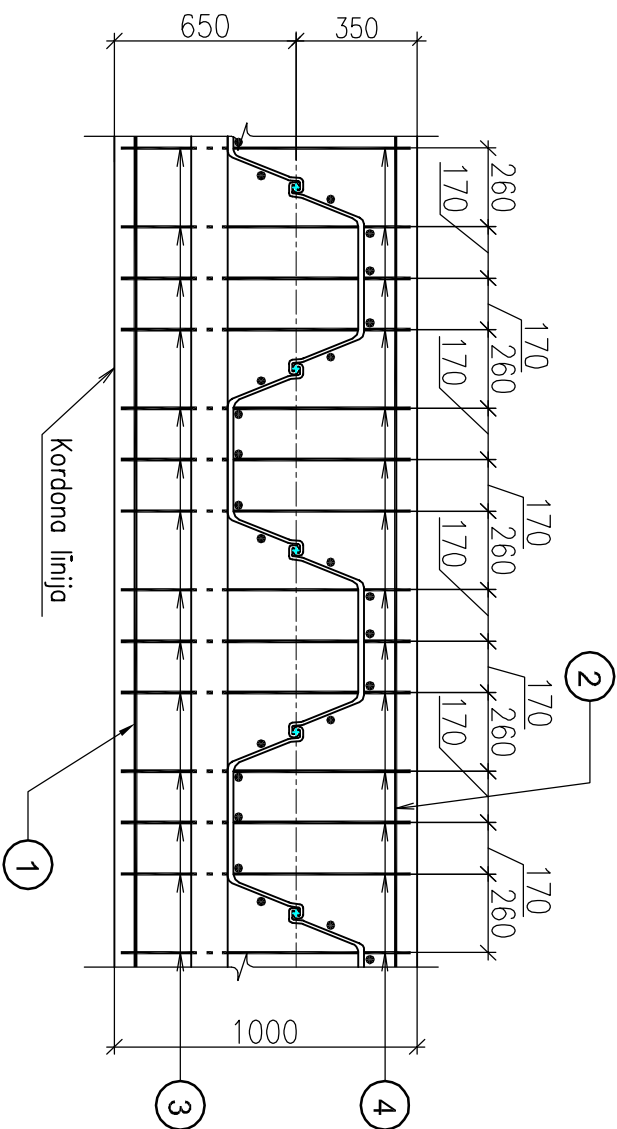
M 1 : 100



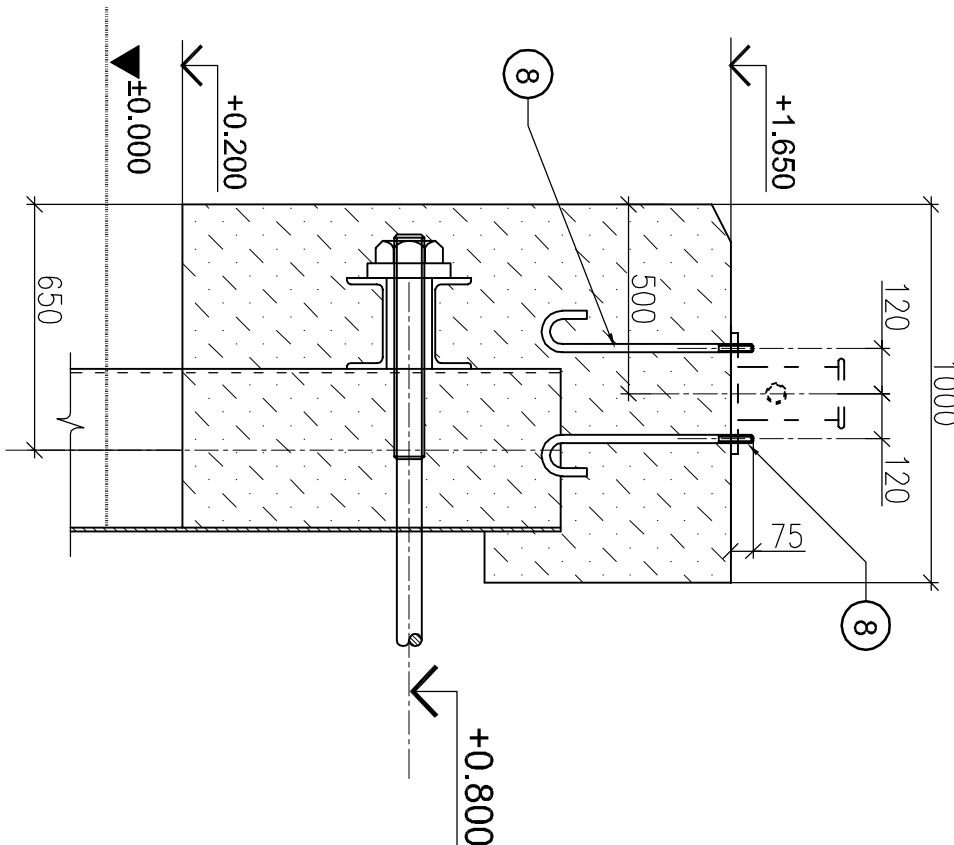
M 1:20



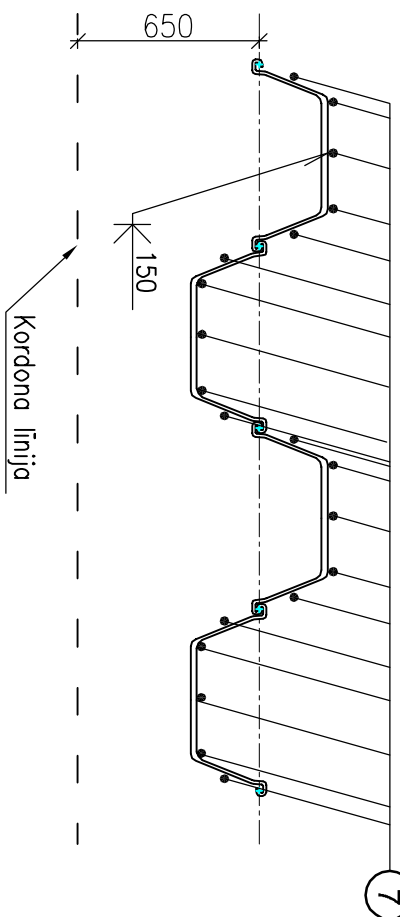
M 1:25



M 1:20



M 1:25



1. Virsbūvju izvietojums dots lapā HR1A-3.
2. Skrūves poz.8 (slīdrogam) uzstādīt stingri pēc šablona.
3. Stienus poz. 3; 4; 7 piemērināt pie rievpāliem (šuve L=150, h=10)

[illegible]