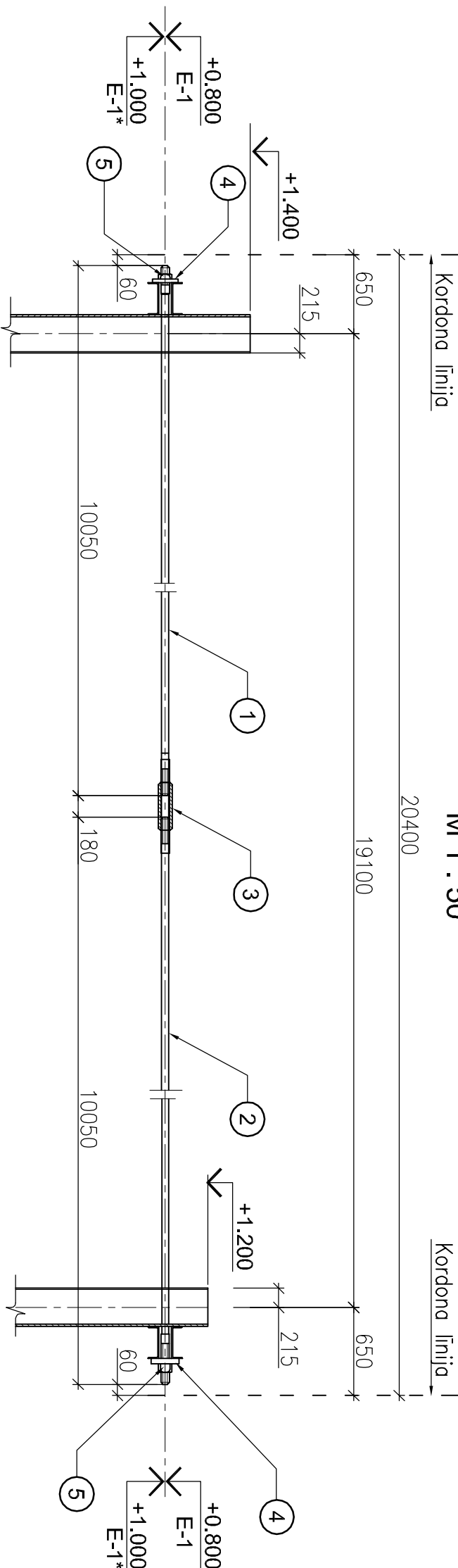


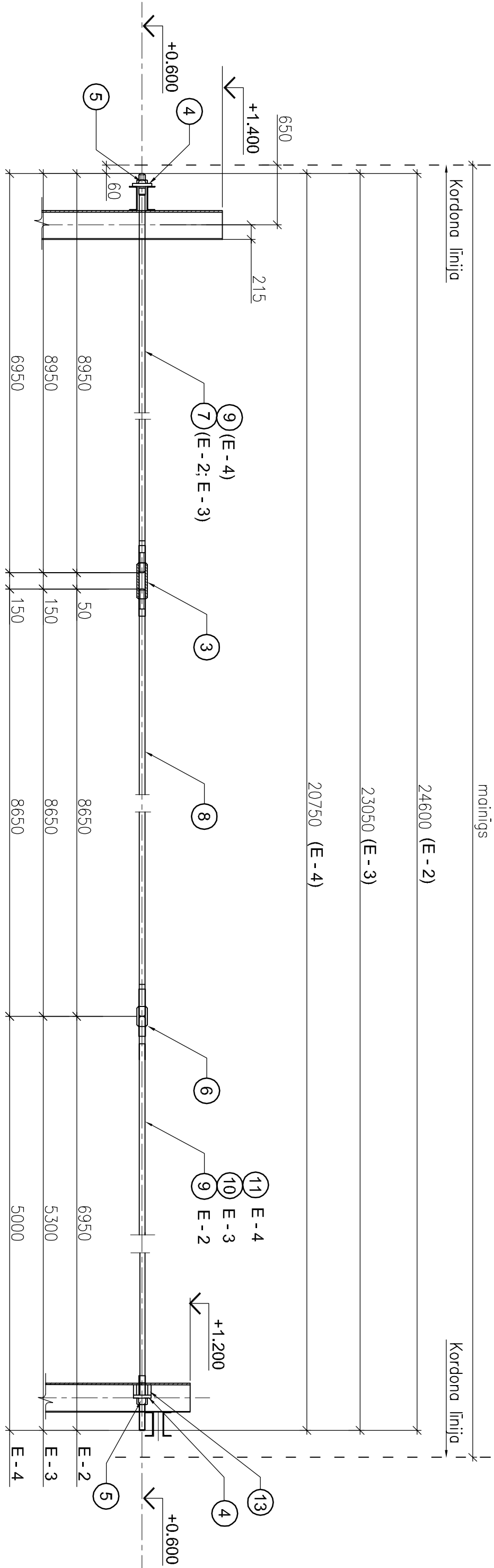
## Enkuri E - 1, E - 1\*.

M 1 : 50



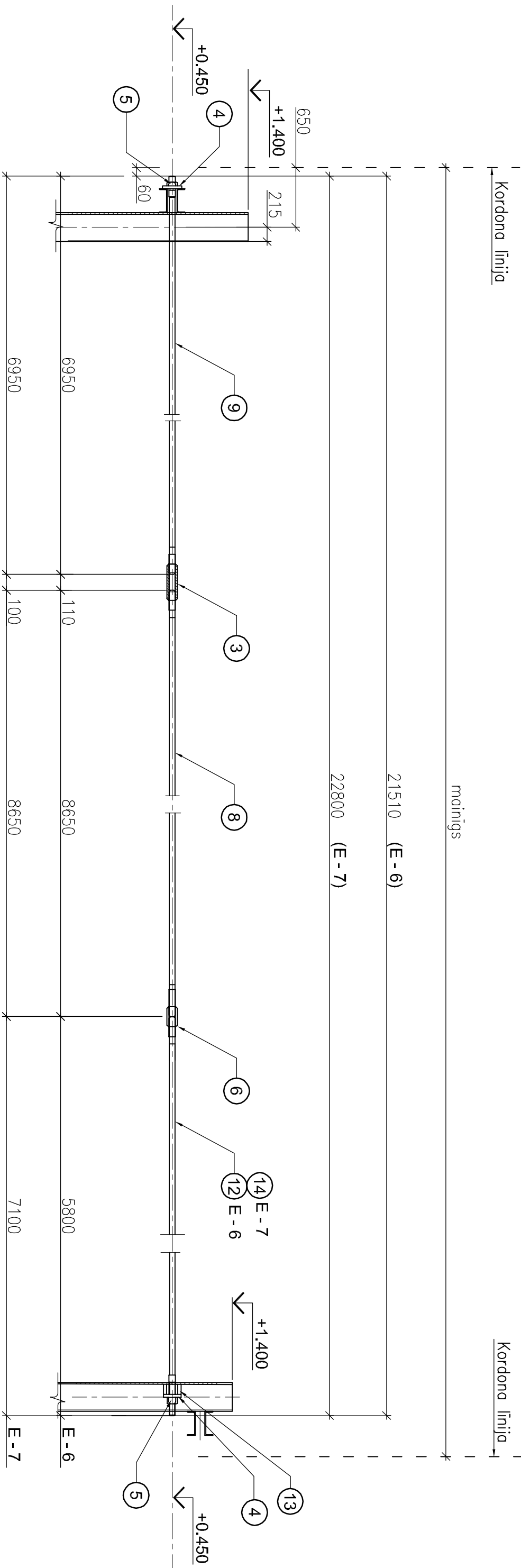
Enkuri E -2, E -3, E -4.

M 1 : 50



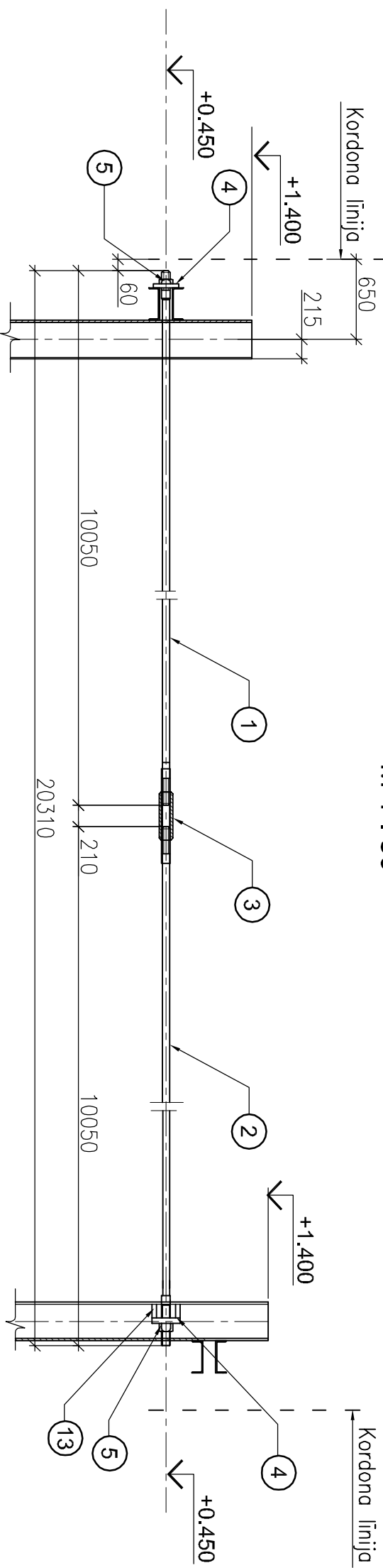
Enkuri E-6, E-7.

M 1 : 50



## Enkurs E - 5

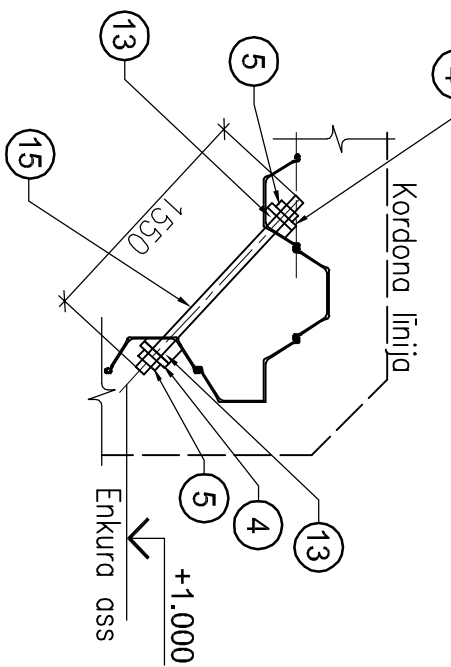
M 1 : 50



## Enkurs E - 8.

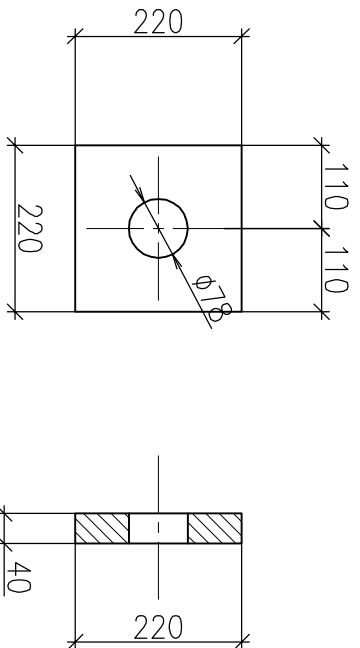
---

mērogs 1 : 50



Paliktnis (poz.4)

mērogs 1:10



SPECIFIKACIJA						
Elementa morfka	Poz. Nr.	Agencijams	Nosokursms	Douduz. 1 top.	Mocu, kg. viss	Pezims
E-1 (13 gub.)	1	3.504-1-23.3 130065	AT 100.60	1	233.83	233.83
	2	3.504-1-23.3 230065	AT 100.5.60	1	230.09	230.09
	3	3.504-1-23.3 0010	MH-72	1	19.47	—
E-1* (5 gub.)	4		Palkms (Slokene 220x220x40)	2	13.7	27.4
	5		Uzgrzems WZ.6	2	2.69	5.38
						Tirouds S355J2
				KOPk.	516.17	
E-2 (1 gub.)	7	3.504-1-23.3 130065	AT 89.60	1	209.42	209.42
	8	3.504-1-23.3 230065	AT 86.60	1	199.02	199.02
	9	3.504-1-23.3 130065	AT 69.60	1	165.04	165.04
	3	3.504-1-23.3 0010	MH-72	1	19.47	—
	6	3.504-1-23.3 0020	MC-72	1	8.67	—
	4		Palkms (Slokene 220x220x40)	2	13.7	27.4
	5		Uzgrzems WZ.6	2	2.69	5.38
	13		Slokene n=20	2	3.14	6.28
				KOPk.	640.88	
E-3 (1 gub.)	7	3.504-1-23.3 130065	AT 89.60	1	209.42	209.42
	8	3.504-1-23.3 230065	AT 86.60	1	199.02	199.02
	10	3.504-1-23.3 130065	AT 53.60	1	128.43	128.43
	3	3.504-1-23.3 0010	MH-72	1	19.47	—
	6	3.504-1-23.3 0020	MC-72	1	8.67	—
	4		Palkms (Slokene 220x220x40)	2	13.7	27.4
	5		Uzgrzems WZ.6	2	2.69	5.38
	13		Slokene n=20	2	3.14	6.28
				KOPk.	604.07	
E-4 (1 gub.)	9	3.504-1-23.3 130065	AT 69.60	1	165.04	165.04
	8	3.504-1-23.3 230065	AT 86.60	1	199.02	199.02
	11	3.504-1-23.3 130065	AT 50.60	1	121.77	121.77
	3	3.504-1-23.3 0010	MH-72	1	19.47	—
	6	3.504-1-23.3 0020	MC-72	1	8.67	—
	4		Palkms (Slokene 220x220x40)	2	13.7	27.4
	5		Uzgrzems WZ.6	2	2.69	5.38
	13		Slokene n=20	2	3.14	6.28
				KOPk.	553.03	

SPECIFICĀCIJA						
Elementa marķa	Poz. Nr.	Apmērojums	Nosaukums	Durūz. Izpaz.	Mosn., kg vienā	Pietīmes
E-5 (1 gnb.)	1	3.504-1-23.3 1300CB	AI 100,60	1	233,03	385,023
	2	3.504-1-23.3 2200CB	AI 100,5,60	1	230,09	230,09
	3	3.504-1-23.3 0010	NH-72	1	19,47	19,47
	4	Tērouts S355,02	Pakrāts(sloksne 220x220x40)	2	13,7	27,4
	5	Tērouts S355,02	Uzgrāznis W7x6	2	2,69	5,38
13	Tērouts S355,02	Sloksne n=20	2	3,14	6,28	
						KOPĀ: 522,45
E-6 (1 gnb.)	9	3.504-1-23.3 1300CB	AI 69,60	1	165,04	165,04
	8	3.504-1-23.3 2200CB	AI 69,60	1	199,02	199,02
	12	3.504-1-23.3 1300CB	AI 56,60	1	139,52	139,52
	3	3.504-1-23.3 0010	NH-72	1	19,47	19,47
	6	3.504-1-23.3 0020	NH-72	1	8,67	8,67
4	Pakrāts(sloksne 220x220x40)	Uzgrāznis W7x6	2	13,7	27,4	
5	Uzgrāznis W7x6	2	2,69	5,38	5,38	
13	Sloksne n=20	2	3,14	6,28	6,28	
						KOPĀ: 570,78
E-7 (1 gnb.)	9	3.504-1-23.3 1300CB	AI 69,60	1	165,04	165,04
	8	3.504-1-23.3 2200CB	AI 69,60	1	199,02	199,02
	14	3.504-1-23.3 1300CB	AI 71,60	1	168,37	168,37
	3	3.504-1-23.3 0010	NH-72	1	19,47	19,47
	6	3.504-1-23.3 0020	NH-72	1	8,67	8,67
4	Pakrāts (sloksne 220x220x40)	Uzgrāznis W7x6	2	13,7	27,4	
5	Uzgrāznis W7x6	2	2,69	5,38	5,38	
13	Sloksne n=20	2	3,14	6,28	6,28	
						KOPĀ: 599,63
E-8 (1 gnb.)	15	3.504-1-23.3 1300CB	AI 15,5,60	1	45,21	45,21
	4	Pakrāts (sloksne 220x220x40)	Uzgrāznis W7x6	2	13,7	27,4
	5	Uzgrāznis W7x6	2	2,69	5,38	5,38
	13	Sloksne n=20	4	3,14	12,56	12,56

[illegible]